



Stanhope Primary School

Learning • Success • Respect • Citizenship



Principal: Christine Owen

Phone: 03 5857 2514

Mobile: 0419 548 318

Email: stanhope.ps@education.vic.gov.au

Newsletter

48 Midland Highway

PO Box 19

Stanhope, Victoria 3623

<http://stanhopeps.vic.edu.au>

Inspiring Lifelong Learning

ISSUE 31: October 17, 2024

REMINDERS & THINGS TO DO

DATES TO REMEMBER

CAFÉ LUNCH ORDERS

Families please note, that the Café have requested that **CORRECT MONEY BE PUT IN WITH LUNCH ORDERS**

Please ensure that students come to school each day with a:

- ◆ **DRINK BOTTLE**
- ◆ **SCHOOL HAT**



**YES
OUTDOOR
PLAY**



**NO
OUTDOOR
PLAY**

Friday 18 October

- ◆ Sporting Schools

Tuesday 22 October

- ◆ Blue Earth Sports

Wednesday 23 October

- ◆ CURRICULUM DAY
No students

Thursday 24 October

- ◆ LIBRARY

Friday 25 October

- ◆ Sporting Schools

Wednesday 30 October

- ◆ Visit to Kinder

Thursday 31 October

- ◆ ART

Friday 1 November

- ◆ Sporting Schools

PRINCIPAL'S MESSAGE: Fiona Wallace



Remembrance Day

I am very proud to say that this year we will be hosting the Stanhope Community Remembrance Day ceremony here at school this year on November 11. Students have today started preparing something they'd like to contribute. We have students preparing songs, performances, arts and crafts... I am asking the students to contribute in any way they'd like. Please ask your student about this and discuss the meaning of the day. We will be having time each Friday afternoon to rehearse/make our contributions.



Kyabram Show

The Kyabram Show is being held this weekend on Saturday October 19 and we have submitted artwork from all students. Thank you to Mrs Foley for collecting this work and submitting it for us. Please find below a link to the show schedule:

<https://www.vicagshows.com.au/kyabram-show>

Success

Simon's Wellbeing Wednesday lesson this week was centred around students' understanding of what 'success' is and what it means to them. Each week students will contribute pieces of work to our new 'wall of success' in the assembly room. We are focusing on acknowledging and celebrating our successes – be they big or small, noticeable or achieved quietly. One dictionary definition of 'success' is that it's the **accomplishment of an aim or purpose**. It follows then that we need to have an 'aim' or a 'purpose' if we're going to measure our level of success, hence our recent focus on creating goals for every student during their Student Support Group Meeting. These goals are important, and it's vital that students have ownership of them.

2025

An important part of my work this term is to plan for 2025. I would like to let you know that we're currently seeking to employ an additional full-time classroom teacher to join our team and we're very excited! The job is available on Recruitment Online. The very best way to attract teachers to our school is by word of mouth, so please help us to spread the word that we're currently seeking a teacher for next year and advise anyone who is interested to check online and/or phone me at school to arrange a tour and a chat. This new position will mean that we're able to plan for two classrooms to run in 2025 – a junior class and a senior class. I will keep you updated with all plans for 2025, so please stay tuned.

Facebook

Have you checked out our Facebook page recently? Please have a look, share it with your family and friends, and keep your eyes peeled for photos of your students. We are excited to share our news with the world and would love to grow our presence online. We have a great school here and we want everyone to know it!



FROM THE
**Business
Manager**

Mica will be in the office on
Tuesdays and Thursdays.

I am happy to discuss
confidential payment
options for fees or camps
& excursions with you.

Café Lunch Orders

**3rd Wednesday
of every month**

**20th November
18th December**

PRICE LIST ATTACHED

Weekly Wellbeing Award



**Congratulations to
DAISY**

**FOR BEING RESILIENT AND
OVERCOMING A CHALLENGE
from Wellbeing Officer Simon**

Stanhope Primary School ENROLMENTS

Enrolments are welcome
for our school.

Parents or carers can
contact the school to speak
with the principal,
Christine, or to collect an
enrolment pack.

School tours by
appointment.



- ◆ Small caring environment.
- ◆ Individual learning plans to ensure high student outcomes.
- ◆ Engaging curriculum delivery.
- ◆ Parent involvement encouraged.

97TH ANNUAL KYABRAM AGRICULTURAL SHOW



SATURDAY, 19TH OCTOBER 2024

Come along for an amazing day out for the family. Featuring local livestock shows, animal nursery, flower show, local craft displays, side shows and much more!

Show Office, Rear of Stadium
OFFICE HOURS - 9:30am-4pm

0-11 YEARS PARENT SUPPORT AND EDUCATION AND SESSIONS

The Loddon Children's Health & Wellbeing Local will be offering weekly education session related to mental health and wellbeing for parents of children 0-11. These are available both on line and in person.

Sessions are open to any family with children 0-11.

Why join in?

- Meet and mix with other parents.
- Talk to mental health staff about your child.
- Ask any practical questions you have about parenting at the moment.
- Gain support for yourself as a parent.

Where: Loddon Children's Health and Wellbeing Local
Bendigo Community Health Services
19 Helm St Kangaroo Flat

Dates and topics: Thursdays 9.30 am On Line session: 1pm Face to face at the local

Oct 3rd 9.30am on line and 1pm face to face Autism what is it and how do I help?

Oct 10th 9.30am on line and 1pm face to face Tech troubles

Oct 17th 9.30am on line and 1pm face to face Anxiety in kids

Oct 24th 9.30am on line and 1pm face to face Managing big feelings

Oct 31st 9.30am and 1pm ADHD What is it and how do I help?

Nov 14th 9.30am and 1pm Building social skills

Nov 21st 9.30am and 1pm Anger in kids

Nov 28th 9.30am and 1pm Setting limits and family rules

Dec 5th 9.30am on line and 1pm face to face Parent Wellbeing

If you have any questions, please contact Annette Clemments on 1800 433 977.

Book in here : using the QR code or email icfhlocals@bchs.com.au



Zoom link for 10am meeting

<https://us02web.zoom.us/j/84867976569> Meeting ID: 848 6797 6569

THE PARENT GROUP PROGRAM

The Parent Group Program offers parents the chance to meet with other parents and mental health staff about mental wellbeing and parenting challenges.

The program offers

- one to one consultation with the coordinator
- parent group information sessions
- school holiday parent and child sessions
- longer parenting programs

One of parent information sessions available are:

- What is autism and how can I help?
- What is ADHD and how can I help?
- Sleep issues
- Anxiety in kids
- All about Anger
- Managing Big Feelings
- Supporting self esteem
- Building social skills
- Parent Mental Health
- Sensory issues
- Stop the tech or Tech troubles in our family

Parent and child sessions available are:

- Magnificent me
- All about Anger
- Managing Feelings
- Anxiety busting
- Resilient children
- Building social skills

Longer programs include:

- Bringing Up Great Kids, * Tuning into Kids and * Circle of Security. (These programs are booked when requested, they are not run regularly in any location)

This program is offered across the Loddon region by Coordinator Annette Clemments Social Worker in collaboration with other staff.

All services are free to families.

Please contact the Loddon Children's Health and Wellbeing Local on 1800 433 977 to find out more.

Thank you to our generous sponsors

proPAVE
landscapes

Phil De'Ath
0418 527 365

Lina Ding
0412 266 635

KYABRAMS
MAIN STREET
BUTCHERY

"The Best Meat by Miles"

170 Allan St, Kyabram PH: 5853 2123



Kyabram CLUB
Where good friends meet



- Stanhope Supermarket
- Stanhope RSL Sub Branch

DISCLAIMER: The Department of Education & Training, and Stanhope Primary School do not endorse the products or services of any private advertiser. No responsibility is accepted by the Department or the School for the accuracy of information contained in advertisements.

PROTECT

Protecting children & young people
from abuse is our responsibility



HELP IS BUT A PHONE CALL AWAY

LIFELINE
13 11 14

KID'S HELPLINE
1800 55 1800

BEYOND BLUE
1300 22 4636

AWARDS



Success Award:

Bonnie.

Citizenship Award:

Learning Award:

Cass.

Respect Award:

<https://www.facebook.com/stanhopeps/>



Child safety and wellbeing at Stanhope Primary School

information for families and the school community

The Victorian Government has announced new [Child Safe Standards](#) to further strengthen child safety across organisations, including schools. The new standards recognise the critical importance of families and the broader school community in maintaining and promoting child safety and wellbeing.

Stanhope Primary School has reviewed and updated our child safety policies and procedures to ensure they meet the requirements of the new standards. These are available to view our school's website, via UeducateUs, and at the school's front office.

We are committed to continuous improvement in our approach to child safety and wellbeing and welcome feedback from families and members of our school community on ways we can further strengthen our child safety policies, procedures and practices.

If you have any suggestions, comments or questions, please contact Stanhope Primary School at stanhope.ps@education.vic.gov.au or by phone on 03 5857 2514.

Victoria's Child Safe Standards

- **Child Safe Standard 1** – Establish a culturally safe environment in which the diverse and unique identities and experiences of Aboriginal children and young people are respected and valued.
- **Child Safe Standard 2** – Ensure that child safety and wellbeing are embedded in school leadership, governance and culture.
- **Child Safe Standard 3** – Children and young people are empowered about their rights, participate in decisions affecting them and are taken seriously.
- **Child Safe Standard 4** – Families and communities are informed and involved in promoting child safety and wellbeing.
- **Child Safe Standard 5** – Equity is upheld and diverse needs are respected in policy and practice.
- **Child Safe Standard 6** – People working with children and young people are suitable and supported to reflect child safety and wellbeing values in practice.
- **Child Safe Standard 7** – Ensure that processes for complaints and concerns are child focused.
- **Child Safe Standard 8** – Staff and volunteers are equipped with the knowledge, skills and awareness to keep children and young people safe through ongoing education and training.
- **Child Safe Standard 9** – Physical and online environments promote safety and wellbeing while minimising the opportunity for children and young people to be harmed.
- **Child Safe Standard 10** – Implementation of the Child Safe Standards is regularly reviewed and improved.
- **Child Safe Standard 11** – Policies and procedures that document how schools are safe for children, young people and students.
- Ministerial Order 1359 provides the framework for child safety in schools.

FOUR CRITICAL ACTIONS FOR SCHOOLS

Responding to Incidents, Disclosures and Suspicions of Child Abuse

1 RESPONDING TO AN EMERGENCY

If there is no risk of immediate harm go to **Action 2**

If a child is at immediate risk of harm you **must** ensure their safety by:

- separating alleged victims and others involved
- administering first aid
- calling **000** for urgent medical and/or police assistance to respond to immediate health or safety concerns
- identifying a contact person at the school for future liaison with Police.

Where necessary you may also need to maintain the integrity of the potential crime scene and preserve evidence.

2 REPORTING TO AUTHORITIES / REFERRING TO SERVICES

As soon as immediate health and safety concerns are addressed you **must** report all incidents, suspicions and disclosures of child abuse as soon as possible. Failure to report physical and sexual child abuse may amount to a criminal offence.

Q: Where does the source of suspected abuse come from?

WITHIN THE SCHOOL

VICTORIA POLICE
You **must** report all instances of suspected child abuse involving a school staff member, contractor, volunteer or visitor to Victoria Police.

You **must also** report internally to:

- GOVERNMENT SCHOOLS**
 - School principal and/or leadership team
 - Employee Conduct Branch
 - DET Incident Support and Operations Centre.
- CATHOLIC SCHOOLS**
 - School principal and/or leadership team
 - Diocesan education office.
- INDEPENDENT SCHOOLS**
 - School principal and/or school chairperson
 - Commission for Children and Young People on **1300 782 978**

All allegations of 'reportable conduct' **must** be reported as soon as possible to:

- GOVERNMENT SCHOOLS**
 - Employee Conduct Branch
- CATHOLIC SCHOOLS**
 - Diocesan education office
- INDEPENDENT SCHOOLS**
 - Commission for Children and Young People on **1300 782 978**.

OTHER CONCERNS

If you believe that a child is not subject to abuse, but you still hold **significant concerns** for their wellbeing you **must** still act. This may include making a referral or seeking advice from:

- Child FIRST/The Orange Door (in circumstances where the family are open to receiving support)
- DHHS Child Protection
- Victoria Police.

3 CONTACTING PARENTS/CARERS

Your principal **must** consult with DHHS Child Protection or Victoria Police to determine what information can be shared with parents/carers. They may advise:

- not to contact** the parents/carer (e.g. in circumstances where the parents are alleged to have engaged in the abuse, or the child is a mature minor and does not wish for their parent/carer to be contacted)
- to contact** the parents/carers and provide agreed information (this must be done as soon as possible, preferably on the same day of the incident, disclosure or suspicion)
- how to communicate** with all relevant parties with consideration for their safety.

4 PROVIDING ONGOING SUPPORT

Your school **must** provide support for children impacted by abuse. This should include the development of a **Student Support Plan** in consultation with wellbeing professionals. This is an essential part of your duty of care requirements.

Strategies may include development of a safety plan, direct support and referral to wellbeing professionals and support.

You **must** follow the **Four Critical Actions** every time you become aware of a further instance or risk of abuse. This includes reporting new information to authorities.

YOU MUST TAKE ACTION

You **must** act, by following the Four Critical Actions, as soon as you witness an incident, receive a disclosure or form a reasonable belief* that a child has, or is at risk of being abused.

As a school staff member, you play a **critical role** in protecting children in your care.

You **must** act if you form a suspicion or reasonable belief, even if you are unsure and have not directly observed child abuse (e.g. if the victim or another person tells you about the abuse).

*A reasonable belief is a deliberately low threshold. This enables authorities to investigate and take action.

CONTACT

DHHS CHILD PROTECTION

AREA
North Division **1300 664 977**
South Division **1300 655 795**
East Division **1300 300 391**
West Division (Rural) **1800 075 599**
West Division (Metro) **1300 664 977**

AFTER HOURS
After hours, weekends, public holidays **13 12 78**

CHILD FIRST
<https://services.dhhs.vic.gov.au/federal-and-support-teams>

ORANGE DOOR
<https://www.vic.gov.au/familyviolence/the-orange-door.html>

VICTORIA POLICE

000 or your local police station

DET INCIDENT SUPPORT AND OPERATIONS CENTRE
1800 126 126

INCIDENT MANAGEMENT AND SUPPORT UNIT
1800 126 126

EMPLOYEE CONDUCT BRANCH
(03) 9637 2595

DIOCESAN OFFICE
Melbourne **(03) 9267 0228**
Ballarat **(03) 5337 7135**
Sale **(03) 5622 8600**
Sandhurst **(03) 5443 2377**

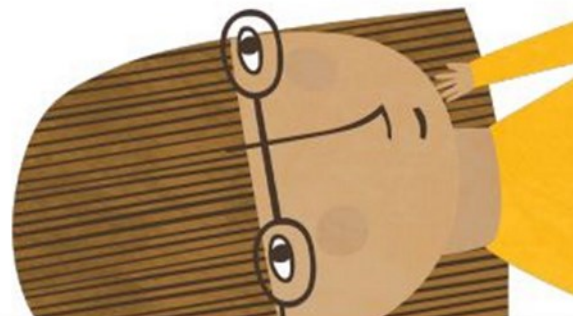
INDEPENDENT SCHOOLS

VICTORIA
(03) 9825 7200

THE LOOKOUT

The LOOKOUT has a service directory, information, and evidence based guidance to help you respond to family violence: <http://www.lookout.org.au>

Family violence victims/survivors can be referred to **1800 Respect** for counselling, information and a referral service: **1800 737 732**



PROTECT

THE EDUCATION STATE

VICTORIA
Education and Training

CECV
CHILD EDUCATION COMMUNITY CONNECTIONS OF VICTORIA





FISH 'N' CHIPS

Minimum chips	\$ 4.00
Battered sav	\$ 3.50
Boneless wing ding	\$ 1.50
Calamari rings	\$ 1.80
Chicken dim sim	\$ 2.50
Chicken nugget	\$ 0.80
Chiko roll	\$ 3.50
Chilli chicken strip	\$ 2.00
Corn jack	\$ 3.50
Crab sticks	\$ 1.80
Crumbed prawns	\$ 1.80
Dim sim	\$ 1.50
Fish bites	\$ 1.80
Fish cakes	\$ 3.00

FISH

FLAKE	\$ 8.50
BLUE GRENADIER	\$ 9.00
Flat head fillets	\$ 2.50
Garlic chicken ball	\$ 1.80
Hash brown	\$ 1.20
Magdala	\$ 4.00
Mini dim sim	\$ 0.75
Mini spring roll	\$ 2.00
Pineapple fritter	\$ 3.00
Pluto pup	\$ 3.50
Potato cake	\$ 1.50
Scallops	\$ 1.80
South Melbourne dim sim	\$ 2.50
Spring roll	\$ 3.50
Wing ding	\$ 2.50

CHIPS, CHEESE & GRAVY

SMALL	\$ 7.00
MEDIUM	\$ 10.00
LARGE	\$ 13.00
Tomato sauce sachet	\$ 0.30

LOADED FRIES

SMALL	\$ 9.00
LARGE	\$ 14.00

BURGERS

Bacon & Egg Roll	\$ 8.00
Bacon & Egg Sandwich	\$ 7.50
Chicken parma roll	\$ 13.00
Chicken schnitzel & gravy roll	\$ 9.00
Chicken schnitzel & salad roll	\$ 8.50
Chicken schnitzel with the lot	\$ 15.00
Chicken wrap with the LOT	\$ 13.00
PLAIN	\$ 11.00
Fish burger with the LOT	\$ 15.00
PLAIN	\$ 12.00
Hamburger with the LOT	\$ 13.00
PLAIN	\$ 11.00
Souvlaki- beef/lamb/chicken	
LOT	\$ 13.00
PLAIN	\$ 11.00
Steak sandwich with the LOT	\$ 12.00
PLAIN	\$ 10.00

Sauces- tomato, bbq, mayo, garlic, sweet chilli, hot chilli, tartare

EXTRAS

Gravy on chips	\$ 2.00
Meat	\$ 4.00
Bacon or Egg	\$ 2.00
Cheese or Pineapple	\$ 1.00
Squeezy sauce - per sachet	\$ 0.30
Small salad	\$ 6.00
Large salad	\$ 7.00

BAKERY

Plain pie	\$ 5.50
Flavoured pie	\$ 5.90
Sausage Roll	\$ 4.80
Pastie	\$ 4.80
Salad only rolls	\$ 6.50
Meat and salad rolls	\$ 8.00
Salad only sandwich	\$ 6.00
Meat and salad sandwich	\$ 7.50
Salad wraps	\$ 8.00

**PLEASE PUT CORRECT MONEY
WITH LUNCH ORDERS**