



Stanhope Primary School

Learning • Success • Respect • Citizenship



Principal: Christine Owen

Phone: 03 5857 2514

Mobile: 0419 548 318

Email: stanhope.ps@education.vic.gov.au

Newsletter

48 Midland Highway

PO Box 19

Stanhope, Victoria 3623

<http://stanhopeps.vic.edu.au>

Inspiring Lifelong Learning

ISSUE 30: October 10th 2024

REMINDERS & THINGS TO DO

DATES TO REMEMBER

Excursion

TERM 4

Last Wednesday we visited the Stanhope Community Garden with Danae from Ky- Abram and District Health.

We picked our own vegetables, made our own salads, and then ate them!

We learned about growing food, preparing food, and how to volunteer. We look forward to our next visit when we will plant some seeds.

Wednesday 16th October

- ◆ Cafe Lunch Orders
- ◆ Visit from Kinder
- ◆ School Council 7pm

Wednesday 23rd October

- ◆ CURRICULUM DAY
- Blue students

Wednesday 30th October

- ◆ Visit to Kinder



Please ensure that students come



YES



NO

PRINCIPAL'S MESSAGE: Fiona Wallace



Welcome to Term 4

I wish to extend a very warm *WELCOME BACK* to school for Term 4. This term is going to be busy, fast-paced, and loads of fun! I am very much looking forward to enjoying this final term of the year with you all.

Artwork

The Kyabram Show is being held on October 19 and we are going to showcase the artwork of our talented students. Mrs Foley collected quite a number that we will enter. Please find here a link to the show schedule: <https://www.vicagshows.com.au/kyabram-show>

SUCCESS

This term we are going to focus on our school value of SUCCESS for the first five weeks. Simon's lessons will be centred around this theme each Wednesday afternoon, and all of our teachers will be incorporating and discussing this theme as part of general class work. We will have our 'wall of success' decorated behind our assembly 'stage' to add on to each week.

Student News

As you move through the main corridor you will notice a few changes to our pinboards. One of these changes is the addition of our 'Student News' board. We will feature news/photos from students who wish to share. Please email any stories/photos to Fiona.Wallace@education.vic.gov.au and I will feature the news on that board throughout the term. We are very proud of our students' accomplishments and very interested in their news, so please share those stories with us as often as you like.

Student Support Group Meetings

You will have been contacted this week by our Inclusion Leader Deb Dodd. Deb is helping to organise meetings to be held in these first two weeks of term with you and your child. The purpose of these meetings is to set goals for term 4 and to look at the individual needs of each child so that we can make appropriate plans. These meetings will take about 30 minutes and will help us to all be on the same page when it comes to what each student is striving to achieve next term. I would love to see students knowing what their own goals are and for them to be involved in measuring their own successes. If you have any questions about these meetings, please don't hesitate to contact either myself or Deb.

Facebook

Please check out our Facebook page, share it with your friends and family, and keep your eyes peeled for photos of your student excelling and enjoying their school! :)

<https://www.facebook.com/stanhopeps/>



FROM THE
*Business
Manager*

Mica will be in the office on
Tuesdays and Thursdays.

I am happy to discuss
confidential payment
options for fees or camps
& excursions with you.

Café Lunch Orders

**3rd Wednesday
of every month**

**16th October
20th November
18th December**

PRICE LIST ATTACHED

97TH ANNUAL KYABRAM AGRICULTURAL SHOW



SATURDAY, 19TH OCTOBER 2024

Come along for an amazing day out for the family. Featuring local livestock shows, animal nursery, flower show, local craft displays, side shows and much more!

Show Office, Rear of Stadium
OFFICE HOURS - 9:30am-4pm

Thank you to our generous sponsors

proPAVE
landscapes

Phil De'Ath
0418 527 365

Lina Ding
0412 266 635

KYABRAMS
MAIN STREET
BUTCHERY

"The Best Meat by Miles"

170 Allan St, Kyabram PH: 5853 2123



Kyabram CLUB
Where good friends meet



- Stanhope Supermarket
- Stanhope RSL Sub Branch

DISCLAIMER: The Department of Education & Training, and Stanhope Primary School do not endorse the products or services of any private advertiser. No responsibility is accepted by the Department or the School for the accuracy of information contained in advertisements.

PROTECT

Protecting children & young people
from abuse is our responsibility



HELP IS BUT A PHONE CALL AWAY

LIFELINE
13 11 14

KID'S HELPLINE
1800 55 1800

BEYOND BLUE
1300 22 4636

AWARDS



Success Award:

Citizenship Award:

Mercedes

Learning Award:

Respect Award:

Cass

Child safety and wellbeing at Stanhope Primary School

information for families and the school community

The Victorian Government has announced new [Child Safe Standards](#) to further strengthen child safety across organisations, including schools. The new standards recognise the critical importance of families and the broader school community in maintaining and promoting child safety and wellbeing.

Stanhope Primary School has reviewed and updated our child safety policies and procedures to ensure they meet the requirements of the new standards. These are available to view our school's website, via UeducateUs, and at the school's front office.

We are committed to continuous improvement in our approach to child safety and wellbeing and welcome feedback from families and members of our school community on ways we can further strengthen our child safety policies, procedures and practices.

If you have any suggestions, comments or questions, please contact Stanhope Primary School at stanhope.ps@education.vic.gov.au or by phone on 03 5857 2514.

Victoria's Child Safe Standards

- **Child Safe Standard 1** – Establish a culturally safe environment in which the diverse and unique identities and experiences of Aboriginal children and young people are respected and valued.
- **Child Safe Standard 2** – Ensure that child safety and wellbeing are embedded in school leadership, governance and culture.
- **Child Safe Standard 3** – Children and young people are empowered about their rights, participate in decisions affecting them and are taken seriously.
- **Child Safe Standard 4** – Families and communities are informed and involved in promoting child safety and wellbeing.
- **Child Safe Standard 5** – Equity is upheld and diverse needs are respected in policy and practice.
- **Child Safe Standard 6** – People working with children and young people are suitable and supported to reflect child safety and wellbeing values in practice.
- **Child Safe Standard 7** – Ensure that processes for complaints and concerns are child focused.
- **Child Safe Standard 8** – Staff and volunteers are equipped with the knowledge, skills and awareness to keep children and young people safe through ongoing education and training.
- **Child Safe Standard 9** – Physical and online environments promote safety and wellbeing while minimising the opportunity for children and young people to be harmed.
- **Child Safe Standard 10** – Implementation of the Child Safe Standards is regularly reviewed and improved.
- **Child Safe Standard 11** – Policies and procedures that document how schools are safe for children, young people and students.
- Ministerial Order 1359 provides the framework for child safety in schools.

FOUR CRITICAL ACTIONS FOR SCHOOLS

Responding to Incidents, Disclosures and Suspicions of Child Abuse

1 RESPONDING TO AN EMERGENCY

If there is no risk of immediate harm go to **Action 2**

If a child is at immediate risk of harm you **must** ensure their safety by:

- separating alleged victims and others involved
- administering first aid
- calling **000** for urgent medical and/or police assistance to respond to immediate health or safety concerns
- identifying a contact person at the school for future liaison with Police.

Where necessary you may also need to maintain the integrity of the potential crime scene and preserve evidence.

2 REPORTING TO AUTHORITIES / REFERRING TO SERVICES

As soon as immediate health and safety concerns are addressed you **must** report all incidents, suspicions and disclosures of child abuse as soon as possible. Failure to report physical and sexual child abuse may amount to a criminal offence.

Q: Where does the source of suspected abuse come from?

WITHIN THE SCHOOL

VICTORIA POLICE
You **must** report all instances of suspected child abuse involving a school staff member, contractor, volunteer or visitor to Victoria Police.

You **must also** report internally to:

- GOVERNMENT SCHOOLS**
 - School principal and/or leadership team
 - Employee Conduct Branch
 - DET Incident Support and Operations Centre.
- CATHOLIC SCHOOLS**
 - School principal and/or leadership team
 - Diocesan education office.
- INDEPENDENT SCHOOLS**
 - School principal and/or school chairperson
 - Commission for Children and Young People on **1300 782 978**

All allegations of 'reportable conduct' **must** be reported as soon as possible to:

- GOVERNMENT SCHOOLS**
 - Employee Conduct Branch
- CATHOLIC SCHOOLS**
 - Diocesan education office
- INDEPENDENT SCHOOLS**
 - Commission for Children and Young People on **1300 782 978**.

OTHER CONCERNS

If you believe that a child is not subject to abuse, but you still hold **significant concerns** for their wellbeing you **must** still act. This may include making a referral or seeking advice from:

- Child FIRST/The Orange Door (in circumstances where the family are open to receiving support)
- DHHS Child Protection
- Victoria Police.

3 CONTACTING PARENTS/CARERS

Your principal **must** consult with DHHS Child Protection or Victoria Police to determine what information can be shared with parents/carers. They may advise:

- not to contact** the parents/carer (e.g. in circumstances where the parents are alleged to have engaged in the abuse, or the child is a mature minor and does not wish for their parent/carer to be contacted)
- to contact** the parents/carers and provide agreed information (this must be done as soon as possible, preferably on the same day of the incident, disclosure or suspicion)
- how to communicate** with all relevant parties with consideration for their safety.

4 PROVIDING ONGOING SUPPORT

Your school **must** provide support for children impacted by abuse. This should include the development of a **Student Support Plan** in consultation with wellbeing professionals. This is an essential part of your duty of care requirements.

Strategies may include development of a safety plan, direct support and referral to wellbeing professionals and support.

You **must** follow the **Four Critical Actions** every time you become aware of a further instance or risk of abuse. This includes reporting new information to authorities.

YOU MUST TAKE ACTION

You **must** act, by following the Four Critical Actions, as soon as you witness an incident, receive a disclosure or form a reasonable belief* that a child has, or is at risk of being abused.

As a school staff member, you play a **critical role** in protecting children in your care.

You **must** act if you form a suspicion or reasonable belief, even if you are unsure and have not directly observed child abuse (e.g. if the victim or another person tells you about the abuse).

*A reasonable belief is a deliberately low threshold. This enables authorities to investigate and take action.

CONTACT

DHHS CHILD PROTECTION

AREA
North Division **1300 664 977**
South Division **1300 655 795**
East Division **1300 300 391**
West Division (Rural) **1800 075 599**
West Division (Metro) **1300 664 977**

AFTER HOURS

After hours, weekends, public holidays **13 12 78**

CHILD FIRST

<https://services.dhhs.vic.gov.au/federal-and-support-teams>

ORANGE DOOR

<https://www.vic.gov.au/familyviolence/the-orange-door.html>

VICTORIA POLICE

000 or your local police station

DET INCIDENT SUPPORT AND OPERATIONS CENTRE

1800 126 126

INCIDENT MANAGEMENT AND SUPPORT UNIT

1800 126 126

EMPLOYEE CONDUCT BRANCH

(03) 9637 2595

DIOCESAN OFFICE

Melbourne **(03) 9267 0228**
Ballarat **(03) 5337 7135**
Sale **(03) 5622 8600**
Sandhurst **(03) 5443 2377**

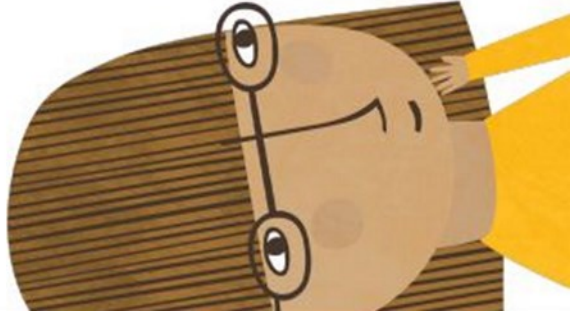
INDEPENDENT SCHOOLS

VICTORIA (03) 9825 7200

THE LOOKOUT

The LOOKOUT has a service directory, information, and evidence based guidance to help you respond to family violence: <http://www.lookout.org.au>

Family violence victims/survivors can be referred to **1800 Respect** for counselling, information and a referral service: **1800 737 732**



PROTECT

THE EDUCATION STATE

VICTORIA Education and Training

CECV

Department of Education and Training



FISH 'N' CHIPS

Minimum chips	\$ 4.00
Battered sav	\$ 3.50
Boneless wing ding	\$ 1.50
Calamari rings	\$ 1.80
Chicken dim sim	\$ 2.50
Chicken nugget	\$ 0.80
Chiko roll	\$ 3.50
Chilli chicken strip	\$ 2.00
Corn jack	\$ 3.50
Crab sticks	\$ 1.80
Crumbed prawns	\$ 1.80
Dim sim	\$ 1.50
Fish bites	\$ 1.80
Fish cakes	\$ 3.00

FISH

FLAKE	\$ 8.50
BLUE GRENADIER	\$ 9.00
Flat head fillets	\$ 2.50
Garlic chicken ball	\$ 1.80
Hash brown	\$ 1.20
Magdala	\$ 4.00
Mini dim sim	\$ 0.75
Mini spring roll	\$ 2.00
Pineapple fritter	\$ 3.00
Pluto pup	\$ 3.50
Potato cake	\$ 1.50
Scallops	\$ 1.80
South Melbourne dim sim	\$ 2.50
Spring roll	\$ 3.50
Wing ding	\$ 2.50

CHIPS, CHEESE & GRAVY

SMALL	\$ 7.00
MEDIUM	\$ 10.00
LARGE	\$ 13.00

Tomato sauce sachet \$ ***0.30***

LOADED FRIES

SMALL	\$ 9.00
LARGE	\$ 14.00

BURGERS

Bacon & Egg Roll	\$ 8.00
Bacon & Egg Sandwich	\$ 7.50
Chicken parma roll	\$ 13.00
Chicken schnitzel & gravy roll	\$ 9.00
Chicken schnitzel & salad roll	\$ 8.50
Chicken schnitzel with the lot	\$ 15.00
Chicken wrap with the LOT	\$ 13.00
PLAIN	\$ 11.00
Fish burger with the LOT	\$ 15.00
PLAIN	\$ 12.00
Hamburger with the LOT	\$ 13.00
PLAIN	\$ 11.00
Souvlaki- beef/lamb/chicken	
LOT	\$ 13.00
PLAIN	\$ 11.00
Steak sandwich with the LOT	\$ 12.00
PLAIN	\$ 10.00

Sauces- tomato, bbq, mayo, garlic, sweet chilli, hot chilli, tartare

EXTRAS

Gravy on chips	\$ 2.00
Meat	\$ 4.00
Bacon or Egg	\$ 2.00
Cheese or Pineapple	\$ 1.00
Squeezy sauce - per sachet	\$ 0.30
Small salad	\$ 6.00
Large salad	\$ 7.00

BAKERY

Plain pie	\$ 5.50
Flavoured pie	\$ 5.90
Sausage Roll	\$ 4.80
Pastie	\$ 4.80
Salad only rolls	\$ 6.50
Meat and salad rolls	\$ 8.00
Salad only sandwich	\$ 6.00
Meat and salad sandwich	\$ 7.50
Salad wraps	\$ 8.00