



Stanhope Primary School

Learning • Success • Respect • Citizenship



Principal: Christine Owen

Phone: 03 5857 2514

Mobile: 0419 548 318

Email: stanhope.ps@education.vic.gov.au

Newsletter

48 Midland Highway

PO Box 19

Stanhope, Victoria 3623

<http://stanhopeps.vic.edu.au>

Inspiring Lifelong Learning

ISSUE 26: August 29th 2024

REMINDERS & THINGS TO DO

DATES TO REMEMBER

INSIDE THE NEWSLETTER

- ◆ Information on accessing the School Saving Bonus
- ◆ Information on our School's Emergency Management Plan

URGENT REMINDER

Father's Day stall
Friday morning (tomorrow)
30th August
\$5 limit/student

Friday 30th August

- ◆ FATHER'S DAY STALL
- ◆ ART
- ◆ Sporting Schools

Thursday 5th September

- ◆ ART

Friday 6th September

- ◆ Sporting Schools

Thursday 12th September

- ◆ LIBRARY

Friday 13th September

- ◆ Sporting Schools

Monday 16th September

- ◆ Blue Earth Sports

Thursday 19th September

- ◆ ART

Friday 20th September

- ◆ END OF TERM
Early Dismissal 2pm

PRINCIPAL'S MESSAGE: Fiona Wallace



I'm back!

Hello! I am very excited to be back!

I would like to thank Mr Graeme Hodgens for his time as Acting Principal and to also thank him for continuing to work here with us on Tuesdays for the remainder of this term. In his own words, he's staying on with us as he's now feeling very much a part of our community and isn't yet ready to say goodbye to our wonderful students.

I would also like to thank all the students and families for giving me a very big, warm welcome. I am excited and full of energy – ready to serve you and our wider school community. As I mentioned earlier in the year, my door is always open.

School Saving Bonus

Please have a read of the information in this week's newsletter about the bonus money that the government is making available to you for help in purchasing school items, including uniform. I will send more information out to you about this as it comes to hand. The bonus will be in the form of vouchers that you will be able to collect from the school later this year. Stay tuned.

Reading

What are you reading at the moment? I am reading an Australian novel called The Godmothers by Monica McInerney. So far, it's had sad moments and very funny moments, and is an 'easy read'. I have been delighted to see the progress our students have made in their own reading since Term 1 and have been excited to discuss their current books with them.

RESPECT

For the remainder of Term 3, we are going to focus on RESPECT. In class with Simon every Wednesday, students will explore what respect means, what it looks like, how we show it, and how to use it. This work began yesterday with a great lesson about the meaning of respect.



Simon and Megan worked with the students to focus on how to 'line up' respectfully. Each week we will be introducing another expectation linked to showing respect and I encourage you to discuss this with your student. We often think of respect in terms of speaking politely and waiting our turn etc – which are very important – but sometimes we forget that respect can also be looking after our equipment, sportsmanship, and most importantly having respect for ourselves.



FROM THE
**Business
Manager**

Mica will be in the office on
Tuesdays and Thursdays.

I am happy to discuss
confidential payment
options for fees or camps
& excursions with you.

Café Lunch Orders

**3rd Wednesday
of every month**

**18th September
16th October
20th November
18th December**

**NEW PRICE LIST
ATTACHED
TO THIS
NEWSLETTER**



Book Week



Weekly Wellbeing Award



Congratulations to LILY

for consistently demonstrating kindness and respect. Her classmates are drawn to her, showcasing her remarkable ability to create a welcoming environment. This is Lily's third award, testament to her outstanding character.

from Wellbeing

Stanhope Primary School ENROLMENTS

**Enrolments are welcome
for our school.**

Parents or carers can contact the school to speak with the principal, Christine, or to collect an enrolment pack.

School tours by appointment.



- ◆ Small caring environment.
- ◆ Individual learning plans to ensure high student outcomes.
- ◆ Engaging curriculum delivery.
- ◆ Parent involvement encouraged.

School Saving Bonus

Information for government school parents and carers

About the School Saving Bonus

The Victorian Government is making life that little bit easier for families by providing a one-off \$400 School Saving Bonus.

This support will help cover the cost of school uniforms, textbooks, and school activities like camps, excursions and sports.

The School Saving Bonus is in addition to existing and continuing means-tested supports for Camps, Sports and Excursions Fund (CSEF) and the Affordable School Uniforms Program.

The School Saving Bonus will be provided to schools and families in Term 4, 2024.

Who receives the School Saving Bonus

The School Saving Bonus is available for parents and carers of all Victorian government school students from Prep to Year 12 in 2025, except for full-fee international students, home schooled students, TAFE students and students attending kindergarten in 2025.

Actions for parents and carers

Parents and carers of children who meet the School Saving Bonus eligibility above are required to do the following by **Friday 18 October 2024**:

- **Complete enrolment**

If your child, or children are changing government school for Term 1 2025, or starting Prep or Year 7 in 2025, please complete enrolment. For more information, read about [Enrolling in School](#).

- **Check your contact information**

Ensure your contact information is up to date with your school. You can check this information by contacting your school directly.

Accessing the \$400 School Saving Bonus

You do not need to apply for the School Saving Bonus.

The Department of Education will email you in November 2024 with your \$400 School Saving Bonus. You will be able to access it via an online system.

You can decide how to best use the School Saving Bonus for your family's needs. You can choose how to allocate the \$400 in the online system.

The bonus can be used towards 2025 school costs, which may include:

- camps, trips, excursions and incursions
- swimming and sporting programs
- outdoor education programs
- graduations
- school uniforms
- textbooks.

The bonus can be used at your school's approved textbook or uniform suppliers either in-store or online, or through State Schools' Relief. The list of suppliers may include a school uniform or bookshop. Any amount that you choose to allocate to textbooks and uniforms will be valid until 30 June 2025. It will then transfer to your child's school account for future activities.

Funds will roll over for use in future years if it is not all spent in 2025.

Families with more than one eligible child

Families who have more than one child at the same school can combine their School Saving Bonus payments to use on one child, or for a specific activity. So, for example, a family with 3 children who are all government school students would receive support to the value of \$1,200 and choose how they spend those funds. The School Saving Bonus cannot be combined across different schools.

More information

To learn more about the School Saving Bonus visit vic.gov.au/school-saving-bonus. Translated information will also be available on the School Saving Bonus website in the next few weeks.

Thank you to our generous sponsors

proPAVE
landscapes

Phil De'Ath
0418 527 365

Lina Ding
0412 266 635

KYABRAMS
MAIN STREET
BUTCHERY

"The Best Meat by Miles"

170 Allan St, Kyabram PH: 5853 2123



Kyabram CLUB
Where good friends meet



- Stanhope Supermarket
- Stanhope RSL Sub Branch

DISCLAIMER: The Department of Education & Training, and Stanhope Primary School do not endorse the products or services of any private advertiser. No responsibility is accepted by the Department or the School for the accuracy of information contained in advertisements.

PROTECT

Protecting children & young people
from abuse is our responsibility



HELP IS BUT A PHONE CALL AWAY

LIFELINE
13 11 14

KID'S HELPLINE
1800 55 1800

BEYOND BLUE
1300 22 4636

AWARDS



High Jump Hero Award:
Lily & Bonni.

Good Citizenship Award:
Xyla, Spencer, Diamond-Rose,
Cooper, Daisy, Alexis & Mercedes.

Encouragement Award:
Spencer & Cooper.

<https://www.facebook.com/stanhopeps/>



Child safety and wellbeing at Stanhope Primary School

information for families and the school community

The Victorian Government has announced new [Child Safe Standards](#) to further strengthen child safety across organisations, including schools. The new standards recognise the critical importance of families and the broader school community in maintaining and promoting child safety and wellbeing.

Stanhope Primary School has reviewed and updated our child safety policies and procedures to ensure they meet the requirements of the new standards. These are available to view our school's website, via UeducateUs, and at the school's front office.

We are committed to continuous improvement in our approach to child safety and wellbeing and welcome feedback from families and members of our school community on ways we can further strengthen our child safety policies, procedures and practices.

If you have any suggestions, comments or questions, please contact Stanhope Primary School at stanhope.ps@education.vic.gov.au or by phone on 03 5857 2514.

Victoria's Child Safe Standards

- **Child Safe Standard 1** – Establish a culturally safe environment in which the diverse and unique identities and experiences of Aboriginal children and young people are respected and valued.
- **Child Safe Standard 2** – Ensure that child safety and wellbeing are embedded in school leadership, governance and culture.
- **Child Safe Standard 3** – Children and young people are empowered about their rights, participate in decisions affecting them and are taken seriously.
- **Child Safe Standard 4** – Families and communities are informed and involved in promoting child safety and wellbeing.
- **Child Safe Standard 5** – Equity is upheld and diverse needs are respected in policy and practice.
- **Child Safe Standard 6** – People working with children and young people are suitable and supported to reflect child safety and wellbeing values in practice.
- **Child Safe Standard 7** – Ensure that processes for complaints and concerns are child focused.
- **Child Safe Standard 8** – Staff and volunteers are equipped with the knowledge, skills and awareness to keep children and young people safe through ongoing education and training.
- **Child Safe Standard 9** – Physical and online environments promote safety and wellbeing while minimising the opportunity for children and young people to be harmed.
- **Child Safe Standard 10** – Implementation of the Child Safe Standards is regularly reviewed and improved.
- **Child Safe Standard 11** – Policies and procedures that document how schools are safe for children, young people and students.
- Ministerial Order 1359 provides the framework for child safety in schools.

FOUR CRITICAL ACTIONS FOR SCHOOLS

Responding to Incidents, Disclosures and Suspicions of Child Abuse

1 RESPONDING TO AN EMERGENCY

If there is no risk of immediate harm go to **Action 2**

If a child is at immediate risk of harm you **must** ensure their safety by:

- separating alleged victims and others involved
- administering first aid
- calling **000** for urgent medical and/or police assistance to respond to immediate health or safety concerns
- identifying a contact person at the school for future liaison with Police.

Where necessary you may also need to maintain the integrity of the potential crime scene and preserve evidence.

2 REPORTING TO AUTHORITIES / REFERRING TO SERVICES

As soon as immediate health and safety concerns are addressed you **must** report all incidents, suspicions and disclosures of child abuse as soon as possible. Failure to report physical and sexual child abuse may amount to a criminal offence.

Q: Where does the source of suspected abuse come from?

WITHIN THE SCHOOL

VICTORIA POLICE
You **must** report all instances of suspected child abuse involving a school staff member, contractor, volunteer or visitor to Victoria Police.

You **must also** report internally to:

- GOVERNMENT SCHOOLS**
 - School principal and/or leadership team
 - Employee Conduct Branch
 - DET Incident Support and Operations Centre.
- CATHOLIC SCHOOLS**
 - School principal and/or leadership team
 - Diocesan education office.
- INDEPENDENT SCHOOLS**
 - School principal and/or school chairperson
 - Commission for Children and Young People on **1300 782 978**

All allegations of 'reportable conduct' **must** be reported as soon as possible to:

- GOVERNMENT SCHOOLS**
 - Employee Conduct Branch
- CATHOLIC SCHOOLS**
 - Diocesan education office
- INDEPENDENT SCHOOLS**
 - Commission for Children and Young People on **1300 782 978**.

OTHER CONCERNS

If you believe that a child is not subject to abuse, but you still hold **significant concerns** for their wellbeing you **must** still act. This may include making a referral or seeking advice from:

- Child FIRST/The Orange Door (in circumstances where the family are open to receiving support)
- DHHS Child Protection
- Victoria Police.

3 CONTACTING PARENTS/CARERS

Your principal **must** consult with DHHS Child Protection or Victoria Police to determine what information can be shared with parents/carers. They may advise:

- not to contact** the parents/carer (e.g. in circumstances where the parents are alleged to have engaged in the abuse, or the child is a mature minor and does not wish for their parent/carer to be contacted)
- to contact** the parents/carers and provide agreed information (this must be done as soon as possible, preferably on the same day of the incident, disclosure or suspicion)
- how to communicate** with all relevant parties with consideration for their safety.

4 PROVIDING ONGOING SUPPORT

Your school **must** provide support for children impacted by abuse. This should include the development of a **Student Support Plan** in consultation with wellbeing professionals. This is an essential part of your duty of care requirements.

Strategies may include development of a safety plan, direct support and referral to wellbeing professionals and support.

You **must** follow the **Four Critical Actions** every time you become aware of a further instance or risk of abuse. This includes reporting new information to authorities.

YOU MUST TAKE ACTION

You **must** act, by following the Four Critical Actions, as soon as you witness an incident, receive a disclosure or form a reasonable belief* that a child has, or is at risk of being abused.

As a school staff member, you play a **critical role** in protecting children in your care.

You **must** act if you form a suspicion or reasonable belief, even if you are unsure and have not directly observed child abuse (e.g. if the victim or another person tells you about the abuse).

*A reasonable belief is a deliberately low threshold. This enables authorities to investigate and take action.

CONTACT

DHHS CHILD PROTECTION

AREA
North Division **1300 664 977**
South Division **1300 655 795**
East Division **1300 300 391**
West Division (Rural) **1800 075 599**
West Division (Metro) **1300 664 977**

AFTER HOURS

After hours, weekends, public holidays **13 12 78**

CHILD FIRST

<https://services.dhhs.vic.gov.au/federal-and-support-teams>

ORANGE DOOR

<https://www.vic.gov.au/familyviolence/the-orange-door.html>

VICTORIA POLICE

000 or your local police station

DET INCIDENT SUPPORT AND OPERATIONS CENTRE

1800 126 126

INCIDENT MANAGEMENT AND SUPPORT UNIT

1800 126 126

EMPLOYEE CONDUCT BRANCH

(03) 9637 2595

DIOCESAN OFFICE

Melbourne **(03) 9267 0228**
Ballarat **(03) 5337 7135**
Sale **(03) 5622 8600**
Sandhurst **(03) 5443 2377**

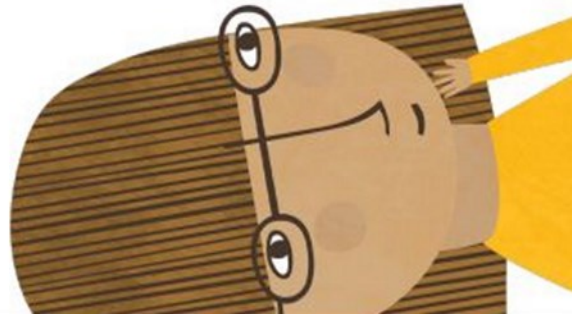
INDEPENDENT SCHOOLS

VICTORIA (03) 9825 7200

THE LOOKOUT

The LOOKOUT has a service directory, information, and evidence based guidance to help you respond to family violence: <http://www.lookout.org.au>

Family violence victims/survivors can be referred to **1800 Respect** for counselling, information and a referral service: **1800 737 732**



PROTECT

THE EDUCATION STATE

VICTORIA

CECV



Stanhope Primary School

Dear families,

We want to let you know about our school's emergency management plan. Our school plans for a range of hazards, such as bush or grassfire, severe weather, medical emergencies, building fires, intruders, etc. We develop specific response procedures to address these risks.

We also conduct drills regularly, ensuring that our core procedures of on-site and off-site evacuation, sheltering-in-place, and lockdown/lockouts are well-rehearsed and understood by staff and students.

If we enact our emergency management plan, we will notify you by any of the available means at the time, including text messages, uEducateUs, and Facebook, with updates on our actions. If there is anything we need you to do, we will let you know. Phone lines will need to be kept clear during any such emergency, so we ask families to cooperate with us in this matter.

During emergencies, we will work with emergency services and the Department of Education for safety advice and support. Please know that keeping our students and staff safe is our top priority.

Yours sincerely,

Acting Principal,

Fiona Wallace

Our school is a **Category 4** School.

We will **close** on a day forecasted as a **Catastrophic** fire danger rating in the **Northern Country**, fire district.

All school bus routes that travel through a **Catastrophic** fire district will be **cancelled**.

School preparations for the bushfire season

Each year, we undertake a range of activities to ensure the safety of our school and to prepare for bushfires and grassfires.

An important part of this process is communicating to parents what will happen when certain fire danger ratings are issued to help ensure the safety of students and staff.



Our school has been identified as being at risk of bushfire or grassfire and is a **Category 4 school.**

Our school will **close** on a day forecasted as **Catastrophic fire danger rating** in, **Northern Country, fire district.**

Closure of the school due to a Catastrophic fire danger rating will be enacted when the Bureau of Meteorology forecast and related public safety messaging are confirmed. Due to uncertainties in the forecast, the timing of this confirmation may vary. Information regarding potential or confirmed Catastrophic fire danger days will be communicated to you by SMS, uEducateUs Announcements, and, or the School Facebook page.

It is also important to be aware that:

- No one will be on site on days where the school is closed due to a forecast Catastrophic day.
- All bus routes that travel through the Catastrophic area will be cancelled.
- School camps will be cancelled if a Catastrophic fire danger rating day is forecast for fire weather district in which the camp is located, or if the travel involves passing through areas that have Catastrophic fire danger.

As part of preparing our school for the fire season, we have updated and completed our Emergency Management Plan and have carried out maintenance works that may assist in preparing for the threat of fire and cleared our facility's grounds and gutters.

What can families and the school community do to help us prepare?

- Keep in touch with us by reading our newsletters, checking our Facebook page, checking our website, <https://stanhopeps.vic.edu.au/>, by talking to your child's teacher or any other member of the teaching staff about our emergency management plan.]
- Make sure your family's bushfire survival plan is up-to-date and includes alternative care arrangements if our school is closed due to Catastrophic fire danger. Further information can be found on the [CFA's website](#).

- Action your family's bushfire survival plan if your own triggers are met. Our school community may be spread out across many areas and some families may be at higher risk than others. Your family's safety is critical, so please let us know if you are actioning your bushfire survival plan and if your children will be absent on these days.
- If your child is old enough, talk to [them about bushfires](#) and your family's bushfire survival plan.
- Families are encouraged to action their [Bushfire Survival Plan](#) on Catastrophic fire danger rating days in their district. The safest option is to leave the night before or early on the morning of the Catastrophic day. **On such days, children should never be left at home alone or in the care of older children.**

You can find more information on emergencies, warnings and preparedness actions here:

- VicEmergency app – that can be downloaded on your android and iOS mobile devices
- VicEmergency Hotline (1800 226 226)
- Website <https://emergency.vic.gov.au>
- Facebook (<https://www.facebook.com/vicemergency>)
- Twitter (<https://twitter.com/vicemergency>)
- ABC local radio, Sky News and other emergency broadcasters

Frequently Asked Questions

What is the department's policy?

The Department of Education annually assesses the fire risk of all schools and early childhood services with the support of the Commonwealth Scientific and Industrial Research Organisation (CSIRO). They are allocated a category of risk (categories 0 to 6). Schools and services that are Categories 0-3 are published on the [Bushfire At-Risk Register \(BARR\)](#). Schools at some risk of bushfire and grassfire are published on the [Category 4 List](#).

The department's [Bushfire and Grassfire Preparedness Policy](#) requires all schools and early childhood services on the BARR and the Category 4 List to close when a Catastrophic fire danger rating day is forecast in their fire weather district. All school bus routes which travel in or through a district with Catastrophic fire danger must also be cancelled.

The policy also requires that schools at the highest risk of bushfire (those in Categories 0, 1 and 2 of the Bushfire At-Risk Register) enact pre-emptive action plans based on the fire danger forecast for their Local Government Area (LGA).

Who issues fire danger forecasts?

The Bureau of Meteorology (BoM) provides public fire danger rating forecasts each day of the fire danger period using fire weather district areas. In Victoria, there are 9 fire weather districts, which are based on Local Government Area boundaries.

The department uses these forecasts when supporting schools to enact their pre-emptive bushfire actions plans.



FISH 'N' CHIPS

Minimum chips	\$ 4.00
Battered sav	\$ 3.50
Boneless wing ding	\$ 1.50
Calamari rings	\$ 1.80
Chicken dim sim	\$ 2.50
Chicken nugget	\$ 0.80
Chiko roll	\$ 3.50
Chilli chicken strip	\$ 2.00
Corn jack	\$ 3.50
Crab sticks	\$ 1.80
Crumbed prawns	\$ 1.80
Dim sim	\$ 1.50
Fish bites	\$ 1.80
Fish cakes	\$ 3.00

FISH

FLAKE	\$ 8.50
BLUE GRENADIER	\$ 9.00
Flat head fillets	\$ 2.50
Garlic chicken ball	\$ 1.80
Hash brown	\$ 1.20
Magdala	\$ 4.00
Mini dim sim	\$ 0.75
Mini spring roll	\$ 2.00
Pineapple fritter	\$ 3.00
Pluto pup	\$ 3.50
Potato cake	\$ 1.50
Scallops	\$ 1.80
South Melbourne dim sim	\$ 2.50
Spring roll	\$ 3.50
Wing ding	\$ 2.50

CHIPS, CHEESE & GRAVY

SMALL	\$ 7.00
MEDIUM	\$ 10.00
LARGE	\$ 13.00

Tomato sauce sachet \$ ***0.30***

LOADED FRIES

SMALL	\$ 9.00
LARGE	\$ 14.00

BURGERS

Bacon & Egg Roll	\$ 8.00
Bacon & Egg Sandwich	\$ 7.50
Chicken parma roll	\$ 13.00
Chicken schnitzel & gravy roll	\$ 9.00
Chicken schnitzel & salad roll	\$ 8.50
Chicken schnitzel with the lot	\$ 15.00
Chicken wrap with the LOT	\$ 13.00
PLAIN	\$ 11.00
Fish burger with the LOT	\$ 15.00
PLAIN	\$ 12.00
Hamburger with the LOT	\$ 13.00
PLAIN	\$ 11.00
Souvlaki- beef/lamb/chicken	
LOT	\$ 13.00
PLAIN	\$ 11.00
Steak sandwich with the LOT	\$ 12.00
PLAIN	\$ 10.00

Sauces- tomato, bbq, mayo, garlic, sweet chilli, hot chilli, tartare

EXTRAS

Gravy on chips	\$ 2.00
Meat	\$ 4.00
Bacon or Egg	\$ 2.00
Cheese or Pineapple	\$ 1.00
Squeezy sauce - per sachet	\$ 0.30
Small salad	\$ 6.00
Large salad	\$ 7.00

BAKERY

Plain pie	\$ 5.50
Flavoured pie	\$ 5.90
Sausage Roll	\$ 4.80
Pastie	\$ 4.80
Salad only rolls	\$ 6.50
Meat and salad rolls	\$ 8.00
Salad only sandwich	\$ 6.00
Meat and salad sandwich	\$ 7.50
Salad wraps	\$ 8.00