



# Stanhope Primary School

Learning • Success • Respect • Citizenship



Principal: Christine Owen

Phone: 03 5857 2514

Mobile: 0419 548 318

Email: [stanhope.ps@education.vic.gov.au](mailto:stanhope.ps@education.vic.gov.au)

## Newsletter

48 Midland Highway

PO Box 19

Stanhope, Victoria 3623

<http://stanhopeps.vic.edu.au>

### Inspiring Lifelong Learning

ISSUE 24: August 15th 2024

#### REMINDERS & THINGS TO DO

#### DATES TO REMEMBER



*Congratulations*

**COOPER**

Cooper scooped the pool of first place ribbons in his age group at the Mini Olympics Day at Girgarre Primary School last Friday.

#### Friday 16th August

- ◆ Grade 3-6 Athletics at Ky P-12 by parent transport. Students to arrive at Ky P-12 Hall by 8.50am

#### Wednesday 21st August

- ◆ Café Lunch Orders

#### Thursday 22nd August

- ◆ Book Week Parade & Kinder visit at 12.30pm (BOOK-BASED THEME PLEASE)
- ◆ ART

#### Wednesday 28th August

- ◆ School Council 7pm  
RESCHEDULED

#### Thursday 29th August

- ◆ LIBRARY

#### Thursday 5th September

- ◆ ART

#### Thursday 12th September

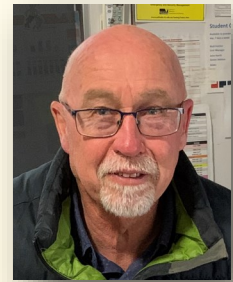
- ◆ LIBRARY

# PRINCIPAL'S MESSAGE: Graeme Hodgens



## Staffing

It is with great pleasure that we can confirm that Fiona Wallace will be returning to be the Acting Principal at Stanhope PS until the end of the year. Fiona brings experience both at this school but across her career and is passionate about taking on this role. Mrs Wallace will commence the role next Wednesday the 21<sup>st</sup> of August. I will continue to act as the Principal until this time. Although we have not been able to replace Mrs Foley, Mrs Feldtmann has agreed to continue to teach on Mondays and I will teach on Tuesdays until the end of this term. This will give our students some consistency and support Mrs D. in the classroom program.



## Daisy Horton – Public Speaking

Daisy represented us at the Lions Public speaking competition on Sunday and we can be proud of her effort. She has battled some illness leading up to the day and can be proud of the way she has overcome this and taken her place. Well done Daisy, we are all proud of you.

## Kyabram Athletic sports – Grade 3 -6

The Kyabram Athletic sports are on tomorrow weather permitting! Mrs D will be told tomorrow morning if they are postponed until next week if the expected rain comes. The school will call parents in the morning if they are cancelled. Families need to have their children at the Kyabram P-12 school hall on Fischer Street before the 9.00 start. Mrs D and Jody will be there to support them. Children in Prep – Grade 2 attend school as usual.

## Mini Olympics at Girgarre

It was a fantastic day last week at Girgarre. All our students who attended joined in with a positive attitude and we can be proud of their efforts. Cooper worked extremely hard and won his age group. A huge effort, well done Cooper!

## Curriculum Day

While our students no doubt enjoyed a day of freedom the staff were at school and worked very hard at organising a range of programs to run across the school.

## Lollies at School

A reminder to parents that lollies are not a school food. The occasional treat at lunch is okay however students bringing bags of lollies to school is not helpful. Students are not eating their lunches and sharing lollies with some students and not others. Please let your child enjoy their lollies at home.



FROM THE  
**Business  
Manager**

Mica will be in the office on  
Tuesdays and Thursdays.

I am happy to discuss  
confidential payment  
options for fees or camps  
& excursions with you.

## Café Lunch Orders

**3rd Wednesday  
of every month**

**18<sup>th</sup> September  
16<sup>th</sup> October  
20<sup>th</sup> November  
18<sup>th</sup> December**

**NEW PRICE LIST  
ATTACHED  
TO THIS  
NEWSLETTER**

**360°  
DEGREES  
STILL LIFE**

**WATERCOLOURS**

by the

***Stanhope Primary Artists***

**NOW SHOWING**

**at the Stanhope Art Space  
for the month of August**

Thank you to our generous sponsors

proPAVE  
landscapes

Phil De'Ath  
0418 527 365

Lina Ding  
0412 266 635

KYABRAMS  
MAIN STREET  
**BUTCHERY**

"The Best Meat by Miles"

170 Allan St, Kyabram PH: 5853 2123



*Kyabram* CLUB  
*Where good friends meet*



- Stanhope Supermarket
- Stanhope RSL Sub Branch

**DISCLAIMER:** The Department of Education & Training, and Stanhope Primary School do not endorse the products or services of any private advertiser. No responsibility is accepted by the Department or the School for the accuracy of information contained in advertisements.

**PROTECT**

Protecting children & young people  
from abuse is our responsibility



**HELP IS BUT A PHONE CALL AWAY**

**LIFELINE**

**13 11 14**

**KID'S HELPLINE**

**1800 55 1800**

**BEYOND BLUE**

**1300 22 4636**

**AWARDS**

**NO ASSEMBLY HELD LAST WEEK OR  
TOMORROW DUE TO THE  
SPORTS DAYS**

<https://www.facebook.com/stanhopeps/>



# Child safety and wellbeing at Stanhope Primary School

## *information for families and the school community*

The Victorian Government has announced new [Child Safe Standards](#) to further strengthen child safety across organisations, including schools. The new standards recognise the critical importance of families and the broader school community in maintaining and promoting child safety and wellbeing.

Stanhope Primary School has reviewed and updated our child safety policies and procedures to ensure they meet the requirements of the new standards. These are available to view our school's website, via UeducateUs, and at the school's front office.

We are committed to continuous improvement in our approach to child safety and wellbeing and welcome feedback from families and members of our school community on ways we can further strengthen our child safety policies, procedures and practices.

If you have any suggestions, comments or questions, please contact Stanhope Primary School at [stanhope.ps@education.vic.gov.au](mailto:stanhope.ps@education.vic.gov.au) or by phone on 03 5857 2514.

## Victoria's Child Safe Standards

- **Child Safe Standard 1** – Establish a culturally safe environment in which the diverse and unique identities and experiences of Aboriginal children and young people are respected and valued.
- **Child Safe Standard 2** – Ensure that child safety and wellbeing are embedded in school leadership, governance and culture.
- **Child Safe Standard 3** – Children and young people are empowered about their rights, participate in decisions affecting them and are taken seriously.
- **Child Safe Standard 4** – Families and communities are informed and involved in promoting child safety and wellbeing.
- **Child Safe Standard 5** – Equity is upheld and diverse needs are respected in policy and practice.
- **Child Safe Standard 6** – People working with children and young people are suitable and supported to reflect child safety and wellbeing values in practice.
- **Child Safe Standard 7** – Ensure that processes for complaints and concerns are child focused.
- **Child Safe Standard 8** – Staff and volunteers are equipped with the knowledge, skills and awareness to keep children and young people safe through ongoing education and training.
- **Child Safe Standard 9** – Physical and online environments promote safety and wellbeing while minimising the opportunity for children and young people to be harmed.
- **Child Safe Standard 10** – Implementation of the Child Safe Standards is regularly reviewed and improved.
- **Child Safe Standard 11** – Policies and procedures that document how schools are safe for children, young people and students.
- Ministerial Order 1359 provides the framework for child safety in schools.

## FOUR CRITICAL ACTIONS FOR SCHOOLS

# Responding to Incidents, Disclosures and Suspicions of Child Abuse

### 1 RESPONDING TO AN EMERGENCY

If there is no risk of immediate harm go to **Action 2**

If a child is at immediate risk of harm you **must** ensure their safety by:

- separating alleged victims and others involved
- administering first aid
- calling **000** for urgent medical and/or police assistance to respond to immediate health or safety concerns
- identifying a contact person at the school for future liaison with Police.

Where necessary you may also need to maintain the integrity of the potential crime scene and preserve evidence.

### 2 REPORTING TO AUTHORITIES / REFERRING TO SERVICES

As soon as immediate health and safety concerns are addressed you **must** report all incidents, suspicions and disclosures of child abuse as soon as possible. Failure to report physical and sexual child abuse may amount to a criminal offence.

Q: Where does the source of suspected abuse come from?

#### WITHIN THE SCHOOL

**VICTORIA POLICE**  
You **must** report all instances of suspected child abuse involving a school staff member, contractor, volunteer or visitor to Victoria Police.

You **must also** report internally to:  
**GOVERNMENT SCHOOLS**  
School principal and/or leadership team  
Employee Conduct Branch  
DET Incident Support and Operations Centre.

**CATHOLIC SCHOOLS**  
School principal and/or leadership team  
Diocesan education office.

**INDEPENDENT SCHOOLS**  
School principal and/or school chairperson  
Commission for Children and Young People on **1300 782 978**

All allegations of 'reportable conduct' **must** be reported as soon as possible to:

**GOVERNMENT SCHOOLS**  
Employee Conduct Branch

**CATHOLIC SCHOOLS**  
Diocesan education office

**INDEPENDENT SCHOOLS**  
Commission for Children and Young People on **1300 782 978**.

#### OTHER CONCERNS

If you believe that a child is not subject to abuse, but you still hold **significant concerns** for their wellbeing you **must** still act. This may include making a referral or seeking advice from:

- Child FIRST/The Orange Door (in circumstances where the family are open to receiving support)
- DHHS Child Protection
- Victoria Police.

### 3 CONTACTING PARENTS/CARERS

Your principal **must** consult with DHHS Child Protection or Victoria Police to determine what information can be shared with parents/carers. They may advise:

- not to contact** the parents/carer (e.g. in circumstances where the parents are alleged to have engaged in the abuse, or the child is a mature minor and does not wish for their parent/carer to be contacted)
- to contact** the parents/carers and provide agreed information (this must be done as soon as possible, preferably on the same day of the incident, disclosure or suspicion)
- how to communicate** with all relevant parties with consideration for their safety.

### 4 PROVIDING ONGOING SUPPORT

Your school **must** provide support for children impacted by abuse. This should include the development of a **Student Support Plan** in consultation with wellbeing professionals. This is an essential part of your duty of care requirements.

Strategies may include development of a safety plan, direct support and referral to wellbeing professionals and support.

You **must** follow the **Four Critical Actions** every time you become aware of a further instance or risk of abuse. This includes reporting new information to authorities.

### YOU MUST TAKE ACTION

You **must** act, by following the Four Critical Actions, as soon as you witness an incident, receive a disclosure or form a reasonable belief\* that a child has, or is at risk of being abused.

As a school staff member, you play a **critical role** in protecting children in your care.

You **must** act if you form a suspicion or reasonable belief, even if you are unsure and have not directly observed child abuse (e.g. if the victim or another person tells you about the abuse).

\*A reasonable belief is a deliberately low threshold. This enables authorities to investigate and take action.

### CONTACT

#### DHHS CHILD PROTECTION

**AREA**  
North Division **1300 664 977**  
South Division **1300 655 795**  
East Division **1300 300 391**  
West Division (Rural) **1800 075 599**  
West Division (Metro) **1300 664 977**

**AFTER HOURS**  
After hours, weekends, public holidays **13 12 78**

**CHILD FIRST**  
<https://services.dhhs.vic.gov.au/federal-and-support-teams>

**ORANGE DOOR**  
<https://www.vic.gov.au/familyviolence/the-orange-door.html>

#### VICTORIA POLICE

000 or your local police station

**DET INCIDENT SUPPORT AND OPERATIONS CENTRE**  
**1800 126 126**

**INCIDENT MANAGEMENT AND SUPPORT UNIT**  
**1800 126 126**

**EMPLOYEE CONDUCT BRANCH**  
**(03) 9637 2595**

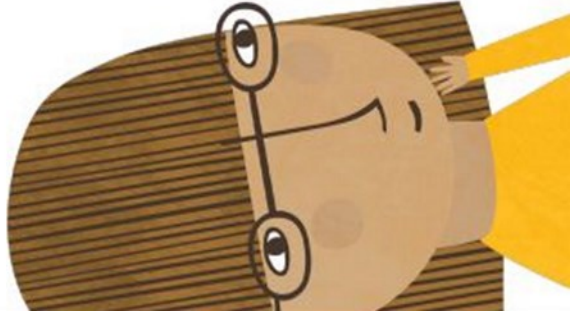
**DIOCESAN OFFICE**  
Melbourne **(03) 9267 0228**  
Ballarat **(03) 5337 7135**  
Sale **(03) 5622 8600**  
Sandhurst **(03) 5443 2377**

#### INDEPENDENT SCHOOLS

**VICTORIA**  
**(03) 9825 7200**

**THE LOOKOUT**  
The LOOKOUT has a service directory, information, and evidence based guidance to help you respond to family violence: <http://www.lookout.org.au>

Family violence victims/survivors can be referred to **1800 Respect** for counselling, information and a referral service: **1800 737 732**



**PROTECT**

THE EDUCATION STATE

VICTORIA  
Education and Training

CECV  
CHILD EDUCATION COMMUNITY CONNECTIONS





**FISH 'N' CHIPS**

Minimum chips	\$ 4.00
Battered sav	\$ 3.50
Boneless wing ding	\$ 1.50
Calamari rings	\$ 1.80
Chicken dim sim	\$ 2.50
Chicken nugget	\$ 0.80
Chiko roll	\$ 3.50
Chilli chicken strip	\$ 2.00
Corn jack	\$ 3.50
Crab sticks	\$ 1.80
Crumbed prawns	\$ 1.80
Dim sim	\$ 1.50
Fish bites	\$ 1.80
Fish cakes	\$ 3.00

**FISH**

FLAKE	\$ 8.50
BLUE GRENADIER	\$ 9.00
Flat head fillets	\$ 2.50
Garlic chicken ball	\$ 1.80
Hash brown	\$ 1.20
Magdala	\$ 4.00
Mini dim sim	\$ 0.75
Mini spring roll	\$ 2.00
Pineapple fritter	\$ 3.00
Pluto pup	\$ 3.50
Potato cake	\$ 1.50
Scallops	\$ 1.80
South Melbourne dim sim	\$ 2.50
Spring roll	\$ 3.50
Wing ding	\$ 2.50

**CHIPS, CHEESE & GRAVY**

SMALL	\$ 7.00
MEDIUM	\$ 10.00
LARGE	\$ 13.00

***Tomato sauce sachet*** \$ ***0.30***

**LOADED FRIES**

SMALL	\$ 9.00
LARGE	\$ 14.00

**BURGERS**

Bacon & Egg Roll	\$ 8.00
Bacon & Egg Sandwich	\$ 7.50
Chicken parma roll	\$ 13.00
Chicken schnitzel & gravy roll	\$ 9.00
Chicken schnitzel & salad roll	\$ 8.50
Chicken schnitzel with the lot	\$ 15.00
Chicken wrap with the LOT	\$ 13.00
PLAIN	\$ 11.00
Fish burger with the LOT	\$ 15.00
PLAIN	\$ 12.00
Hamburger with the LOT	\$ 13.00
PLAIN	\$ 11.00
Souvlaki- beef/lamb/chicken	
LOT	\$ 13.00
PLAIN	\$ 11.00
Steak sandwich with the LOT	\$ 12.00
PLAIN	\$ 10.00

***Sauces- tomato, bbq, mayo, garlic, sweet chilli, hot chilli, tartare***

**EXTRAS**

Gravy on chips	\$ 2.00
Meat	\$ 4.00
Bacon or Egg	\$ 2.00
Cheese or Pineapple	\$ 1.00
Squeezy sauce - per sachet	\$ 0.30
Small salad	\$ 6.00
Large salad	\$ 7.00

**BAKERY**

Plain pie	\$ 5.50
Flavoured pie	\$ 5.90
Sausage Roll	\$ 4.80
Pastie	\$ 4.80
Salad only rolls	\$ 6.50
Meat and salad rolls	\$ 8.00
Salad only sandwich	\$ 6.00
Meat and salad sandwich	\$ 7.50
Salad wraps	\$ 8.00