



# Stanhope Primary School

Learning • Success • Respect • Citizenship



Principal: Christine Owen

Phone: 03 5857 2514

Mobile: 0419 548 318

Email: [stanhope.ps@education.vic.gov.au](mailto:stanhope.ps@education.vic.gov.au)

## Newsletter

48 Midland Highway

PO Box 19

Stanhope, Victoria 3623

<http://stanhopeps.vic.edu.au>

### Inspiring Lifelong Learning

ISSUE 22: August 1st 2024

#### REMINDERS & THINGS TO DO

##### GLASSES FOR KIDS

**FREE**

##### CHANGE OF DATE

The qualified Optometrist will now visit our school on **WEDNESDAY 7TH AUGUST**

*Please return the attached consent form as soon as possible to take advantage of this great opportunity to have your child's eyesight tested.*

##### CAFÉ LUNCH ORDERS

Please note that the Café Price List attached to the newsletter has been updated.



#### DATES TO REMEMBER

##### Wednesday 7th August

- ◆ Buddies visit Kinder
- ◆ Glasses for Kids

##### Thursday 8th August

- ◆ ART

##### Friday 9th August

- ◆ Mini Olympics at Girgarre PS

##### Wednesday 14th August

- ◆ CURRICULUM DAY  
No students at school

##### Friday 16th August

- ◆ Grade 3-6 Athletics at Kyabram P-12. Parent transport. 8.50am

##### Wednesday 21st August

- ◆ Café Lunch Orders
- ◆ School Council 7pm

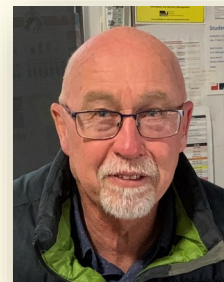
##### Thursday 28th August

- ◆ Book Week Parade & Kinder visit

# PRINCIPAL'S MESSAGE: Graeme Hodgens



It's been a foggy and frosty week with the pie warmer very popular at school!



## Ms Owen Visit

On Tuesday Ms Owen popped in for a visit to the school. It was great to see her and to have a chance to talk about how the school is going in her absence. She is unable to drive, however Mica was able to pick her up and return her back home at the end of the day.

## Glasses

A reminder that our Glasses For Kids program will take place at school next Wednesday the 7<sup>th</sup> of August. I have been involved with this program before and they do a brilliant job!

## Practicing for Aths Sports

We have been practising for the up coming "aths" sports and can see some budding champions coming through. All we ask is that everyone tries to do their best.

## Mini Olympics

The whole school will be going to Girgarre next Friday, by bus. This is an annual event and we look forward to mixing with students from our surrounding schools. We are still waiting on a couple of permission forms to come back.

## Grade 3-6 Kyabram Athletic Sports- 16<sup>th</sup> of August

Megan will be our head coach and is grooming our team ready to compete.

**Families need to have students at Kyabram P-12 College at 8.50am.** Mrs D will be there to meet students. This is earlier than the traditional time. If parents are unable to get their children there please let us know in advance so we can make arrangements to support them.

Our prep, grade 1 and grade 2 students will attend school as normal.



FROM THE  
**Business  
Manager**

Mica will be in the office on Tuesdays and Thursdays.

I am happy to discuss confidential payment options for fees or camps & excursions with you.

## Café Lunch Orders

**3rd Wednesday  
of every month**

**21<sup>st</sup> August  
18<sup>th</sup> September  
16<sup>th</sup> October  
20<sup>th</sup> November  
18<sup>th</sup> December**

**NEW PRICE LIST  
ATTACHED  
TO THIS  
NEWSLETTER**

## 2024 Parent / Caregiver / Guardian Opinion Survey:

### WE WANT OUR PARENTS / CAREGIVERS / GUARDIANS TO TELL US WHAT THEY THINK!

Our school is conducting the annual Parent / Caregiver / Guardian Opinion Survey offered by the Department of Education and is seeking your feedback. The survey is designed to assist schools in gaining an understanding of families' perceptions of school climate, student behavior, and student engagement. The survey is optional, but we encourage and appreciate your participation. Our school will use the survey results to assist in identifying areas for improvement and professional development needs in the school, to target school planning and improvement strategies.

The Parent / Caregiver / Guardian Opinion Survey will be open online from **Monday 29 July to Friday 30 August 2024**.

**All families are invited to participate in the survey.**

The survey will be conducted **online**, only takes **20 minutes** to complete, and can be accessed at any convenient time on desktop computers, laptops, tablets or smartphones.

Last year we used the survey results to plan for how to better make our school more family friendly and to improve connections with other schools and our kinder for the purpose of transition and networking.

Please speak to us if you would like more information.

Hello From Mrs Owen!



Thanks to Mica who picked me up, I was able to visit the school on Tuesday. I received a whole bunch of lovely Get Well cards and messages from the students and staff. I will be off school for the rest of this term, due to not being able to drive or have full function in my dominant hand, and needing to attend a lot of follow up physio. However, I will aim to visit when I can to catch up with students and staff. I know Mr Hodgens is doing a great job holding the reins and looking after the school. Thank you Mr Hodgens!

NOW ON AT  
Stanhope Art  
Space

# 360° DEGREES STILL LIFE

WATERCOLOURS  
by the  
*Stanhope Primary Artists*

## Stanhope Primary School ENROLMENTS

Enrolments are welcome  
for our school.

Parents or carers can  
contact the school to speak  
with the principal,  
Christine, or to collect an  
enrolment pack.

School tours by  
appointment.



- ◆ Small caring environment.
- ◆ Individual learning plans to ensure high student outcomes.
- ◆ Engaging curriculum delivery.
- ◆ Parent involvement encouraged.

Thank you to our generous sponsors

proPAVE  
landscapes

Phil De'Ath  
0418 527 365

Lina Ding  
0412 266 635

KYABRAM  
MAIN STREET  
**BUTCHERY**

"The Best Meat by Miles"

170 Allan St, Kyabram PH: 5853 2123



*Kyabram* CLUB  
*Where good friends meet*



- Stanhope Supermarket
- Stanhope RSL Sub Branch

**DISCLAIMER:** The Department of Education & Training, and Stanhope Primary School do not endorse the products or services of any private advertiser. No responsibility is accepted by the Department or the School for the accuracy of information contained in advertisements.

**PROTECT**

Protecting children & young people  
from abuse is our responsibility



**HELP IS BUT A PHONE CALL AWAY**

**LIFELINE**  
**13 11 14**

**KID'S HELPLINE**  
**1800 55 1800**

**BEYOND BLUE**  
**1300 22 4636**

## AWARDS

**Good Citizenship Award:**  
Tyler, Alexis & Mercedes.



<https://www.facebook.com/stanhopeps/>



# Child safety and wellbeing at Stanhope Primary School

## *information for families and the school community*

The Victorian Government has announced new [Child Safe Standards](#) to further strengthen child safety across organisations, including schools. The new standards recognise the critical importance of families and the broader school community in maintaining and promoting child safety and wellbeing.

Stanhope Primary School has reviewed and updated our child safety policies and procedures to ensure they meet the requirements of the new standards. These are available to view our school's website, via UeducateUs, and at the school's front office.

We are committed to continuous improvement in our approach to child safety and wellbeing and welcome feedback from families and members of our school community on ways we can further strengthen our child safety policies, procedures and practices.

If you have any suggestions, comments or questions, please contact Stanhope Primary School at [stanhope.ps@education.vic.gov.au](mailto:stanhope.ps@education.vic.gov.au) or by phone on 03 5857 2514.

## Victoria's Child Safe Standards

- **Child Safe Standard 1** – Establish a culturally safe environment in which the diverse and unique identities and experiences of Aboriginal children and young people are respected and valued.
- **Child Safe Standard 2** – Ensure that child safety and wellbeing are embedded in school leadership, governance and culture.
- **Child Safe Standard 3** – Children and young people are empowered about their rights, participate in decisions affecting them and are taken seriously.
- **Child Safe Standard 4** – Families and communities are informed and involved in promoting child safety and wellbeing.
- **Child Safe Standard 5** – Equity is upheld and diverse needs are respected in policy and practice.
- **Child Safe Standard 6** – People working with children and young people are suitable and supported to reflect child safety and wellbeing values in practice.
- **Child Safe Standard 7** – Ensure that processes for complaints and concerns are child focused.
- **Child Safe Standard 8** – Staff and volunteers are equipped with the knowledge, skills and awareness to keep children and young people safe through ongoing education and training.
- **Child Safe Standard 9** – Physical and online environments promote safety and wellbeing while minimising the opportunity for children and young people to be harmed.
- **Child Safe Standard 10** – Implementation of the Child Safe Standards is regularly reviewed and improved.
- **Child Safe Standard 11** – Policies and procedures that document how schools are safe for children, young people and students.
- Ministerial Order 1359 provides the framework for child safety in schools.

## FOUR CRITICAL ACTIONS FOR SCHOOLS

# Responding to Incidents, Disclosures and Suspicions of Child Abuse

### 1 RESPONDING TO AN EMERGENCY

If there is no risk of immediate harm go to **Action 2**

If a child is at immediate risk of harm you **must** ensure their safety by:

- separating alleged victims and others involved
- administering first aid
- calling **000** for urgent medical and/or police assistance to respond to immediate health or safety concerns
- identifying a contact person at the school for future liaison with Police.

Where necessary you may also need to maintain the integrity of the potential crime scene and preserve evidence.

### 2 REPORTING TO AUTHORITIES / REFERRING TO SERVICES

As soon as immediate health and safety concerns are addressed you **must** report all incidents, suspicions and disclosures of child abuse as soon as possible. Failure to report physical and sexual child abuse may amount to a criminal offence.

Q: Where does the source of suspected abuse come from?

#### WITHIN THE SCHOOL

**VICTORIA POLICE**  
You **must** report all instances of suspected child abuse involving a school staff member, contractor, volunteer or visitor to Victoria Police.

You **must also** report internally to:

- GOVERNMENT SCHOOLS**
  - School principal and/or leadership team
  - Employee Conduct Branch
  - DET Incident Support and Operations Centre.
- CATHOLIC SCHOOLS**
  - School principal and/or leadership team
  - Diocesan education office.
- INDEPENDENT SCHOOLS**
  - School principal and/or school chairperson
  - Commission for Children and Young People on **1300 782 978**

All allegations of 'reportable conduct' **must** be reported as soon as possible to:

- GOVERNMENT SCHOOLS**
  - Employee Conduct Branch
- CATHOLIC SCHOOLS**
  - Diocesan education office
- INDEPENDENT SCHOOLS**
  - Commission for Children and Young People on **1300 782 978**.

#### OTHER CONCERNS

If you believe that a child is not subject to abuse, but you still hold **significant concerns** for their wellbeing you **must** still act. This may include making a referral or seeking advice from:

- Child FIRST/The Orange Door (in circumstances where the family are open to receiving support)
- DHHS Child Protection
- Victoria Police.

### 3 CONTACTING PARENTS/CARERS

Your principal **must** consult with DHHS Child Protection or Victoria Police to determine what information can be shared with parents/carers. They may advise:

- not to contact** the parents/carer (e.g. in circumstances where the parents are alleged to have engaged in the abuse, or the child is a mature minor and does not wish for their parent/carer to be contacted)
- to contact** the parents/carers and provide agreed information (this must be done as soon as possible, preferably on the same day of the incident, disclosure or suspicion)
- how to communicate** with all relevant parties with consideration for their safety.

### 4 PROVIDING ONGOING SUPPORT

Your school **must** provide support for children impacted by abuse. This should include the development of a **Student Support Plan** in consultation with wellbeing professionals. This is an essential part of your duty of care requirements.

Strategies may include development of a safety plan, direct support and referral to wellbeing professionals and support.

You **must** follow the **Four Critical Actions** every time you become aware of a further instance or risk of abuse. This includes reporting new information to authorities.

### YOU MUST TAKE ACTION

You **must** act, by following the Four Critical Actions, as soon as you witness an incident, receive a disclosure or form a reasonable belief\* that a child has, or is at risk of being abused.

As a school staff member, you play a **critical role** in protecting children in your care.

You **must** act if you form a suspicion or reasonable belief, even if you are unsure and have not directly observed child abuse (e.g. if the victim or another person tells you about the abuse).

\*A reasonable belief is a deliberately low threshold. This enables authorities to investigate and take action.

### CONTACT

#### DHHS CHILD PROTECTION

**AREA**  
North Division **1300 664 977**  
South Division **1300 655 795**  
East Division **1300 300 391**  
West Division (Rural) **1800 075 599**  
West Division (Metro) **1300 664 977**

#### AFTER HOURS

After hours, weekends, public holidays **13 12 78**

#### CHILD FIRST

<https://services.dhhs.vic.gov.au/federal-and-support-teams>

#### ORANGE DOOR

<https://www.vic.gov.au/familyviolence/the-orange-door.html>

#### VICTORIA POLICE

000 or your local police station

#### DET INCIDENT SUPPORT AND OPERATIONS CENTRE

1800 126 126

#### INCIDENT MANAGEMENT AND SUPPORT UNIT

1800 126 126

#### EMPLOYEE CONDUCT BRANCH

(03) 9637 2595

#### DIOCESAN OFFICE

Melbourne (03) 9267 0228  
Ballarat (03) 5337 7135  
Sale (03) 5622 8600  
Sandhurst (03) 5443 2377

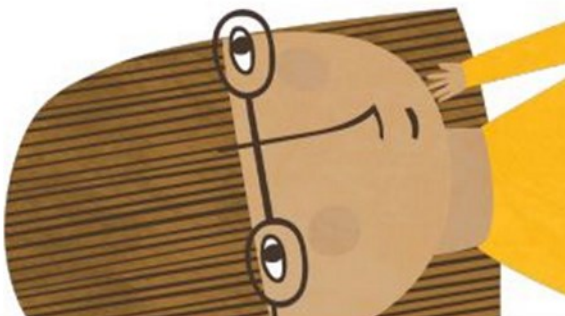
#### INDEPENDENT SCHOOLS

VICTORIA  
(03) 9825 7200

#### THE LOOKOUT

The LOOKOUT has a service directory, information, and evidence based guidance to help you respond to family violence: <http://www.lookout.org.au>

Family violence victims/survivors can be referred to **1800 Respect** for counselling, information and a referral service: **1800 737 732**



**PROTECT**

THE EDUCATION STATE

VICTORIA  
Education and Training

CECV  
CHILD EDUCATION COMMUNITY CONNECTIONS OF VICTORIA





**FISH 'N' CHIPS**

Minimum chips	\$ 4.00
Battered sav	\$ 3.50
Boneless wing ding	\$ 1.50
Calamari rings	\$ 1.80
Chicken dim sim	\$ 2.50
Chicken nugget	\$ 0.80
Chiko roll	\$ 3.50
Chilli chicken strip	\$ 2.00
Corn jack	\$ 3.50
Crab sticks	\$ 1.80
Crumbed prawns	\$ 1.80
Dim sim	\$ 1.50
Fish bites	\$ 1.80
Fish cakes	\$ 3.00

**FISH**

FLAKE	\$ 8.50
BLUE GRENADIER	\$ 9.00
Flat head fillets	\$ 2.50
Garlic chicken ball	\$ 1.80
Hash brown	\$ 1.20
Magdala	\$ 4.00
Mini dim sim	\$ 0.75
Mini spring roll	\$ 2.00
Pineapple fritter	\$ 3.00
Pluto pup	\$ 3.50
Potato cake	\$ 1.50
Scallops	\$ 1.80
South Melbourne dim sim	\$ 2.50
Spring roll	\$ 3.50
Wing ding	\$ 2.50

**CHIPS, CHEESE & GRAVY**

SMALL	\$ 7.00
MEDIUM	\$ 10.00
LARGE	\$ 13.00
<i>Tomato sauce sachet</i>	<i>\$ 0.30</i>

**LOADED FRIES**

SMALL	\$ 9.00
LARGE	\$ 14.00

**BURGERS**

Bacon & Egg Roll	\$ 8.00
Bacon & Egg Sandwich	\$ 7.50
Chicken parma roll	\$ 13.00
Chicken schnitzel & gravy roll	\$ 9.00
Chicken schnitzel & salad roll	\$ 8.50
Chicken schnitzel with the lot	\$ 15.00
Chicken wrap with the LOT	\$ 13.00
PLAIN	\$ 11.00
Fish burger with the LOT	\$ 15.00
PLAIN	\$ 12.00
Hamburger with the LOT	\$ 13.00
PLAIN	\$ 11.00
Souvlaki- beef/lamb/chicken	
LOT	\$ 13.00
PLAIN	\$ 11.00
Steak sandwich with the LOT	\$ 12.00
PLAIN	\$ 10.00

*Sauces- tomato, bbq, mayo, garlic, sweet chilli, hot chilli, tartare*

**EXTRAS**

Gravy on chips	\$ 2.00
Meat	\$ 4.00
Bacon or Egg	\$ 2.00
Cheese or Pineapple	\$ 1.00
Squeezy sauce - per sachet	\$ 0.30
Small salad	\$ 6.00
Large salad	\$ 7.00

**BAKERY**

Plain pie	\$ 5.50
Flavoured pie	\$ 5.90
Sausage Roll	\$ 4.80
Pastie	\$ 4.80
Salad only rolls	\$ 6.50
Meat and salad rolls	\$ 8.00
Salad only sandwich	\$ 6.00
Meat and salad sandwich	\$ 7.50
Salad wraps	\$ 8.00



# Introducing Stanhope Telecare Medical Centre

## Background

Telecare collaborates with Kyabram District Health Service (KDHS) to bring you a new GP service at Stanhope Health: Stanhope Telecare Medical Centre.

## Values

At Stanhope Telecare Medical Centre, we prioritize compassion, excellence, and accessibility. We provide personalized, compassionate care and strive for clinical excellence in both in-person and virtual consultations.

## Goals

Our goal at Stanhope Telecare Medical Centre is to enhance community health through integrated healthcare solutions. We aim to provide seamless access to healthcare services, blending traditional and telehealth consultations. By prioritizing patient empowerment and wellbeing, we seek to foster a healthier community where every individual feels valued and supported in their healthcare journey.



Stanhope Telecare  
Medical Centre



KYABRAM DISTRICT  
HEALTH SERVICE



## Visit us

-  35 Birdwood Ave, Stanhope, VIC 3623
-  (03) 4800 5291
-  03 7048 9997
-  <https://www.telecare.com.au/stanhope>
-  [stanhope@telecare.com.au](mailto:stanhope@telecare.com.au)

## Book now!



Book an appointment with your preferred doctor and see up to date availability and book instantly.  
Scan the QR code here.

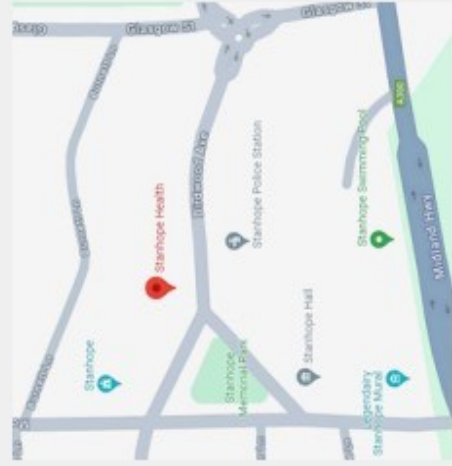
# Our Services

## Face-to-Face Consultations

our GP service offers face-to-face consultations five days a week initially (12-30 August 2024). Following this period, we will provide two days of face-to-face consultations per month. This ensures personalized care with our experienced Telecare GPs

## Telehealth Consultations

Stanhope Telecare Medical Centre introduces weekly telehealth consultations. This innovative service allows you to connect with our dedicated GPs remotely, ensuring continued access to quality healthcare tailored to your convenience and needs.



# Rebates and Prices

## Appointment cost

Service	Price	Gap Fee
1] Standard Consultation (20 mins)	\$80 MBS Rebate (\$42.85)	\$37.15
2] Long Consult (> 20 mins)	\$120.00 MBS Rebate (\$82.90)	\$37.1
3] Telehealth (Video consultation (>6min and < 20 mins)	\$80.00 MBS Rebate (\$42.85)	\$37.15
4] Telehealth (Phone) Consult (>6 mins & <20mins)	\$80.00 MBS Rebate (\$42.85)	\$37.15

**Appointments will be bulk billed for pension and concession card holders and children under 16 years.**

**All other appointments for non-concession card holders are Medicare rebate-able and consumers will have to pay the full fee of \$80 with a Medicare rebate of \$42.85, which is a \$37.15 out of pocket gap fee**

# Our GP's



**Dr Raymond Wen**

Raymond graduated with honours from the University of Melbourne and subsequently worked at the Royal Melbourne Hospital.

- Areas of interest:
- Preventative health care
  - Mental health



**Dr Ken-Tze Koh**

Dr. Ken is a highly experienced rural and remote locum in General Practice and Emergency Medicine. With qualifications including an M.B., B.S., F.R.A.C.G.P., and a Diploma in Mountain Medicine.

- Areas of interest:
- Skin cancer medicine
  - Aviation medicine
  - Health assessments
  - Health promotion
  - Preventative health care
  - Chronic disease management

**BULK-BILLING to ALL:  
From 12-30th August 2024**