



Stanhope Primary School

Learning • Success • Respect • Citizenship



Principal: Christine Owen

Phone: 03 5857 2514

Mobile: 0419 548 318

Email: stanhope.ps@education.vic.gov.au

Newsletter

48 Midland Highway

PO Box 19

Stanhope, Victoria 3623

<http://stanhopeps.vic.edu.au>

Inspiring Lifelong Learning

ISSUE 6: March 7th 2024

REMINDERS & THINGS TO DO

Stanhope Primary School

SCHOOL COUNCIL

Our AGM will be held on Wednesday
20th March 2024 at 7pm.

There is 1 parent vacancy.

*A nomination form is attached to our
newsletter if you would like to be an
integral part of our team.*

***NOMINATIONS for 2024 HAVE NOW
CLOSED***

NAPLAN

NAPLAN testing begins next week for
students in Grades 3 and 5. All tests will begin
at 9.00am on each of the following days:

- Wednesday March 13 - writing test
- Friday March 15 - reading test
- Monday March 18 – languages conventions (grammar + spelling) test
- Friday March 22 – numeracy test

A great way to prepare students for these
online tests is to have them complete some
'practice' tests at this site: [https://](https://www.nap.edu.au/naplan/public-demonstration-site)

[www.nap.edu.au/naplan/public-
demonstration-site](https://www.nap.edu.au/naplan/public-demonstration-site)

DATES TO REMEMBER

Monday 11th March

- ◆ LABOUR DAY PUBLIC HOLIDAY
NO STUDENTS

Wednesday 13th March

- ◆ NAPLAN
- ◆ Sporting Schools

Thursday 14th March

- ◆ LIBRARY

Friday 15th March

- ◆ NAPLAN

Monday 18th March

- ◆ NAPLAN

Wednesday 20th March

- ◆ Café Lunch Orders
- ◆ Sporting Schools
- ◆ Bike Repair Workshop 3.45pm
- ◆ School Council AGM 7pm

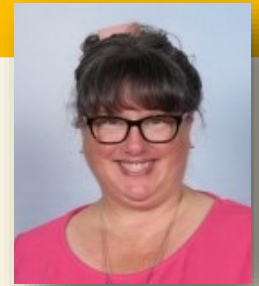
Thursday 21st March

- ◆ ART

Friday 22nd March

- ◆ NAPLAN

PRINCIPAL'S MESSAGE: Fiona Wallace



Food Fight!



Wow, we are set to have some fun on Friday March 22nd. We will be travelling to Lancaster to meet up with students there to have an afternoon of fun and fitness – whilst throwing ‘food’ and raising money for a good cause – Foodbank Victoria. Please see the attached letter for all the information you need. The ‘food’ we’ll be throwing is not food at all – it’s made from food colouring, slime, and other mucky, messy stuff. Due to the event being messy, and due to us having to travel back to school on a bus, we are asking that all students bring a spare set of clothes in a plastic bag for the event. Students will wear uniform to school, change into their spare set of casual clothes for the ‘fun’, and then change back into uniform to travel home. There will be plenty of photos so you can all see what a mess we make of ourselves!

SLEEP

I am including some facts about sleep this week, just because every now and then it helps to be reminded about the significant impact that being tired can have on all of us. Everyone is different, but as a guide, children need the following amounts of sleep every night:

- **ages 6 to 12:** 9 to 11 hours
- **ages 13 to 18:** 8 to 10 hours

Getting enough sleep is as important for your child as healthy eating and exercising. There are many and varied tips and tricks to help establish good, healthy bedtime routines. Don’t hesitate to contact me if you’d like any further information in this area.

SCIENCE

Did you know that our students are currently working on individual science projects based on Did You Know facts? As part of their project, I have asked them to

complete surveys as to whether or not people already ‘knew’ the fact before they were asked. For example, did you know that humans are the only animals that have chins? Students will ask 10 people their question, tally up how many people said ‘no, I didn’t know that’ or ‘yes, I already knew that’, and then we’re going to present our findings. Perhaps you can volunteer to be a participant in their survey.



**FROM THE
Business
Manager**

Mica will still be in the office on Tuesdays and Thursdays.

I am happy to discuss confidential payment options for fees or camps & excursions with you.

Café Lunch Orders

3rd Wednesday of every month

**20th March
17th April
15th May
19th June
17th July
21st August
18th September
16th October
20th November
18th December**

Stanhope Primary students proudly participated in Clean Up Australia Day activities on March 1 2024. Students cleaned up around the school yard, and around the entirety of the Stanhope Recreational Reserve. They worked very hard and filled their bags with rubbish and recycling.

Students made keen observations about the types of things they were finding as they walked around, and students also provided insights into why they thought that particular rubbish hadn't found its way into a bin. After filling the bags, we then sorted through 2 of them and studied in more depth exactly what gets thrown away and what ends up becoming litter. Students completed a spreadsheet and tabled their findings. They were all very proud to be a part of cleaning up our beautiful town and country!





ALERT: GET READY FOR THE FUNNEST, MESSIEST DAY EVER!

Hi Families,

We're holding a Food Fight to raise much needed funds for Foodbank Victoria and we're asking all families to take a look at the online information on how to help raise funds!

We are super excited to announce that we will be holding our event on **Friday March 22** at **Lancaster Primary School!** We will be travelling by bus, leaving Stanhope at approximately 11.00am. More details and a permission slip for the event will be sent home soon.

What is the Foodbank Food Fight?

Who doesn't love the idea of a Food Fight? Here's the chance for our entire school to engage in the naughtiest way yet* to boost school spirit and help raise vital funds for Foodbank Victoria. It's just like a school colour fun run, but so much more fun.

The Food Fight fun happens at school and the fundraising happens at home. You get to create your own online profile, set your fundraising target and then choose your target prizes. In your profile you will have a unique cyber safe link to share with your family and friends so they can donate and help get you close to your target.

Money raised will go to Foodbank Victoria so they can continue to feed 57,000 people in need, every day!

*No ACTUAL food will be harmed in the making of this event.

What do we need you to do?

All we need you to do this week is create an online profile at foodfight.com.au.

Please don't hesitate to contact me if you have any further questions.

Thank you all in advance,

Fiona Wallace
Acting Principal



STANHOPE
HEALTH



Girgarre & Stanhope BIKE REPAIR WORKSHOP

With National Ride2School Day approaching we would like to invite the Girgarre and Stanhope communities to a free bike repair workshop. Learn the basics on bike repair and maintenance to make sure you're ready to ride to school or work any day.

WED 20TH MARCH
3.45pm - 4.30pm

Stanhope Primary School
48 Midland Hwy, Stanhope

WED 20TH MARCH
5pm - 5.45pm

Girgarre Primary School
Winter Rd, Girgarre



For more information contact:
healthpromotion@kyhealth.org.au



REMINDER TO FAMILIES

2024 PERMISSION FORMS **AND STUDENT** **INFORMATION PACKS**

These were sent home in an envelope with the newsletter on 15 February.

Please doublecheck the information sheet for each student to ensure all their details are correct and sign it and return to school urgently, with the signed permission forms and agreements.



- ◆ Small caring environment.
- ◆ Individual learning plans to ensure high student outcomes.
- ◆ Engaging curriculum delivery.
- ◆ Parent involvement encouraged.

Stanhope Primary School ENROLMENTS

**Enrolments are welcome
for our school.**

Parents or carers can contact the school to speak with the principal, Christine, or to collect an enrolment pack.

School tours by appointment.



PROUDLY RUN BY LOCAL
POLICE AND VOLUNTEERS

FRI
MARCH
15TH

KYABRAM

Blue Light

CARNIVAL DISCO

BLUELIGHT.ORG.AU



KYABRAM BLUE LIGHT

6-8PM | 13 & UNDER | \$8 ENTRY

@KYABRAM SPORT STADIUM

ALLAN SREET, KYABRAM

CONTACT: MITCHELL.BULL@POLICE.VIC.GOV.AU

Kyabram Free Press



Thank you to our generous sponsors

proPAVE
landscapes

Phil De'Ath
0418 527 365

Lina Ding
0412 266 635

KYABRAMS
MAIN STREET
BUTCHERY
"The Best Meat by Miles"
170 Allan St, Kyabram PH: 5853 2123



Kyabram CLUB
Where good friends meet



- Stanhope Supermarket
- Stanhope RSL Sub Branch

DISCLAIMER: The Department of Education & Training, and Stanhope Primary School do not endorse the products or services of any private advertiser. No responsibility is accepted by the Department or the School for the accuracy of information contained in advertisements.

PROTECT

Protecting children & young people
from abuse is our responsibility



HELP IS BUT A PHONE CALL AWAY

LIFELINE
13 11 14

KID'S HELPLINE
1800 55 1800

BEYOND BLUE
1300 22 4636

AWARDS

ENVIRONMENT AWARD:

Oliver.

SPORTSMANSHIP AWARD:

Bonni.

TENNIS AWARD:

Spencer.



<https://www.facebook.com/stanhopeps/>





		<u>LOADED FRIES</u>	
		SMALL	\$ 7.50
		LARGE	\$ 11.00
		<u>BURGERS</u>	
		Bacon & Egg Roll	\$ 7.00
		Bacon & Egg Sandwich	\$ 6.50
		Chicken parma roll	\$ 12.00
		Chicken schnitzel & gravy roll	\$ 7.50
		Chicken schnitzel & salad roll	\$ 8.00
		Chicken schnitzel with the lot	\$ 12.00
		Chicken wrap with the LOT	\$ 12.00
		PLAIN	\$ 10.00
		Fish burger with the LOT	\$ 14.00
		PLAIN	\$ 12.00
		Hamburger with the LOT	\$ 12.00
		PLAIN	\$ 10.00
		Souvlaki- beef/lamb/chicken	
		LOT	\$ 12.00
		PLAIN	\$ 10.00
		Steak sandwich with the LOT	\$ 12.00
		PLAIN	\$ 10.00
		<i>Sauces- tomato, bbq, mayo, garlic, sweet chilli, hot chilli, tartare</i>	
<u>FISH 'N' CHIPS</u>			
Minimum chips	\$ 4.00		
Battered sav	\$ 3.50		
Boneless wing ding	\$ 1.50		
Calamari rings	\$ 1.50		
Chicken dim sim	\$ 2.00		
Chicken nugget	\$ 0.80		
Chiko roll	\$ 3.50		
Chilli chicken strip	\$ 2.00		
Corn jack	\$ 3.50		
Crab sticks	\$ 1.50		
Crumbed prawns	\$ 1.80		
Dim sim	\$ 1.50		
Fish bites	\$ 1.50		
Fish cakes	\$ 3.00		
<u>FISH</u>			
FLAKE	\$ 8.00	<u>EXTRAS</u>	
BLUE GRENADIER	\$ 8.00	Gravy on chips	\$ 1.00
Flat head fillets	\$ 2.00	Meat	\$ 4.00
Garlic chicken ball	\$ 1.80	Bacon or Egg	\$ 2.00
Hash brown	\$ 1.20	Cheese or Pineapple	\$ 1.00
Magdala	\$ 3.50	Squeezy sauce - per sachet	\$ 0.30
Mini dim sim	\$ 0.75	Small salad	\$ 5.00
Mini spring roll	\$ 2.00	Large salad	\$ 6.00
Pineapple fritter	\$ 3.00		
Pluto pup	\$ 3.50	<u>BAKERY</u>	
Potato cake	\$ 1.50	Plain pie	\$ 5.00
Scallops	\$ 1.80	Flavoured pie	\$ 5.50
South Melbourne dim sim	\$ 2.00	Sausage Roll	\$ 4.50
Spring roll	\$ 3.50	Pastie	\$ 4.80
Wing ding	\$ 2.50	Salad only rolls	\$ 6.00
		Meat and salad rolls	\$ 7.00
		Salad only sandwich	\$ 5.50
<u>CHIPS, CHEESE & GRAVY</u>		Meat and salad sandwich	\$ 6.50
SMALL	\$ 6.00	Salad wraps	\$ 7.00
MEDIUM	\$ 9.00	Salad Tubs Small	\$ 5.00
LARGE	\$ 12.00	Salad Tubs Large	\$ 6.00
		Fruit Tub Small Term 1 & 4 only	\$ 4.00
<i>Tomato sauce sachet</i>	\$ 0.30	Fruit Tub Large Term 1 & 4 only	\$ 5.00

Child safety and wellbeing at Stanhope Primary School

information for families and the school community

The Victorian Government has announced new [Child Safe Standards](#) to further strengthen child safety across organisations, including schools. The new standards recognise the critical importance of families and the broader school community in maintaining and promoting child safety and wellbeing.

Stanhope Primary School has reviewed and updated our child safety policies and procedures to ensure they meet the requirements of the new standards. These are available to view our school's website, via UeducateUs, and at the school's front office].

We are committed to continuous improvement in our approach to child safety and wellbeing and welcome feedback from families and members of our school community on ways we can further strengthen our child safety policies, procedures and practices.

If you have any suggestions, comments or questions, please contact Stanhope Primary School at stanhope.ps@education.vic.gov.au or by phone on 03 5857 2514.

Victoria's Child Safe Standards

- **Child Safe Standard 1** – Establish a culturally safe environment in which the diverse and unique identities and experiences of Aboriginal children and young people are respected and valued.
- **Child Safe Standard 2** – Ensure that child safety and wellbeing are embedded in school leadership, governance and culture.
- **Child Safe Standard 3** – Children and young people are empowered about their rights, participate in decisions affecting them and are taken seriously.
- **Child Safe Standard 4** – Families and communities are informed and involved in promoting child safety and wellbeing.
- **Child Safe Standard 5** – Equity is upheld and diverse needs are respected in policy and practice.
- **Child Safe Standard 6** – People working with children and young people are suitable and supported to reflect child safety and wellbeing values in practice.
- **Child Safe Standard 7** – Ensure that processes for complaints and concerns are child focused.
- **Child Safe Standard 8** – Staff and volunteers are equipped with the knowledge, skills and awareness to keep children and young people safe through ongoing education and training.
- **Child Safe Standard 9** – Physical and online environments promote safety and wellbeing while minimising the opportunity for children and young people to be harmed.
- **Child Safe Standard 10** – Implementation of the Child Safe Standards is regularly reviewed and improved.
- **Child Safe Standard 11** – Policies and procedures that document how schools are safe for children, young people and students.
- Ministerial Order 1359 provides the framework for child safety in schools.

FOUR CRITICAL ACTIONS FOR SCHOOLS

Responding to Incidents, Disclosures and Suspicions of Child Abuse

1 RESPONDING TO AN EMERGENCY

If there is no risk of immediate harm go to **Action 2**

If a child is at immediate risk of harm you **must** ensure their safety by:

- separating alleged victims and others involved
- administering first aid
- calling **000** for urgent medical and/or police assistance to respond to immediate health or safety concerns
- identifying a contact person at the school for future liaison with Police.

Where necessary you may also need to maintain the integrity of the potential crime scene and preserve evidence.

2 REPORTING TO AUTHORITIES / REFERRING TO SERVICES

As soon as immediate health and safety concerns are addressed you **must** report all incidents, suspicions and disclosures of child abuse as soon as possible. Failure to report physical and sexual child abuse may amount to a criminal offence.

Q: Where does the source of suspected abuse come from?

WITHIN THE SCHOOL

VICTORIA POLICE
You **must** report all instances of suspected child abuse involving a school staff member, contractor, volunteer or visitor to Victoria Police.

You **must also** report internally to:

- GOVERNMENT SCHOOLS**
 - School principal and/or leadership team
 - Employee Conduct Branch
 - DET Incident Support and Operations Centre.
- CATHOLIC SCHOOLS**
 - School principal and/or leadership team
 - Diocesan education office.
- INDEPENDENT SCHOOLS**
 - School principal and/or school chairperson
 - Commission for Children and Young People on **1300 782 978**

All allegations of 'reportable conduct' **must** be reported as soon as possible to:

- GOVERNMENT SCHOOLS**
 - Employee Conduct Branch
- CATHOLIC SCHOOLS**
 - Diocesan education office
- INDEPENDENT SCHOOLS**
 - Commission for Children and Young People on **1300 782 978**.

WITHIN THE FAMILY OR COMMUNITY

DHHS CHILD PROTECTION
You **must** report to DHHS Child Protection if a child is considered to be:

- in need of protection from child abuse
- at risk of being harmed (or has been harmed) and the harm has had, or is likely to have, a serious impact on the child's safety, stability or development.

VICTORIA POLICE

You **must also** report all instances of suspected sexual abuse (including grooming) to Victoria Police.

You **must also** report internally to:

- GOVERNMENT SCHOOLS**
 - School principal and/or leadership team
 - DET Incident Support and Operations Centre.
- CATHOLIC SCHOOLS**
 - School principal and/or leadership team
 - Diocesan education office.
- INDEPENDENT SCHOOLS**
 - School principal and/or chairperson.

YOU MUST TAKE ACTION

You **must** act, by following the Four Critical Actions, as soon as you witness an incident, receive a disclosure or form a reasonable belief* that a child has, or is at risk of being abused.

As a school staff member, you play a **critical role** in protecting children in your care.

You **must** act if you form a suspicion or reasonable belief, even if you are unsure and have not directly observed child abuse (e.g. if the victim or another person tells you about the abuse).

It is strongly recommended that you use the **Responding to Suspected Child Abuse template** to keep clear and comprehensive notes, even if you make a decision not to report.

*A reasonable belief is a deliberately low threshold. This enables authorities to investigate and take action.

3 CONTACTING PARENTS/CARERS

Your principal **must** consult with DHHS Child Protection or Victoria Police to determine what information can be shared with parents/carers. They may advise:

- not to contact** the parents/carer (e.g. in circumstances where the parents are alleged to have engaged in the abuse, or the child is a mature minor and does not wish for their parent/carer to be contacted)
- to contact** the parents/carers and provide agreed information (this must be done as soon as possible, preferably on the same day of the incident, disclosure or suspicion)
- how to communicate** with all relevant parties with consideration for their safety.

4 PROVIDING ONGOING SUPPORT

Your school **must** provide support for children impacted by abuse. This should include the development of a **Student Support Plan** in consultation with wellbeing professionals. This is an essential part of your duty of care requirements.

Strategies may include development of a safety plan, direct support and referral to wellbeing professionals and support.

You **must** follow the **Four Critical Actions** every time you become aware of a further instance or risk of abuse. This includes reporting new information to authorities.

CONTACT

DHHS CHILD PROTECTION

AREA
North Division **1300 664 977**
South Division **1300 655 795**
East Division **1300 300 391**
West Division (Rural) **1800 075 599**
West Division (Metro) **1300 664 977**

AFTER HOURS

After hours, weekends, public holidays **13 12 78**

CHILD FIRST

<https://services.dhhs.vic.gov.au/federal-and-support-teams>

ORANGE DOOR

<https://www.vic.gov.au/familyviolence/the-orange-door.html>

VICTORIA POLICE

000 or your local police station

DET INCIDENT SUPPORT AND OPERATIONS CENTRE

1800 126 126

INCIDENT MANAGEMENT AND SUPPORT UNIT

1800 126 126

EMPLOYEE CONDUCT BRANCH

(03) 9637 2595

DIOCESAN OFFICE

Melbourne (03) 9267 0228
Ballarat (03) 5337 7135
Sale (03) 5622 8600
Sandhurst (03) 5443 2377

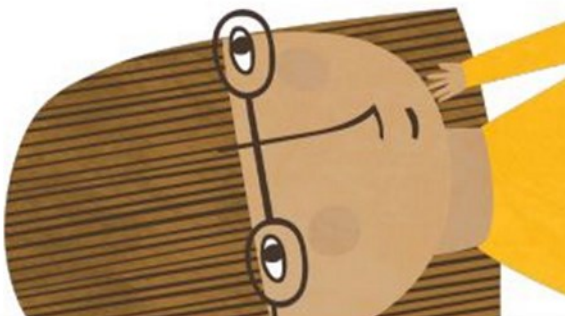
INDEPENDENT SCHOOLS

VICTORIA
(03) 9825 7200

THE LOOKOUT

The LOOKOUT has a service directory, information, and evidence based guidance to help you respond to family violence: <http://www.lookout.org.au>

Family violence victims/survivors can be referred to **1800 Respect** for counselling, information and a referral service: **1800 737 732**



PROTECT

THE EDUCATION STATE

VICTORIA
Education and Training

CECV
CHILD EDUCATION COMMUNITY CONNECTIONS

