



Stanhope Primary School

Learning • Success • Respect • Citizenship



Principal: Christine Owen

Phone: 03 5857 2514

Mobile: 0419 548 318

Email: stanhope.ps@education.vic.gov.au

Newsletter

48 Midland Highway

PO Box 19

Stanhope, Victoria 3623

<http://stanhopeps.vic.edu.au>

Inspiring Lifelong Learning

ISSUE 7: March 14th 2024

REMINDERS & THINGS TO DO

DATES TO REMEMBER

Stanhope Primary School **SCHOOL COUNCIL**

Our AGM will be held on
Wednesday 20th March 2024
at 7pm after the Finance Meeting at
6.30pm.

*All school councillors are requested
to attend if possible please*

TEAMS TENNIS

On Wednesday 27th March our 3-6 students will be participating in a teams tennis competition in Echuca against students from other schools. The day will be about fun and will be a hot shots style format, with racquets provided. No previous tennis experience is required and Sheree has been helping our students prepare for the day during sport sessions.

We will need parent helpers to help transport students to and from the event. If you can help please contact Mrs De Pasquale.

Friday 15th March

- ◆ NAPLAN

Monday 18th March

- ◆ NAPLAN

Wednesday 20th March

- ◆ Café Lunch Orders
- ◆ Sporting Schools
- ◆ Bike Repair Workshop 3.45pm
- ◆ School Council AGM 7pm

Thursday 21st March

- ◆ ART

Friday 22nd March

- ◆ NAPLAN
- ◆ Excursion Food Fight at Lancaster Primary School

Wednesday 27th March

- ◆ Sporting Schools
- ◆ Excursion Teams Tennis Echuca

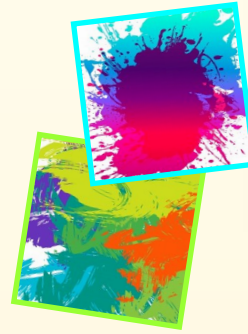
Thursday 28th March

- ◆ END OF TERM
- ◆ Assembly 2.00pm
- ◆ Early Dismissal 2.15pm

PRINCIPAL'S MESSAGE: Fiona Wallace

FOOD FIGHT!!!

Don't forget we have our Food Fight excursion coming up next **Friday March 22nd**. Please use the link provided in last week's newsletter to make your student an account so they can send it out to help raise funds for Foodbank Victoria. Please find permission slips attached to this newsletter – we're going to have so much FUN! Lancaster Primary School are providing us with sausages and drinks at lunchtime, so you only need to pack snacks. Also, please remember to pack an entire set of casual/old clothes for your student to change into – even shoes please – as we'll be getting very messy!



NAPLAN

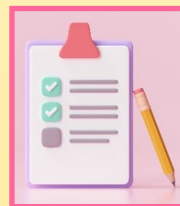
Our NAPLAN testing is continuing next week for students in Grades 3 and 5. All tests will begin at 9.00am on each of the following days:

- ◆ Friday March 15 - reading test
- ◆ Monday March 18 – languages conventions (grammar + spelling) test
- ◆ Friday March 22 – numeracy test

I would like to congratulate Daisy, Cooper, Bonni and Xyla, for doing a great job of their writing test earlier this week. I spoke last week in class about ensuring that students are prepared to do their best by ensuring they get enough sleep the night before and that they eat a good breakfast that morning. The students also discussed what helps them right before the test – so we had colouring-in, time to relax and settle, and some physical activity like running around the oval. Knowing what works best for you as an individual is often referred to as having a 'Testing Toolkit' and I encourage you to discuss this with your students at home. I want students to feel comfortable and confident.

SURVEYS

With only three short weeks to go, I am starting to feel sad about ending my role here, however I am also feeling very happy that I was lucky enough to spend time in such a warm, kind, supportive community of students, parents, and staff. I will visit whenever I get the chance! I mention my departure because before I go, I would like to ask each of you to complete a short survey about our school. It's imperative that we gain feedback from you about things like our programs and activities, what you think have been highlights over your student's time here, and what you feel you'd like to change or improve. I will ensure that these surveys are available online and I'll provide you with a link. Alternatively, I will have paper copies here at school for you to complete and would like to invite you to stay around **after assembly this week and next week** and spend 5-10 minutes completing a hard copy.



FROM THE
**Business
Manager**

Mica will still be in the office on Tuesdays and Thursdays.

I am happy to discuss confidential payment options for fees or camps & excursions with you.

Café Lunch Orders

**3rd Wednesday
of every month**

20th March
17th April
15th May
19th June
17th July
21st August
18th September
16th October
20th November
18th December



ALERT: GET READY FOR THE FUNNEST, MESSIEST DAY EVER!

Hi Families,

We're holding a Food Fight to raise much needed funds for Foodbank Victoria and we're asking all families to take a look at the online information on how to help raise funds!

We are super excited to announce that we will be holding our event on **Friday March 22** at **Lancaster Primary School!** We will be travelling by bus, leaving Stanhope at approximately 11.00am. More details and a permission slip for the event will be sent home soon.

What is the Foodbank Food Fight?

Who doesn't love the idea of a Food Fight? Here's the chance for our entire school to engage in the naughtiest way yet* to boost school spirit and help raise vital funds for Foodbank Victoria. It's just like a school colour fun run, but so much more fun.

The Food Fight fun happens at school and the fundraising happens at home. You get to create your own online profile, set your fundraising target and then choose your target prizes. In your profile you will have a unique cyber safe link to share with your family and friends so they can donate and help get you close to your target.

Money raised will go to Foodbank Victoria so they can continue to feed 57,000 people in need, every day!

*No ACTUAL food will be harmed in the making of this event.

What do we need you to do?

All we need you to do this week is create an online profile at foodfight.com.au.

Please don't hesitate to contact me if you have any further questions.

Thank you all in advance,

Fiona Wallace
Acting Principal



STANHOPE
HEALTH



Girgarre & Stanhope BIKE REPAIR WORKSHOP

With National Ride2School Day approaching we would like to invite the Girgarre and Stanhope communities to a free bike repair workshop. Learn the basics on bike repair and maintenance to make sure you're ready to ride to school or work any day.

WED 20TH MARCH
3.45pm - 4.30pm

Stanhope Primary School
48 Midland Hwy, Stanhope

WED 20TH MARCH
5pm - 5.45pm

Girgarre Primary School
Winter Rd, Girgarre



For more information contact:
healthpromotion@kyhealth.org.au



REMINDER TO FAMILIES

2024 PERMISSION FORMS **AND STUDENT** **INFORMATION PACKS**

These were sent home in an envelope with the newsletter on 15 February.

Please doublecheck the information sheet for each student to ensure all their details are correct and sign it and return to school urgently, with the signed permission forms and agreements.



- ◆ Small caring environment.
- ◆ Individual learning plans to ensure high student outcomes.
- ◆ Engaging curriculum delivery.
- ◆ Parent involvement encouraged.

Stanhope Primary School ENROLMENTS

**Enrolments are welcome
for our school.**

Parents or carers can contact the school to speak with the principal, Christine, or to collect an enrolment pack.

School tours by appointment.

Thank you to our generous sponsors

proPAVE
landscapes

Phil De'Ath
0418 527 365

Lina Ding
0412 266 635

KYABRAMS
MAIN STREET
BUTCHERY

"The Best Meat by Miles"

170 Allan St, Kyabram PH: 5853 2123



Kyabram CLUB
Where good friends meet



- Stanhope Supermarket
- Stanhope RSL Sub Branch

DISCLAIMER: The Department of Education & Training, and Stanhope Primary School do not endorse the products or services of any private advertiser. No responsibility is accepted by the Department or the School for the accuracy of information contained in advertisements.

PROTECT

Protecting children & young people
from abuse is our responsibility



HELP IS BUT A PHONE CALL AWAY

LIFELINE
13 11 14

KID'S HELPLINE
1800 55 1800

BEYOND BLUE
1300 22 4636

AWARDS

SUPERSTAR AWARD:

Caleb and Cooper.

HANDWRITING AWARD:

Diamond-Rose.



<https://www.facebook.com/stanhopeps/>





		<u>LOADED FRIES</u>	
		SMALL	\$ 7.50
		LARGE	\$ 11.00
		<u>BURGERS</u>	
		Bacon & Egg Roll	\$ 7.00
		Bacon & Egg Sandwich	\$ 6.50
		Chicken parma roll	\$ 12.00
		Chicken schnitzel & gravy roll	\$ 7.50
		Chicken schnitzel & salad roll	\$ 8.00
		Chicken schnitzel with the lot	\$ 12.00
		Chicken wrap with the LOT	\$ 12.00
		PLAIN	\$ 10.00
		Fish burger with the LOT	\$ 14.00
		PLAIN	\$ 12.00
		Hamburger with the LOT	\$ 12.00
		PLAIN	\$ 10.00
		Souvlaki- beef/lamb/chicken	
		LOT	\$ 12.00
		PLAIN	\$ 10.00
		Steak sandwich with the LOT	\$ 12.00
		PLAIN	\$ 10.00
		<i>Sauces- tomato, bbq, mayo, garlic, sweet chilli, hot chilli, tartare</i>	
<u>FISH 'N' CHIPS</u>			
Minimum chips	\$ 4.00		
Battered sav	\$ 3.50		
Boneless wing ding	\$ 1.50		
Calamari rings	\$ 1.50		
Chicken dim sim	\$ 2.00		
Chicken nugget	\$ 0.80		
Chiko roll	\$ 3.50		
Chilli chicken strip	\$ 2.00		
Corn jack	\$ 3.50		
Crab sticks	\$ 1.50		
Crumbed prawns	\$ 1.80		
Dim sim	\$ 1.50		
Fish bites	\$ 1.50		
Fish cakes	\$ 3.00		
<u>FISH</u>			
FLAKE	\$ 8.00		
BLUE GRENADIER	\$ 8.00		
Flat head fillets	\$ 2.00		
Garlic chicken ball	\$ 1.80		
Hash brown	\$ 1.20		
Magdala	\$ 3.50		
Mini dim sim	\$ 0.75		
Mini spring roll	\$ 2.00		
Pineapple fritter	\$ 3.00		
Pluto pup	\$ 3.50		
Potato cake	\$ 1.50		
Scallops	\$ 1.80		
South Melbourne dim sim	\$ 2.00		
Spring roll	\$ 3.50		
Wing ding	\$ 2.50		
<u>CHIPS, CHEESE & GRAVY</u>			
SMALL	\$ 6.00		
MEDIUM	\$ 9.00		
LARGE	\$ 12.00		
<i>Tomato sauce sachet</i>		\$ 0.30	
		<u>EXTRAS</u>	
		Gravy on chips	\$ 1.00
		Meat	\$ 4.00
		Bacon or Egg	\$ 2.00
		Cheese or Pineapple	\$ 1.00
		Squeezy sauce - per sachet	\$ 0.30
		Small salad	\$ 5.00
		Large salad	\$ 6.00
		<u>BAKERY</u>	
		Plain pie	\$ 5.00
		Flavoured pie	\$ 5.50
		Sausage Roll	\$ 4.50
		Pastie	\$ 4.80
		Salad only rolls	\$ 6.00
		Meat and salad rolls	\$ 7.00
		Salad only sandwich	\$ 5.50
		Meat and salad sandwich	\$ 6.50
		Salad wraps	\$ 7.00
		Salad Tubs Small	\$ 5.00
		Salad Tubs Large	\$ 6.00
		Fruit Tub Small Term 1 & 4 only	\$ 4.00
		Fruit Tub Large Term 1 & 4 only	\$ 5.00

Child safety and wellbeing at Stanhope Primary School

information for families and the school community

The Victorian Government has announced new [Child Safe Standards](#) to further strengthen child safety across organisations, including schools. The new standards recognise the critical importance of families and the broader school community in maintaining and promoting child safety and wellbeing.

Stanhope Primary School has reviewed and updated our child safety policies and procedures to ensure they meet the requirements of the new standards. These are available to view our school's website, via UeducateUs, and at the school's front office].

We are committed to continuous improvement in our approach to child safety and wellbeing and welcome feedback from families and members of our school community on ways we can further strengthen our child safety policies, procedures and practices.

If you have any suggestions, comments or questions, please contact Stanhope Primary School at stanhope.ps@education.vic.gov.au or by phone on 03 5857 2514.

Victoria's Child Safe Standards

- **Child Safe Standard 1** – Establish a culturally safe environment in which the diverse and unique identities and experiences of Aboriginal children and young people are respected and valued.
- **Child Safe Standard 2** – Ensure that child safety and wellbeing are embedded in school leadership, governance and culture.
- **Child Safe Standard 3** – Children and young people are empowered about their rights, participate in decisions affecting them and are taken seriously.
- **Child Safe Standard 4** – Families and communities are informed and involved in promoting child safety and wellbeing.
- **Child Safe Standard 5** – Equity is upheld and diverse needs are respected in policy and practice.
- **Child Safe Standard 6** – People working with children and young people are suitable and supported to reflect child safety and wellbeing values in practice.
- **Child Safe Standard 7** – Ensure that processes for complaints and concerns are child focused.
- **Child Safe Standard 8** – Staff and volunteers are equipped with the knowledge, skills and awareness to keep children and young people safe through ongoing education and training.
- **Child Safe Standard 9** – Physical and online environments promote safety and wellbeing while minimising the opportunity for children and young people to be harmed.
- **Child Safe Standard 10** – Implementation of the Child Safe Standards is regularly reviewed and improved.
- **Child Safe Standard 11** – Policies and procedures that document how schools are safe for children, young people and students.
- Ministerial Order 1359 provides the framework for child safety in schools.

FOUR CRITICAL ACTIONS FOR SCHOOLS

Responding to Incidents, Disclosures and Suspicions of Child Abuse

1 RESPONDING TO AN EMERGENCY

If there is no risk of immediate harm go to **Action 2**

If a child is at immediate risk of harm you **must** ensure their safety by:

- separating alleged victims and others involved
- administering first aid
- calling **000** for urgent medical and/or police assistance to respond to immediate health or safety concerns
- identifying a contact person at the school for future liaison with Police.

Where necessary you may also need to maintain the integrity of the potential crime scene and preserve evidence.

2 REPORTING TO AUTHORITIES / REFERRING TO SERVICES

As soon as immediate health and safety concerns are addressed you **must** report all incidents, suspicions and disclosures of child abuse as soon as possible. Failure to report physical and sexual child abuse may amount to a criminal offence.

Q: Where does the source of suspected abuse come from?

WITHIN THE SCHOOL

VICTORIA POLICE
You **must** report all instances of suspected child abuse involving a school staff member, contractor, volunteer or visitor to Victoria Police.

You **must also** report internally to:

- GOVERNMENT SCHOOLS**
 - School principal and/or leadership team
 - Employee Conduct Branch
 - DET Incident Support and Operations Centre.
- CATHOLIC SCHOOLS**
 - School principal and/or leadership team
 - Diocesan education office.
- INDEPENDENT SCHOOLS**
 - School principal and/or school chairperson
 - Commission for Children and Young People on **1300 782 978**

All allegations of 'reportable conduct' **must** be reported as soon as possible to:

- GOVERNMENT SCHOOLS**
 - Employee Conduct Branch
- CATHOLIC SCHOOLS**
 - Diocesan education office
- INDEPENDENT SCHOOLS**
 - Commission for Children and Young People on **1300 782 978**.

OTHER CONCERNS

If you believe that a child is not subject to abuse, but you still hold **significant concerns** for their wellbeing you **must** still act. This may include making a referral or seeking advice from:

- Child FIRST/The Orange Door (in circumstances where the family are open to receiving support)
- DHHS Child Protection
- Victoria Police.

3 CONTACTING PARENTS/CARERS

Your principal **must** consult with DHHS Child Protection or Victoria Police to determine what information can be shared with parents/carers. They may advise:

- not to contact** the parents/carer (e.g. in circumstances where the parents are alleged to have engaged in the abuse, or the child is a mature minor and does not wish for their parent/carer to be contacted)
- to contact** the parents/carers and provide agreed information (this must be done as soon as possible, preferably on the same day of the incident, disclosure or suspicion)
- how to communicate** with all relevant parties with consideration for their safety.

4 PROVIDING ONGOING SUPPORT

Your school **must** provide support for children impacted by abuse. This should include the development of a **Student Support Plan** in consultation with wellbeing professionals. This is an essential part of your duty of care requirements.

Strategies may include development of a safety plan, direct support and referral to wellbeing professionals and support.

You **must** follow the **Four Critical Actions** every time you become aware of a further instance or risk of abuse. This includes reporting new information to authorities.

YOU MUST TAKE ACTION

You **must** act, by following the Four Critical Actions, as soon as you witness an incident, receive a disclosure or form a reasonable belief* that a child has, or is at risk of being abused.

As a school staff member, you play a **critical role** in protecting children in your care.

You **must** act if you form a suspicion or reasonable belief, even if you are unsure and have not directly observed child abuse (e.g. if the victim or another person tells you about the abuse).

*A reasonable belief is a deliberately low threshold. This enables authorities to investigate and take action.

CONTACT

DHHS CHILD PROTECTION

AREA
North Division **1300 664 977**
South Division **1300 655 795**
East Division **1300 300 391**
West Division (Rural) **1800 075 599**
West Division (Metro) **1300 664 977**

AFTER HOURS

After hours, weekends, public holidays **13 12 78**

CHILD FIRST

<https://services.dhhs.vic.gov.au/federal-and-support-teams>

ORANGE DOOR

<https://www.vic.gov.au/familyviolence/the-orange-door.html>

VICTORIA POLICE

000 or your local police station

DET INCIDENT SUPPORT AND OPERATIONS CENTRE

1800 126 126

INCIDENT MANAGEMENT AND SUPPORT UNIT

1800 126 126

EMPLOYEE CONDUCT BRANCH

(03) 9637 2595

DIOCESAN OFFICE

Melbourne **(03) 9267 0228**

Ballarat **(03) 5337 7135**

Sale **(03) 5622 8600**

Sandhurst **(03) 5443 2377**

INDEPENDENT SCHOOLS

VICTORIA (03) 9825 7200

THE LOOKOUT

The LOOKOUT has a service directory, information, and evidence based guidance to help you respond to family violence: <http://www.lookout.org.au>

Family violence victims/survivors can be referred to **1800 Respect** for counselling, information and a referral service: **1800 737 732**

PROTECT

THE EDUCATION STATE

VICTORIA Education and Training

CECV

Department of Education and Training