



Stanhope Primary School

Learning • Success • Respect • Citizenship



Principal: Christine Owen

Phone: 03 5857 2514

Mobile: 0419 548 318

Email: stanhope.ps@education.vic.gov.au

Newsletter

48 Midland Highway

PO Box 19

Stanhope, Victoria 3623

<http://stanhopeps.vic.edu.au>

Inspiring Lifelong Learning

ISSUE 3: February 15th 2024

REMINDERS & THINGS TO DO

Please ensure that students come to school each day with a:

- ◆ **DRINK BOTTLE**
 - ◆ **SCHOOL HAT**
- so they can play outside.



**YES
OUTDOOR
PLAY**



**NO
OUTDOOR
PLAY**

SCHOOL COUNCIL

Our first School Council meeting for the year is on Wednesday 21st February at 7pm in the staff room. Finance meeting at 6.30pm

Our AGM will be held on Wednesday 20th March 2024 at 7pm.

There is 1 parent vacancy.

A nomination form is attached to this newsletter if you would like to be an integral part of our team.

DATES TO REMEMBER

Wednesday 21st February

- ◆ No prep students at school
- ◆ Sporting Schools
- ◆ Café Lunch Orders
- ◆ School Council 7pm and Finance Meeting 6.30pm

Thursday 22nd February

- ◆ ART

Wednesday 28th February

- ◆ Prep students at school on Wednesdays from today
- ◆ Sporting Schools

Thursday 29th February

- ◆ LIBRARY

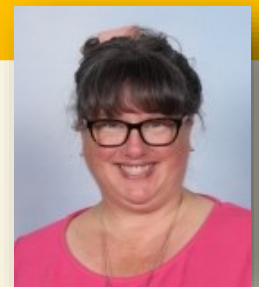
REMINDER TO FAMILIES

- ◆ Library Bags are being decorated in Art.
- ◆ Students are strongly encouraged to bring drink bottles with water to school.

PRINCIPAL'S MESSAGE: Fiona Wallace

New team members—Welcome!

Week three of term has been a busy one. It's been a week full of fun, settling into routines, and working together as a team – both for the students and we as a staff. I would like to take this opportunity to welcome Ms. Allison Whitney. Ms Whitney will be here for two mornings each week as our resident Tutor and will work with individuals and small groups. Another familiar person rejoining our team is Ms Jody Watkins. Jody is starting work next week and will be continuing her work in the classroom in an Educational Support role. Welcome!



Wellbeing Works

Over the coming weeks I will be inviting families and students to attend individual 'Wellbeing Works' meetings with myself and our resident Wellbeing Officer, Simon. These meetings will serve a number of purposes; our main focus will be the wellbeing and learning needs of our students. I am looking forward to meeting with you and will be calling all families in due course to schedule convenient times. These meetings will be happening on Tuesdays, so if there is a specific Tuesday that you'd like to book in for your meeting, please call me to arrange a time. I would like to share something I read recently about student wellbeing:

Wellbeing positively influences student learning outcomes, and success in learning enhances student wellbeing.

Wellbeing is a multi-faceted concept involving much more than just physical health. It's a combination of a person's emotional, mental and social health and it also reflects how they feel about themselves and their life in general. Wellbeing is linked to improved academic achievement, enhanced mental health and responsible life choices. Helping students to feel connected and engaged in their learning will enable students to develop the social and emotional skills to grow into happy, respectful, well-balanced and successful members of their school and wider community.

Reading

This week we have started to send home some information about our reading program and we'll continue to keep you informed about how best to support your student at home with their learning. It's essential that your student finds reading material that they are interested in and it's also important for them to be reading at home for at least 15 minutes every day.

What are you reading at the moment? I have just finished reading a novel called "Homecoming" by Kate Morton. I thoroughly enjoyed it and found that I could recognise myself in some of the characters as they faced issues about family, connectedness, parenting, and heritage. I would recommend it and am always happy to loan books if anyone is interested.



FROM THE
Business
Manager

Mica will still be in the office on Tuesdays and Thursdays.

I am happy to discuss confidential payment options for fees or camps & excursions with you.

Café Lunch Orders

3rd Wednesday of every month

21st February
20th March
17th April
15th May
19th June
17th July
21st August
18th September
16th October
20th November
18th December

REMINDER TO FAMILIES

STUDENT REQUISITES FOR SCHOOL

There is a list of items on page 13 of the newsletter that families need to provide for students. Some students do not have pencil cases.



Girgarre & Stanhope BIKE REPAIR WORKSHOP

With National Ride2School Day approaching we would like to invite the Girgarre and Stanhope communities to a free bike repair workshop. Learn the basics on bike repair and maintenance to make sure you're ready to ride to school or work any day.

**WED 20TH MARCH
3.45pm - 4.30pm**

**Stanhope Primary School
48 Midland Hwy, Stanhope**

**WED 20TH MARCH
5pm - 5.45pm**

**Girgarre Primary School
Winter Rd, Girgarre**



For more information contact:
healthpromotion@kyhealth.org.au



Thank you to our generous sponsors

proPAVE
landscapes

Phil De'Ath
0418 527 365

Lina Ding
0412 266 635

KYABRAMS
MAIN STREET
BUTCHERY

"The Best Meat by Miles"

170 Allan St, Kyabram PH: 5853 2123



Kyabram CLUB
Where good friends meet



- Stanhope Supermarket
- Stanhope RSL Sub Branch

DISCLAIMER: The Department of Education & Training, and Stanhope Primary School do not endorse the products or services of any private advertiser. No responsibility is accepted by the Department or the School for the accuracy of information contained in advertisements.

PROTECT

Protecting children & young people
from abuse is our responsibility



HELP IS BUT A PHONE CALL AWAY

LIFELINE

13 11 14

KID'S HELPLINE

1800 55 1800

BEYOND BLUE

1300 22 4636

AWARDS

HELPER AWARD: Xyla.

ENVIRONMENT AWARD:

Cass & Tyler.

GOOD LISTENING:

Diamond-Rose.

**GOOD MANNERS
AWARD:**

Cass, Caleb, Lily, Diamond

-Rose, Xyla, Mercedes, Bonni, Spencer, Cooper, Daisy & Tyler.

GOOD MANNERS AWARD: Cass, Caleb, Cooper, & Tyler.



<https://www.facebook.com/stanhopeps/>



Child safety and wellbeing at Stanhope Primary School

information for families and the school community

The Victorian Government has announced new [Child Safe Standards](#) to further strengthen child safety across organisations, including schools. The new standards recognise the critical importance of families and the broader school community in maintaining and promoting child safety and wellbeing.

Stanhope Primary School has reviewed and updated our child safety policies and procedures to ensure they meet the requirements of the new standards. These are available to view our school's website, via UeducateUs, and at the school's front office].

We are committed to continuous improvement in our approach to child safety and wellbeing and welcome feedback from families and members of our school community on ways we can further strengthen our child safety policies, procedures and practices.

If you have any suggestions, comments or questions, please contact Stanhope Primary School at stanhope.ps@education.vic.gov.au or by phone on 03 5857 2514.

Victoria's Child Safe Standards

- **Child Safe Standard 1** – Establish a culturally safe environment in which the diverse and unique identities and experiences of Aboriginal children and young people are respected and valued.
- **Child Safe Standard 2** – Ensure that child safety and wellbeing are embedded in school leadership, governance and culture.
- **Child Safe Standard 3** – Children and young people are empowered about their rights, participate in decisions affecting them and are taken seriously.
- **Child Safe Standard 4** – Families and communities are informed and involved in promoting child safety and wellbeing.
- **Child Safe Standard 5** – Equity is upheld and diverse needs are respected in policy and practice.
- **Child Safe Standard 6** – People working with children and young people are suitable and supported to reflect child safety and wellbeing values in practice.
- **Child Safe Standard 7** – Ensure that processes for complaints and concerns are child focused.
- **Child Safe Standard 8** – Staff and volunteers are equipped with the knowledge, skills and awareness to keep children and young people safe through ongoing education and training.
- **Child Safe Standard 9** – Physical and online environments promote safety and wellbeing while minimising the opportunity for children and young people to be harmed.
- **Child Safe Standard 10** – Implementation of the Child Safe Standards is regularly reviewed and improved.
- **Child Safe Standard 11** – Policies and procedures that document how schools are safe for children, young people and students.
- Ministerial Order 1359 provides the framework for child safety in schools.

FOUR CRITICAL ACTIONS FOR SCHOOLS

Responding to Incidents, Disclosures and Suspicions of Child Abuse

1 RESPONDING TO AN EMERGENCY

If there is no risk of immediate harm go to **Action 2**

If a child is at immediate risk of harm you **must** ensure their safety by:

- separating alleged victims and others involved
- administering first aid
- calling **000** for urgent medical and/or police assistance to respond to immediate health or safety concerns
- identifying a contact person at the school for future liaison with Police.

Where necessary you may also need to maintain the integrity of the potential crime scene and preserve evidence.

2 REPORTING TO AUTHORITIES / REFERRING TO SERVICES

As soon as immediate health and safety concerns are addressed you **must** report all incidents, suspicions and disclosures of child abuse as soon as possible. Failure to report physical and sexual child abuse may amount to a criminal offence.

Q: Where does the source of suspected abuse come from?

WITHIN THE SCHOOL

VICTORIA POLICE
You **must** report all instances of suspected child abuse involving a school staff member, contractor, volunteer or visitor to Victoria Police.

You **must also** report internally to:

- **GOVERNMENT SCHOOLS**
School principal and/or leadership team
- Employee Conduct Branch
- DET Incident Support and Operations Centre
- **CATHOLIC SCHOOLS**
School principal and/or leadership team
- Diocesan education office.

INDEPENDENT SCHOOLS

- School principal and/or school chairperson
- Commission for Children and Young People on **1300 782 978**

All allegations of 'reportable conduct' **must** be reported as soon as possible to:

- **GOVERNMENT SCHOOLS**
Employee Conduct Branch
- **CATHOLIC SCHOOLS**
Diocesan education office
- **INDEPENDENT SCHOOLS**
Commission for Children and Young People on **1300 782 978**.

OTHER CONCERNS

If you believe that a child is not subject to abuse, but you still hold **significant concerns** for their wellbeing you **must** still act. This may include making a referral or seeking advice from:

- Child FIRST/The Orange Door (in circumstances where the family are open to receiving support)
- DHS Child Protection
- Victoria Police.

3 CONTACTING PARENTS/CARERS

Your principal **must** consult with DHS Child Protection or Victoria Police to determine what information can be shared with parents/carers. They may advise:

- **not to contact** the parents/carer (e.g. in circumstances where the parents are alleged to have engaged in the abuse, or the child is a mature minor and does not wish for their parent/carer to be contacted)
- **to contact** the parents/carers and provide agreed information (this must be done as soon as possible, preferably on the same day of the incident, disclosure or suspicion)
- **how to communicate** with all relevant parties with consideration for their safety.

4 PROVIDING ONGOING SUPPORT

Your school **must** provide support for children impacted by abuse. This should include the development of a **Student Support Plan** in consultation with wellbeing professionals. This is an essential part of your duty of care requirements.

Strategies may include development of a safety plan, direct support and referral to wellbeing professionals and support.

You **must** follow the **Four Critical Actions** every time you become aware of a further instance or risk of abuse. This includes reporting new information to authorities.

YOU MUST TAKE ACTION

You **must** act, by following the Four Critical Actions, as soon as you witness an incident, receive a disclosure or form a reasonable belief* that a child has, or is at risk of being abused.

As a school staff member, you play a **critical role** in protecting children in your care.

You **must** act if you form a suspicion or reasonable belief, even if you are unsure and have not directly observed child abuse (e.g. if the victim or another person tells you about the abuse).

It is strongly recommended that you use the **Responding to Suspected Child Abuse template** to keep clear and comprehensive notes, even if you make a decision not to report.

*A reasonable belief is a deliberately low threshold. This enables authorities to investigate and take action.

CONTACT

DHHS CHILD PROTECTION

- AREA
North Division **1300 664 977**
South Division **1300 655 795**
East Division **1300 300 391**
West Division (Rural) **1800 075 599**
West Division (Metro) **1300 664 977**

AFTER HOURS

After hours, weekends, public holidays **13 12 78**

CHILD FIRST

<https://services.dhhs.vic.gov.au/federal-and-support-teams>

ORANGE DOOR

<https://www.vic.gov.au/familyviolence/the-orange-door.html>

VICTORIA POLICE

000 or your local police station

DET INCIDENT SUPPORT AND OPERATIONS CENTRE

1800 126 126

INCIDENT MANAGEMENT AND SUPPORT UNIT

1800 126 126

EMPLOYEE CONDUCT BRANCH

(03) 9637 2595

DIOCESAN OFFICE

Melbourne (03) 9267 0228

Ballarat (03) 5337 7135

Sale (03) 5622 8600

Sandhurst (03) 5443 2377

INDEPENDENT SCHOOLS

VICTORIA
(03) 9825 7200

THE LOOKOUT

The LOOKOUT has a service directory, information, and evidence based guidance to help you respond to family violence: <http://www.lookout.org.au>

Family violence victims/survivors can be referred to **1800 Respect** for counselling, information and a referral service: **1800 737 732**

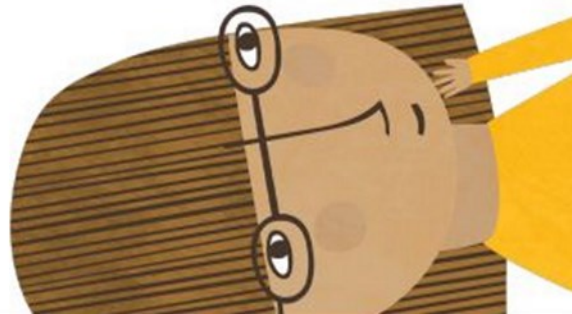
PROTECT

THE EDUCATION STATE

VICTORIA
Education and Training

CECV
CHILD EDUCATION COMMUNITY CONNECTIONS OF VICTORIA

DEPARTMENT OF EDUCATION AND TRAINING





		<u>LOADED FRIES</u>	
		SMALL	\$ 7.50
		LARGE	\$ 11.00
		<u>BURGERS</u>	
		Bacon & Egg Roll	\$ 7.00
		Bacon & Egg Sandwich	\$ 6.50
		Chicken parma roll	\$ 12.00
		Chicken schnitzel & gravy roll	\$ 7.50
		Chicken schnitzel & salad roll	\$ 8.00
		Chicken schnitzel with the lot	\$ 12.00
		Chicken wrap with the LOT	\$ 12.00
		PLAIN	\$ 10.00
		Fish burger with the LOT	\$ 14.00
		PLAIN	\$ 12.00
		Hamburger with the LOT	\$ 12.00
		PLAIN	\$ 10.00
		Souvlaki- beef/lamb/chicken	
		LOT	\$ 12.00
		PLAIN	\$ 10.00
		Steak sandwich with the LOT	\$ 12.00
		PLAIN	\$ 10.00
		<i>Sauces- tomato, bbq, mayo, garlic, sweet chilli, hot chilli, tartare</i>	
<u>FISH 'N' CHIPS</u>			
Minimum chips	\$ 4.00		
Battered sav	\$ 3.50		
Boneless wing ding	\$ 1.50		
Calamari rings	\$ 1.50		
Chicken dim sim	\$ 2.00		
Chicken nugget	\$ 0.80		
Chiko roll	\$ 3.50		
Chilli chicken strip	\$ 2.00		
Corn jack	\$ 3.50		
Crab sticks	\$ 1.50		
Crumbed prawns	\$ 1.80		
Dim sim	\$ 1.50		
Fish bites	\$ 1.50		
Fish cakes	\$ 3.00		
<u>FISH</u>			
FLAKE	\$ 8.00		
BLUE GRENADIER	\$ 8.00		
Flat head fillets	\$ 2.00		
Garlic chicken ball	\$ 1.80		
Hash brown	\$ 1.20		
Magdala	\$ 3.50		
Mini dim sim	\$ 0.75		
Mini spring roll	\$ 2.00		
Pineapple fritter	\$ 3.00		
Pluto pup	\$ 3.50		
Potato cake	\$ 1.50		
Scallops	\$ 1.80		
South Melbourne dim sim	\$ 2.00		
Spring roll	\$ 3.50		
Wing ding	\$ 2.50		
<u>CHIPS, CHEESE & GRAVY</u>			
SMALL	\$ 6.00		
MEDIUM	\$ 9.00		
LARGE	\$ 12.00		
<i>Tomato sauce sachet</i>	<i>\$ 0.30</i>		
		<u>EXTRAS</u>	
		Gravy on chips	\$ 1.00
		Meat	\$ 4.00
		Bacon or Egg	\$ 2.00
		Cheese or Pineapple	\$ 1.00
		Squeezy sauce - per sachet	\$ 0.30
		Small salad	\$ 5.00
		Large salad	\$ 6.00
		<u>BAKERY</u>	
		Plain pie	\$ 5.00
		Flavoured pie	\$ 5.50
		Sausage Roll	\$ 4.50
		Pastie	\$ 4.80
		Salad only rolls	\$ 6.00
		Meat and salad rolls	\$ 7.00
		Salad only sandwich	\$ 5.50
		Meat and salad sandwich	\$ 6.50
		Salad wraps	\$ 7.00
		Salad Tubs Small	\$ 5.00
		Salad Tubs Large	\$ 6.00
		Fruit Tub Small Term 1 & 4 only	\$ 4.00
		Fruit Tub Large Term 1 & 4 only	\$ 5.00



Stanhope Primary School

Learning • Success • Respect • Citizenship



Principal: Christine Owen

Phone: 03 5857 2514

Mobile: 0419 548 318

Email: stanhope.ps@education.vic.gov.au

48 Midland Highway

PO Box 19

Stanhope, Victoria 3623

<http://stanhopeps.vic.edu.au>

Dear Families,

We would like to inform you about the upcoming National Assessment Program – Literacy and Numeracy (NAPLAN) tests scheduled for students in Years 3 and 5 across Australia. These assessments play a crucial role in evaluating students' proficiency in key areas, including reading, writing, conventions of language, and numeracy.

The testing window for NAPLAN is set to take place from March 13th (Wednesday) through to March 25th (Monday). During this period, students will be participating in online assessments.

To ensure your child feels confident and prepared for the NAPLAN tests, we encourage families to engage in practice sessions at home. Familiarising your child with the online testing platform and providing opportunities to practice various question types can contribute to their overall readiness for the assessments.

To support you in this process, we have provided an online link below. This resource gives you access to NAPLAN practice questions tailored for each year level. By using these materials, you can work with your child to reinforce their skills and enhance their comfort with the test format.

[NAP - Public demonstration site](https://nap.edu.au/naplan/public-demonstration-site)

<https://nap.edu.au/naplan/public-demonstration-site>

By participating in practice sessions, you can help your child build confidence, develop effective strategies, and alleviate any potential test-related anxiety. It is important to create a positive and supportive environment at home during this preparation period.

We appreciate your collaboration in ensuring your child's success in the upcoming NAPLAN tests. If you have any questions or concerns, please feel free to reach out to me here at school or use the contact information provided on the NAPLAN website.

Thank you for your continued support in your child's education.

Yours sincerely,

Fiona Wallace

Acting Principal

Stanhope Primary School

PH: 5857 2514

Mob: 0419 548 318

Fiona.Wallace@education.vic.gov.au

Stanhope Primary School



Learning, Success, Respect, Citizenship

Principal: Christine Owen
PH: 03 5857 2514
Mob: 0419 548 318
stanhope_ps@education.vic.gov.au

48 Midland Highway
P.O. Box 19
Stanhope, 3623
<http://stanhopeps.vic.edu.au/>

Parent Payment Arrangements 2024

Dear Parent

Stanhope Primary School is looking forward to another great year of teaching and learning and would like to advise you of Stanhope Primary School's voluntary financial contributions for 2024.

Schools provide students with free instruction to fulfil the standard Victorian Curriculum and we want to assure you that all contributions are voluntary. Nevertheless, the ongoing support of our families ensures that our school can offer the best possible education and support for our students.

For further information on the Department's Parent Payments Policy please see a one-page overview attached.

Stanhope Primary School makes every effort to keep contributions to a minimum and affordable for all parents.

Please find the contribution schedule for Prep through to Grade 6 attached. The contribution schedule applies for each individual student in a family.

A list of stationery items and student requisites for families to provide or purchase from their preferred supplier, is also attached.

All items will need to be labelled at home with your student's name. Item quantities are suggested adequate for one years' normal classroom use, but please note that some items may need to be replenished throughout the year and damaged or lost items will need to be replaced and costed accordingly. Please also note that excursion & incursion charges will be costed separately at the time of the event.

'Inspiring Lifelong Learning'

Financial Support for Families

Stanhope Primary School understands that some families may experience financial difficulty and offers a range of support options, including:

- the Camps, Sports and Excursions Fund (Health Care Card holders only. Forms available at school office)
- Flexible payment arrangements

For a confidential discussion about accessing these services, or if you would like to discuss alternative payment arrangements, contact:

Christine Owen or Mica Rosenberg

Ph: 03 5857 2514 Email: stanhope.ps@education.vic.gov.au

Payment Methods

- Cash
- Cheque
- Bpay (NOT DIRECT DEPOSIT)

Refunds

Refunds generally only apply to events or activities such as camps and excursions. If a camp or excursion is cancelled or altered by the school, or a student is no longer able to attend part or all of the camp or excursion, our school will consider requests for partial or full refunds of payments made by parents/carers on a case-by-case basis taking into account the individual circumstances. Generally we will not be able to refund payments made for costs that have already been paid where those funds have already been transferred or committed to a third party and no refund is available to the school. Where possible, we will provide information about refunds to parents/carers at the time of payment.

For further information on the Department's Parent Payment Policy. Please see a one page overview attached.

Yours sincerely,

Christine Owen
Principal

Gerard Lucardie
School Council President

Contribution schedule – Year Prep –Year 6

Please find the itemised list of Curriculum Contributions and Other Contributions for your child. Stanhope Primary School also continues to welcome your Extra-Curricular Items & Activities contributions for 2024.

All payments are requested by end of Term 1, 2024.

Curriculum Contributions

Below is a list of items and activities which enable your child to learn the standard curriculum, which will be sourced by the school. This year we are able to offer reduced fees from those of 2024. Each year is calculated according to requirements for that specific year.

Curriculum Contributions - items and activities that students use, or participate in, to access the Curriculum	Amount
Classroom materials & equipment	\$20
Stationery consumables; including large scrap books, dotted thirds, maths grid books, chunky pencils, plastic pockets	\$10
Art & Craft consumables; including craft paper, PVA glue, sparkles, goggle eyes, split pins, paint, pastels, charcoal, clay, paper plates, doilies	\$5
Science materials: including cover paper, coloured card, PVA glue, flour, salt, food colourings, sugar, bi-carb soda, baking powder, milk or milk substitute, vinegar	\$15
Photocopying & printing for students	\$40
Provision & Upkeep of school devices, peripherals & ICT	\$20
Digital Online Assessments	\$25
MACC Art	\$35
MARC Library	\$35
Total for Contributions	\$205

Other Contributions

Other Contributions - for non-curriculum items and activities	Amount
First aid equipment	
School grounds maintenance & improvements	
School Sports Victoria membership	
	TOTAL \$

Extra-Curricular Items & Activities

Stanhope Primary School offers a range of items and activities that enhance or broaden the schooling experience of students and are above and beyond what the school provides to deliver the Curriculum. These are provided on a user-pays basis.

If you would like to purchase an item or activity for your child, please indicate on the table below and return this to the school by 10th February 2024.

Extra-Curricular Items & Activities	Amount
Optional camps and excursions and events as scheduled throughout 2024. The cost of these excursions will be advised throughout the year.	To be advised
Graduation Bears	TBA
Grade 6 T Shirt -	TBA
TOTAL	\$

FAMILIES TO PROVIDE THESE ITEMS PLEASE

Educational Items for Students to Own

Attached is a list of items that the school recommends you purchase for your child to individually own and use.

Stanhope Primary School 2024 School Requisites List

Please supply the following items which will be needed by your child, according to your child/ren's class level.

Some items are intended to last all year, while others will need to be replenished throughout the year, e.g. pens, pencils, glue sticks etc. **A request note will be sent home with your child when this is required.**

The quantities listed beside each item should suffice for at least one term in most cases. **Items from previous year are welcome to be used rather than purchase the same item/s again.** E.g. scissors, pencil case, ruler etc

All items should be clearly named and brought to school on the first day of Term 1.

Prep, One Two	
Pencil Eraser	1
Sharpener- 2 hole	1
Pencil case; fabric/vinyl. Max 32cm x 22cm. NO hard cases	1
Ruler	1
Scissors	1
Glue sticks – large	2
Pk 12 coloured textas	1
Pk 12 coloured pencils- triangular if possible	1
Whiteboard markers	1 pk
Highlighters	1 pk
A4 Display folder	1
Headphones - essential	1 pair/set

Grade 3-6 items should last all year	
Grey lead pencil - HB	12
Red, ruling up pencil	4
Pencil Eraser	2
Sharpener	1
Pencil case; fabric/vinyl. Max 32cm x 22cm. NO hard cases	1
Ruler – 40cm	1
Scissors	1
Coloured textas (fine tip)	1 pk
Coloured pencils	1 pk
Black fineliner felt tip pen	1
Red pens (grades 5 -6 only)	5
Blue pens (grades 5 -6 only)	10
Black pens (grades 5 -6 only)	10
Whiteboard markers -	1 pk
Highlighters	1 pk
Glue sticks - large	4
Display folder	2
Headphones- essential	1 pair/set
BYO DEVICE: as per school specifications (this can be sent separately when requested)	Grades 3-5 are invited to BYOD. Not compulsory

If you have any questions please don't hesitate to contact the school on **5857 2514**

PARENT PAYMENTS POLICY

ONE PAGE OVERVIEW



FREE INSTRUCTION

- Schools provide students with free instruction and ensure students have free access to all items, activities and services that are used by the school to fulfil the standard curriculum requirements in Victorian Curriculum F-10, VCE and VCAL.
- Schools may invite parents to make a financial contribution to support the school.



PARENT PAYMENT REQUESTS

Schools can request contributions from parents under three categories:

Curriculum Contributions	Other Contributions	Extra-Curricular Items and Activities
Voluntary financial contributions for curriculum items and activities which the school deems necessary for students to learn the Curriculum.	Voluntary financial contributions for non-curriculum items and activities that relate to the school's functions and objectives.	Items and activities that enhance or broaden the schooling experience of students and are above and beyond what the school provides for free to deliver the Curriculum. These are provided on a user-pays basis.

- Schools may also invite parents to supply or purchase educational items to use and own (e.g. textbooks, stationery, digital devices).



FINANCIAL HELP FOR FAMILIES

- Schools put in place financial hardship arrangements to support families who cannot pay for items or activities so that their child doesn't miss out.
- Schools have a nominated parent payment contact person(s) that parents can have a confidential discussion with regarding financial hardship arrangements.



SCHOOL PROCESSES

- Schools must obtain school council approval for their parent payment arrangements and publish all requests and communications for each year level on their school website for transparency.

SUPPORT YOUR CHILD'S EDUCATION WITH 12 MONTHS FREE INTERNET AT HOME

The Australian Government has established the School Student Broadband Initiative to provide free home internet for one year for up to 30,000 eligible families with school-aged students.

The initiative aims to boost education opportunities. NBN Co is leading the rollout of this initiative across the country.

How the School Student Broadband Initiative can help your child

Children who can access online learning at home as part of their education are more likely to engage in classroom activities.

Access to fast internet at home can also support children to build their digital skills, learn how to safely use the internet and take part in a world that is more reliant on digital technology.

Eligibility

To be eligible, families must:

- have a child living at home enrolled in an Australian school in 2023
- not have an active National Broadband Network internet service at their home* (having a mobile internet service does not affect eligibility)
- live in a premises that can access the National Broadband Network through a standard connection. NBN Co will check this for you after you apply
- register interest with your school and complete a consent form to be assessed for eligibility.

*If an address has been disconnected within 14 days prior to an eligibility check – the address will be classified as ineligible. There may be cases where exceptions can be made, please contact the School Student Broadband Initiative team at SSBI@education.vic.gov.au to discuss further.

How the School Student Broadband Initiative works

If you are eligible, your home internet service will be provided at no cost for one year with a participating internet provider over the National Broadband Network. Each internet provider has its own step-by-step process to get you connected, which may involve you providing identification.

Once you sign up, the internet provider will help you set up your connection. The initiative does not include devices such as a computer or tablet. Other members of your household can use the internet service provided through this initiative.

The one-year period will start from the day your service is activated with your chosen provider. At the end of the one-year period, you will not be placed onto a paid service by your internet provider without your consent. The Australian Government is considering options beyond the one-year free period.

How to apply

- Ask your school for a copy of the School Student Broadband Initiative consent form.
- Complete the consent form and return to the school.
- NBN Co will use student address details on the consent form to confirm eligibility.

- If you are eligible, NBN Co will issue a voucher for your family to use to sign up with a participating internet provider. This will be provided to you by your school.

Please note: NBN Co will review the home address for eligibility. No personal information other than your main home address will be shared with NBN Co. Please see the consent form for details about how personal information will be used.

Find out more

For more information about the School Student Broadband Initiative, visit

<https://www.infrastructure.gov.au>

FORM 3: SELF-NOMINATION FORM FOR PARENT MEMBER CATEGORY

(Formerly Schedule 5A)

I wish to declare my candidacy for an elected position as a parent member on the

STANHOPE PRIMARY SCHOOL council.

Name

Residential address

.....

Contact phone (mobile or landline)

Email

I am the parent/guardian of who is/are currently enrolled at this school.

Statement

I am an employee of the Department of Education and Training.	Yes / No (please circle)
I am an employee of the school council.	Yes / No (please circle)
I am engaged in work at and for the school.	Yes / No (please circle)

I am prepared to serve as a Parent member of the above-named school council. I hereby declare that:

- I am not, and have ever been, insolvent under administration
- I am not of unsound mind
- I have not been found guilty of an offence that is, or would if committed in Victoria be, an indictable offence
- I am not a registrable offender within the meaning of the *Sex Offenders Registration Act 2004*.
- I am not suffering from any medical condition that would affect my ability to perform the role of member of a school council.

Signature of candidate..... Date / /

You will be notified when your nomination has been received.

The personal information provided in this form is collected as part of the school council election nomination process. The information may be used to determine your eligibility as a candidate. Your personal information may be disclosed as a result of inspection prior to the commencement of voting or at any time up to one year from the declaration of the poll.

Your name will be included in a list of school council candidates and nominators (where applicable) posted in a prominent position at the school and for candidates, on a ballot paper (where applicable). Further, the name, membership category, gender (optional), term of office, office held (if any) of school council members and notification whether the member is an employee of the Department will be forwarded to the Department of Education and Training by the principal by 30 April each year as a record of council membership and may be used for statistical purposes.

You can access your personal information by contacting the principal on:

If you choose not to give some or all of the information requested your nomination may not be accepted.

If you have any queries about the school council nomination process, please contact the principal.