



# Stanhope Primary School

Learning • Success • Respect • Citizenship



Principal: Christine Owen

Phone: 03 5857 2514

Mobile: 0419 548 318

Email: [stanhope.ps@education.vic.gov.au](mailto:stanhope.ps@education.vic.gov.au)

## Newsletter

48 Midland Highway

PO Box 19

Stanhope, Victoria 3623

<http://stanhopeps.vic.edu.au>

### Inspiring Lifelong Learning

ISSUE 34: November 9th 2023

#### REMINDERS & THINGS TO DO

##### Christmas Hamper

Would families please remember to donate some non-perishable items for our Christmas Hamper fundraiser before 1st December.

Thank you to everyone who has already contributed.

**NO HAT—NO PLAY**

We are a **SUNSMART** School



**YES  
OUTDOOR PLAY**

#### DATES TO REMEMBER

##### **Saturday 11th November**

- ◆ Remembrance Day at the War Memorial Stanhope 10.50am

##### **Tuesday 14th November**

- ◆ ART

##### **Wednesday 15th November**

- ◆ School Council 7pm and Finance Meeting 6.30pm

##### **Mon 20th November**

- ◆ Gr P-3 after School Fun Session

##### **Mon 20th –Thurs 23rd Nov**

- ◆ Gr 4-6 Melbourne Urban Camp

##### **Tuesday 21st November**

- ◆ LIBRARY

##### **Thursday 23rd November**

- ◆ Blue Earth Sports

##### **Tuesday 28th November**

- ◆ ART

##### **Tuesday 5th December**

- ◆ LIBRARY

# From the Principal



**Christine  
Owen**

## Welcome New Students!

We now have three new students attending our school! Lily, Daisy and Diamond-Rose. They easily joined in to our regular Wednesday morning sport activities and were soon part of our group. It's terrific to have such friendly girls join our school community.

## Kinder to School Transition

On Wednesday, our students visited our kinder to spend some time reading together, playing together and finding out what our kinder friends think school will be like. Next week, we will have the kinder kids visit us! These reciprocal visits will continue for the next few weeks.

## Kaboom Kids!

Today, our Prep –Grade 2 students enjoyed the fun and games run by Kaboom Kids at Kyabram P-12! It was a great chance to engage with lots of other students from all the other local schools, and a great beginning for our new girls!

## Teacher Learning

Mrs Depasquale spent yesterday in Melbourne learning more about the specific methods of teaching using decodable readers. We have a comprehensive set of decodable readers at school and Mrs Depasquale now knows the most effective way to use them and work through the sequence of phonics teaching. Children must be explicitly taught knowledge of letters and sounds and the skills of sounding out and blending. We used a Phonological Screener to establish each student's phonological awareness, early in the year and have made phonics a focus since then.



*Down ball continues to be popular at lunchtimes.*



## FROM THE

## **Business Manager**



**Mica will still be in the office on Tuesdays and Thursdays.**

**I am happy to discuss confidential payment options for fees or camps & excursions with you.**

## Café Lunch Orders

**3rd Wednesday  
of every month**

**15<sup>th</sup> November  
20<sup>th</sup> December**

## **EXCURSIONS**

Please note that excursion permissions need to be approved on uEducateUs & any money needs to be returned to the school prior to the day of the Excursion, thank you.

# Kaboom Sports



This morning our P-2 students had a fantastic time at Kaboom Sports.





# KINDER TRANSITION FUN





Congratulations to our past student

## **JINAYA NURSE**

who was selected in the 15/U Goulburn Region team to represent her region at State Netball Titles in Melbourne in October.

We wish her well in her future endeavours!

# **REMEMBRANCE DAY**

**Saturday 11 November 2023 at 10.50am**

at the Stanhope War Memorial, McEwen Place, Stanhope

***EVERYONE IS WELCOME***



## ***Christmas Hamper***

Our Parent's Club are organising a Christmas Hamper Raffle.

We are asking all our families and staff to donate suitable, non-perishable items in the coming weeks.

These can be left in the school staff room before 1st December. Thank you.



## Thank you to our generous sponsors

proPAVE  
landscapes

Phil De'Ath  
0418 527 365

Lina Ding  
0412 266 635

KYABRAMS  
MAIN STREET  
**BUTCHERY**

"The Best Meat by Miles"

170 Allan St, Kyabram PH: 5853 2123



*Kyabram* CLUB  
*Where good friends meet*



- Stanhope Supermarket
- Stanhope RSL Sub Branch

**DISCLAIMER:** The Department of Education & Training, and Stanhope Primary School do not endorse the products or services of any private advertiser. No responsibility is accepted by the Department or the School for the accuracy of information contained in advertisements.

**PROTECT**

Protecting children & young people  
from abuse is our responsibility



**HELP IS BUT A PHONE CALL AWAY**

**LIFELINE**  
**13 11 14**

**KID'S HELPLINE**  
**1800 55 1800**

**BEYOND BLUE**  
**1300 22 4636**

## AWARDS



**SUCCESS (Great Effort in School  
Production):**

**Tyler R and Spencer.**

<https://www.facebook.com/stanhopeps/>





		<b><u>LOADED FRIES</u></b>	
		SMALL	\$ 7.50
		LARGE	\$ 11.00
		<b><u>BURGERS</u></b>	
		Bacon & Egg Roll	\$ 7.00
		Bacon & Egg Sandwich	\$ 6.50
		Chicken parma roll	\$ 12.00
		Chicken schnitzel & gravy roll	\$ 7.50
		Chicken schnitzel & salad roll	\$ 8.00
		Chicken schnitzel with the lot	\$ 12.00
		Chicken wrap with the LOT	\$ 12.00
		PLAIN	\$ 10.00
		Fish burger with the LOT	\$ 14.00
		PLAIN	\$ 12.00
		Hamburger with the LOT	\$ 12.00
		PLAIN	\$ 10.00
		Souvlaki- beef/lamb/chicken	
		LOT	\$ 12.00
		PLAIN	\$ 10.00
		Steak sandwich with the LOT	\$ 12.00
		PLAIN	\$ 10.00
		<b><i>Sauces- tomato, bbq, mayo, garlic, sweet chilli, hot chilli, tartare</i></b>	
<b><u>FISH 'N' CHIPS</u></b>			
Minimum chips	\$ 4.00		
Battered sav	\$ 3.50		
Boneless wing ding	\$ 1.50		
Calamari rings	\$ 1.50		
Chicken dim sim	\$ 2.00		
Chicken nugget	\$ 0.80		
Chiko roll	\$ 3.50		
Chilli chicken strip	\$ 2.00		
Corn jack	\$ 3.50		
Crab sticks	\$ 1.50		
Crumbed prawns	\$ 1.80		
Dim sim	\$ 1.50		
Fish bites	\$ 1.50		
Fish cakes	\$ 3.00		
<b><u>FISH</u></b>			
FLAKE	\$ 8.00	<b><u>EXTRAS</u></b>	
BLUE GRENADIER	\$ 8.00	Gravy on chips	\$ 1.00
Flat head fillets	\$ 2.00	Meat	\$ 4.00
Garlic chicken ball	\$ 1.80	Bacon or Egg	\$ 2.00
Hash brown	\$ 1.20	Cheese or Pineapple	\$ 1.00
Magdala	\$ 3.50	Squeezy sauce - per sachet	\$ 0.30
Mini dim sim	\$ 0.75	Small salad	\$ 5.00
Mini spring roll	\$ 2.00	Large salad	\$ 6.00
Pineapple fritter	\$ 3.00		
Pluto pup	\$ 3.50	<b><u>BAKERY</u></b>	
Potato cake	\$ 1.50	Plain pie	\$ 5.00
Scallops	\$ 1.80	Flavoured pie	\$ 5.50
South Melbourne dim sim	\$ 2.00	Sausage Roll	\$ 4.50
Spring roll	\$ 3.50	Pastie	\$ 4.80
Wing ding	\$ 2.50	Salad only rolls	\$ 6.00
		Meat and salad rolls	\$ 7.00
		Salad only sandwich	\$ 5.50
<b><u>CHIPS, CHEESE &amp; GRAVY</u></b>		Meat and salad sandwich	\$ 6.50
SMALL	\$ 6.00	Salad wraps	\$ 7.00
MEDIUM	\$ 9.00	Salad Tubs Small	\$ 5.00
LARGE	\$ 12.00	Salad Tubs Large	\$ 6.00
		Fruit Tub Small Term 1 & 4 only	\$ 4.00
<b><i>Tomato sauce sachet</i></b>	<b>\$ 0.30</b>	Fruit Tub Large Term 1 & 4 only	\$ 5.00





# Child safety and wellbeing at Stanhope Primary School

## *information for families and the school community*

The Victorian Government has announced new [Child Safe Standards](#) to further strengthen child safety across organisations, including schools. The new standards recognise the critical importance of families and the broader school community in maintaining and promoting child safety and wellbeing.

Stanhope Primary School has reviewed and updated our child safety policies and procedures to ensure they meet the requirements of the new standards. These are available to view our school's website, via UeducateUs, and at the school's front office].

We are committed to continuous improvement in our approach to child safety and wellbeing and welcome feedback from families and members of our school community on ways we can further strengthen our child safety policies, procedures and practices.

If you have any suggestions, comments or questions, please contact Stanhope Primary School at [stanhope.ps@education.vic.gov.au](mailto:stanhope.ps@education.vic.gov.au) or by phone on 03 5857 2514.

## Victoria's Child Safe Standards

- **Child Safe Standard 1** – Establish a culturally safe environment in which the diverse and unique identities and experiences of Aboriginal children and young people are respected and valued.
- **Child Safe Standard 2** – Ensure that child safety and wellbeing are embedded in school leadership, governance and culture.
- **Child Safe Standard 3** – Children and young people are empowered about their rights, participate in decisions affecting them and are taken seriously.
- **Child Safe Standard 4** – Families and communities are informed and involved in promoting child safety and wellbeing.
- **Child Safe Standard 5** – Equity is upheld and diverse needs are respected in policy and practice.
- **Child Safe Standard 6** – People working with children and young people are suitable and supported to reflect child safety and wellbeing values in practice.
- **Child Safe Standard 7** – Ensure that processes for complaints and concerns are child focused.
- **Child Safe Standard 8** – Staff and volunteers are equipped with the knowledge, skills and awareness to keep children and young people safe through ongoing education and training.
- **Child Safe Standard 9** – Physical and online environments promote safety and wellbeing while minimising the opportunity for children and young people to be harmed.
- **Child Safe Standard 10** – Implementation of the Child Safe Standards is regularly reviewed and improved.
- **Child Safe Standard 11** – Policies and procedures that document how schools are safe for children, young people and students.
- Ministerial Order 1359 provides the framework for child safety in schools.

## FOUR CRITICAL ACTIONS FOR SCHOOLS

# Responding to Incidents, Disclosures and Suspicions of Child Abuse

### 1 RESPONDING TO AN EMERGENCY

If there is no risk of immediate harm go to **Action 2**

If a child is at immediate risk of harm you **must** ensure their safety by:

- separating alleged victims and others involved
- administering first aid
- calling **000** for urgent medical and/or police assistance to respond to immediate health or safety concerns
- identifying a contact person at the school for future liaison with Police.

Where necessary you may also need to maintain the integrity of the potential crime scene and preserve evidence.

### 2 REPORTING TO AUTHORITIES / REFERRING TO SERVICES

As soon as immediate health and safety concerns are addressed you **must** report all incidents, suspicions and disclosures of child abuse as soon as possible. Failure to report physical and sexual child abuse may amount to a criminal offence.

Q: Where does the source of suspected abuse come from?

#### WITHIN THE SCHOOL

**VICTORIA POLICE**  
You **must** report all instances of suspected child abuse involving a school staff member, contractor, volunteer or visitor to Victoria Police.

You **must also** report internally to:

- GOVERNMENT SCHOOLS**
  - School principal and/or leadership team
  - Employee Conduct Branch
  - DET Incident Support and Operations Centre.
- CATHOLIC SCHOOLS**
  - School principal and/or leadership team
  - Diocesan education office.
- INDEPENDENT SCHOOLS**
  - School principal and/or school chairperson
  - Commission for Children and Young People on **1300 782 978**

All allegations of 'reportable conduct' **must** be reported as soon as possible to:

- GOVERNMENT SCHOOLS**
  - Employee Conduct Branch
- CATHOLIC SCHOOLS**
  - Diocesan education office
- INDEPENDENT SCHOOLS**
  - Commission for Children and Young People on **1300 782 978**.

#### OTHER CONCERNS

If you believe that a child is not subject to abuse, but you still hold **significant concerns** for their wellbeing you **must** still act. This may include making a referral or seeking advice from:

- Child FIRST/The Orange Door (in circumstances where the family are open to receiving support)
- DHHS Child Protection
- Victoria Police.

### 3 CONTACTING PARENTS/CARERS

Your principal **must** consult with DHHS Child Protection or Victoria Police to determine what information can be shared with parents/carers. They may advise:

- not to contact** the parents/carer (e.g. in circumstances where the parents are alleged to have engaged in the abuse, or the child is a mature minor and does not wish for their parent/carer to be contacted)
- to contact** the parents/carers and provide agreed information (this must be done as soon as possible, preferably on the same day of the incident, disclosure or suspicion)
- how to communicate** with all relevant parties with consideration for their safety.

### 4 PROVIDING ONGOING SUPPORT

Your school **must** provide support for children impacted by abuse. This should include the development of a **Student Support Plan** in consultation with wellbeing professionals. This is an essential part of your duty of care requirements.

Strategies may include development of a safety plan, direct support and referral to wellbeing professionals and support.

You **must** follow the **Four Critical Actions** every time you become aware of a further instance or risk of abuse. This includes reporting new information to authorities.

### YOU MUST TAKE ACTION

You **must** act, by following the Four Critical Actions, as soon as you witness an incident, receive a disclosure or form a reasonable belief\* that a child has, or is at risk of being abused.

As a school staff member, you play a **critical role** in protecting children in your care.

You **must** act if you form a suspicion or reasonable belief, even if you are unsure and have not directly observed child abuse (e.g. if the victim or another person tells you about the abuse).

\*A reasonable belief is a deliberately low threshold. This enables authorities to investigate and take action.

### CONTACT

#### DHHS CHILD PROTECTION

**AREA**  
North Division **1300 664 977**  
South Division **1300 655 795**  
East Division **1300 300 391**  
West Division (Rural) **1800 075 599**  
West Division (Metro) **1300 664 977**

**AFTER HOURS**  
After hours, weekends, public holidays **13 12 78**

**CHILD FIRST**  
<https://services.dhhs.vic.gov.au/federal-and-support-teams>

**ORANGE DOOR**  
<https://www.vic.gov.au/familyviolence/the-orange-door.html>

**VICTORIA POLICE**  
**000** or your local police station

**DET INCIDENT SUPPORT AND OPERATIONS CENTRE**  
**1800 126 126**

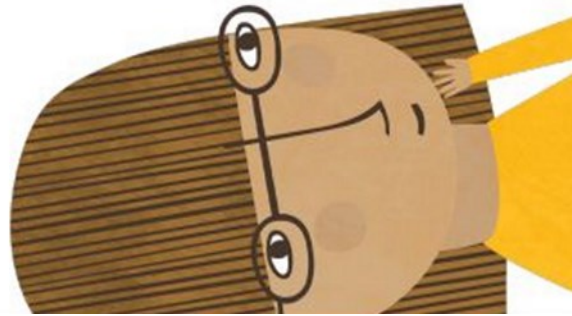
**INCIDENT MANAGEMENT AND SUPPORT UNIT**  
**1800 126 126**

**EMPLOYEE CONDUCT BRANCH**  
**(03) 9637 2595**

**DIOCESAN OFFICE**  
Melbourne **(03) 9267 0228**  
Ballarat **(03) 5337 7135**  
Sale **(03) 5622 8600**  
Sandhurst **(03) 5443 2377**

**INDEPENDENT SCHOOLS VICTORIA**  
**(03) 9825 7200**

**THE LOOKOUT**  
The LOOKOUT has a service directory, information, and evidence based guidance to help you respond to family violence: <http://www.lookout.org.au>  
Family violence victims/survivors can be referred to **1800 Respect** for counselling, information and a referral service: **1800 737 732**



**PROTECT**

THE EDUCATION STATE

VICTORIA  
Education and Training

CECV  
CHILD EDUCATION COMMUNITY CONNECTIONS OF VICTORIA

