



Stanhope Primary School

Learning • Success • Respect • Citizenship



Principal: Christine Owen

Phone: 03 5857 2514

Mobile: 0419 548 318

Email: stanhope.ps@education.vic.gov.au

Newsletter

48 Midland Highway

PO Box 19

Stanhope, Victoria 3623

<http://stanhopeps.vic.edu.au>

Inspiring Lifelong Learning

ISSUE 23: July 28th 2022

REMINDERS & THINGS TO DO

DATES TO REMEMBER

STEM

Science-Technology-
Engineering-Mathematics

MATERIALS

If any families could send along plastic bottle tops from milk or juice cartons or pop-top caps for use in our STEM program, it would be very much appreciated.



Friday 29th July

- ◆ ART

Monday 1st August

- ◆ LIBRARY

Wednesday 3rd August

- ◆ Parent-Student-Teacher Conversations
- ◆ 100 Days of School Celebrations (lunch provided)

Friday 12th August

- ◆ ART

Monday 15th August

- ◆ LIBRARY

Wednesday 17th August

- ◆ Café Lunch Orders
- ◆ School Council 7pm
- ◆ Finance Committee 6.30pm

Thursday 18th August

- ◆ Waranga Athletics

Friday 26th August

- ◆ Book Week Dress Up Day
(*must be a book character*)

From the Principal



**Christine
Owen**

Lion's Club Junior Public Speaking – round 2

Well done to Tyler and Lily who both made it to Round 2 of the Junior Public Speaking competition, held at Girgarre Primary School on Tuesday. Both students did very well and did our school and themselves, proud. It's a great feeling knowing that our students can and do represent themselves and their school, so well when they are out in the community.



Wonderful Wednesdays

Each week, Mrs Stockman and myself, plan to deliver some hands-on teaching and learning. Mrs Stockman will focus on the science behind cooking (she might have heard how terrible I am at cooking?) with one group, and I will present some practical challenges to the other group, with the construction of toys, games and activities. Yesterday was our first Wonderful Wednesday and everyone survived!

Semester One Reports Follow Up Conversations

Next Wednesday 3rd August, we will hold our 3 way conversations with parents and students to follow up any celebrations or concerns arising from the Semester One reports. Please indicate your preferred time via uEducateUs where a schedule of available times will be published. If none of the scheduled times suit, please make a mutually convenient time with either myself or Mrs Stockman. For these conversations, we will both be present.

Getting into Training!

Our Dingoes and a couple of Wombat students are preparing for the upcoming athletics by running laps of the oval each morning. They are making some great times and keen to improve their own Personal Best times. What they don't realise is that they are also boosting their brain power as well as their muscle power!

FROM THE **Business Manager**



Mica will still be in the office on Tuesdays and Thursdays.

I am happy to discuss confidential payment options for fees or camps & excursions with you.

Café Lunch Orders

**3rd Wednesday
of every month**

**17th August
19th October
16th November**

STEM with Ms O.

The Wombats STEM challenge was to design the tallest tower possible balanced on straws laid across two plastic cups.

Cooper was the outright winner with a tower of 27 blocks and Jarred was the runner up with his tower of 25 blocks. Well done to all the Wombats who worked extremely well.

STEM with Ms O.

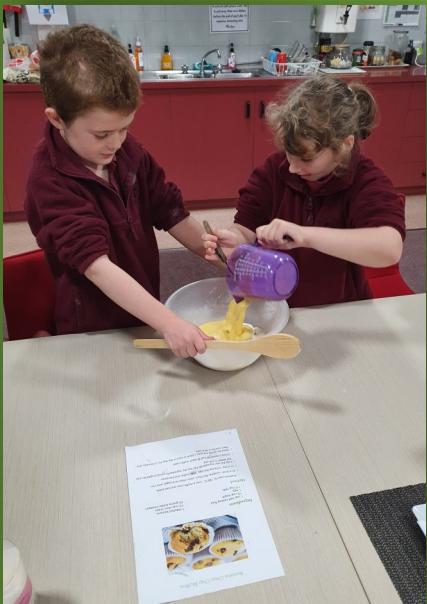
The Dingoes had to construct a catapult and firstly to measure how far a cotton ball went, then how far a ping pong ball went. The best distances were:

Team Seth & Allison: 3.10m
Team Marcus & Declan: 1.54m
Team Lily, Sienna and Tyler: 1.36m

Science in Cooking

with Mrs Stockman

BANANA CHOC CHIP MOFFINS



The delicious smell wafting from the staffroom on Wednesday afternoon was our 'Wonderful Wednesday' cooking program.

Both Dingoes and Wombats made batches of banana choc-chip muffins. Students discussed how over-ripe bananas and other foods could be used for cooking rather than being thrown out.

Students read the recipe, measured ingredients and prepared their muffins. Once they were cooked, the muffins were devoured eagerly by our budding cooks. Hopefully some made it home for other family members to enjoy!

SPORT



MATHS CHALLENGE

Today in Maths the focus was on predicting and then recording how many times the students could do a variety of things. We started at 30 seconds and then went up to 1 minute. At the end most students (and all of the teachers) had a go and guessing and then saying aloud how many different types of foods they could say in 30 seconds.

We are encouraging families to have a go at home and see who can name the most foods in 30 seconds - dont forget to estimate first how many you think you can name.

We are also interested to hear what strategies you used! The winner will be announced in next weeks newsletter! No proof needed just honesty.

SCHOOL BEANIES

Thanks to our Parents Club and Mrs D, all our students now have Stanhope Primary School Beanies!



- ◆ Small caring environment.
- ◆ Individual learning plans to ensure high student outcomes.
- ◆ Engaging curriculum delivery.
- ◆ Parent involvement encouraged.

Stanhope Primary School ENROLMENTS

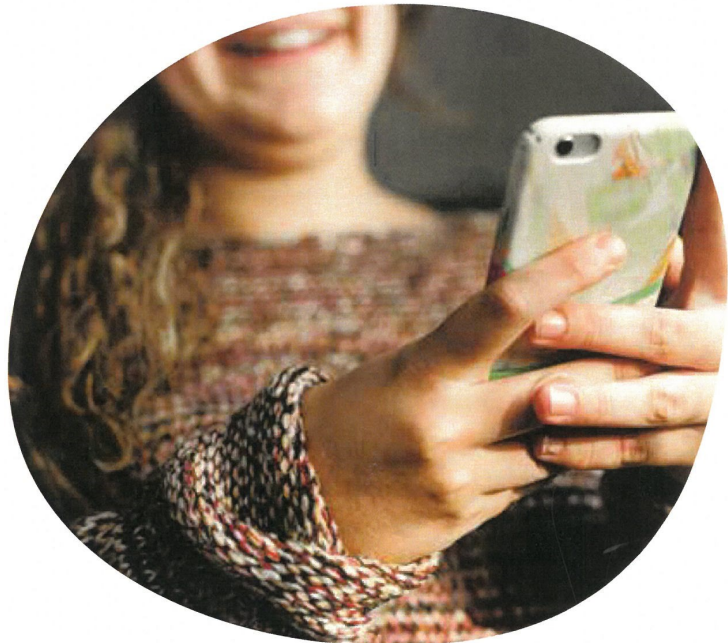
Enrolments are welcome
for our school.

Parents or carers can
contact the school to speak
with the principal,
Christine, or to collect an
enrolment pack.

School tours by
appointment.

Are you being smart online?

- Say kind and friendly things online to other students.
- Before you take a photo or a video, stop and ask the other person if it's OK.
- If another student feels upset about something that happened online, be their friend. Help them tell an adult.
- If you get a message from someone you have never met, don't answer. Tell a parent or a teacher.
- If you feel upset or confused about anything online, tell a parent, a teacher, or another trusted adult. It's good to speak up. Adults will want to help you.



Got a problem?

Tell an adult you trust, such as a parent, teacher, relative or coach.
Or call Kids Helpline on 1800 55 1800.

proPAVE landscapes

Phil De'Ath
0418 527 365

Lina Ding
0412 266 635

PO Box 4017 McKinnon 3204 | enquiries@propavelandscapes.com.au
www.propavelandscapes.com.au

Move to a local bank.

Sure, when you move your banking to Rushworth & District **Community Bank**® Branch you'll have access to great banking products and enjoy premium customer service rivaling any bank in the country.

But there's a deeper satisfaction in knowing your banking is making great things happen in your community.

Drop into your nearest branch at 23 High Street, Rushworth or phone 5856 2122 to discover the impact your banking can have.



Bendigo Bank
Bigger than a bank.

Rushworth & District **Community Bank**® Branch

Bendigo and Adelaide Bank Limited, ABN 11 068 049 178 AFSL/Australian Credit Licence 237879. A232496-05 (458039_v1) (15/03/2019)

bendigobank.com.au

PROTECT



Protecting children & young people from abuse is our responsibility

DISCLAIMER

The Department of Education & Training, and Stanhope Primary School do not endorse the products or services of any private advertiser.

No responsibility is accepted by the Department or the School for the accuracy of information contained in advertisements.



BOVINE INSEMINATIONS

HERD IMPROVEMENT SERVICE

1738 Finlay Road, TONGALA. 3621.

☎ (03) 58590763 Fax: (03) 58590219

www.bovine.com.au parky2@inet.net.au

Thank you to Bovine Inseminations, whose generous sponsorship will cover the replenishment of our sports equipment.

HELP IS BUT A PHONE CALL AWAY

LIFELINE
13 11 14

KID'S HELPLINE
1800 55 1800

BEYOND BLUE
1300 22 4636

AWARDS



SUCCESS:
Bree, and Lily P

CONGRATULATIONS!

<https://www.facebook.com/stanhopeps/>





Rushworth P-12 Year 7 Transition Program 2022

INFORMATION EVENING & EXPO: Tuesday 2nd August, 5.30pm

TERM 3	9.00-9.10	1 9:10 – 10:10	2 10:10-11:10	3 11:30-12:30
Wednesday 10 th August	Advisory Group	ORIENTATION	ONLINE SKILLS	LIBRARY SKILLS
Wednesday 14 th September		PERFORMING ARTS		HUMANITIES
TERM 4	9.00-9.10	1 9:10 – 10:10	2 10:10-11:10	3 11:30-12:30
Thursday 13 th October	Advisory Group Peter Bovell	ENGLISH	MATHS	WELLBEING
Tuesday 15 th November		ART		DESIGN TECHNOLOGY
Tuesday 13 th December *SWT		SCIENCE		FOOD TECHNOLOGY
Recess				
				Lunch
				5 2:20-3:20
				ALL VISITING STUDENTS TO BE COLLECTED FROM THE COLLEGE AT 1.30PM
				HEALTH & PHYSICAL EDUCATION
				HEALTH & PHYSICAL EDUCATION

TERM 3 TRANSITION DAYS:
ALL VISITING STUDENTS TO BE COLLECTED FROM THE COLLEGE AT 12.30PM