



# Stanhope Primary School

Learning • Success • Respect • Citizenship



Principal: Christine Owen

Phone: 03 5857 2514

Mobile: 0419 548 318

Email: [stanhope.ps@education.vic.gov.au](mailto:stanhope.ps@education.vic.gov.au)

## Newsletter

48 Midland Highway

PO Box 19

Stanhope, Victoria 3623

<http://stanhopeps.vic.edu.au>

### Inspiring Lifelong Learning

ISSUE 22: July 21st, 2022

#### REMINDERS & THINGS TO DO

#### DATES TO REMEMBER

Thank you to Parents Club  
for providing each student with a

#### **SCHOOL BEANIE**

These will be given out at assembly  
this Friday—parents welcome

Reminder to Grade 6 families

#### **GRADE 6 GRADUATION POLO SHIRT / RUGBY TOP**

orders to Workwear Connect,  
Kyabram on **5853 2777**

#### **GRADE P-3 FRUIT**

Students can bring a  
piece of fruit (NO fruit  
sticks, bars or cups please) each day  
for their 'fruit break' snack.



#### **PIE WARMER**

Winter is a great time for students to  
enjoy hot food.

Food **MUST** be in FOIL or prepacked  
pie warmer friendly cellophane!

#### **Friday 29th July**

- ◆ ART

#### **Monday 1st August**

- ◆ LIBRARY

#### **Friday 12th August**

- ◆ ART

#### **Monday 15th August**

- ◆ LIBRARY

#### **Wednesday 17th August**

- ◆ Café Lunch Orders
- ◆ School Council 7pm
- ◆ Finance Committee 6.30pm

#### **Thursday 18th August**

- ◆ Waranga Athletics

After refurbishment of our  
classrooms we have an  
excess of furniture

#### **FREE TABLES & CHAIRS**

Please contact the school  
office after 3.15pm

# From the Principal



**Christine  
Owen**

## Back to Business!

Last Friday, students and staff all pitched in to move the key pieces of furniture and equipment back into our regular classrooms. There was a lot of 'stuff' that didn't make the cut and has ended up being left behind or headed for the skip! We have a lot of old classroom tables that might be useful in a shed or cubby house. If you want any, just send us a text or Dojo message and we'll organise a time for you to collect as many as you want.

## Toys Are Fun!

We have started on our toy themed work for this term and have begun some preliminary attempts at making some simple toys. Our Dingoes group are about to get busy learning some old time games, ready to teach them to their classmates in the Wombats room.

## Parent -Teacher conversations

Over the next couple of weeks we will be organising to have time to talk to families about the Semester One Reports and student progress and goals moving forward.

## School Facebook Page

Our school Facebook page appears to have gone completely offline. Despite many attempts to restore the page and its features by myself and more than one technician as well as several attempts to contact Facebook to remedy the problem, nothing has worked and no response has been received. I am hoping to either resuscitate it or create a new one as soon as I can in the near future.



## FROM THE *Business Manager*



**Mica will still be in the office on Tuesdays and Thursdays.**

**I am happy to discuss confidential payment options for fees or camps & excursions with you.**

## Café Lunch Orders

**3rd Wednesday  
of every month**

**17th August  
19th October  
16th November**

## Wombats Scone Making



## From the Principal



*Christine  
Owen*

### **Masks**

The Department of Health strongly recommends that face masks are worn in indoor settings. Face masks are mandatory for those aged 8 and over who are household contacts and attending school. This is because wearing a mask is effective in reducing the transmission of COVID-19.

Face masks are strongly recommended for staff and students aged 8 and over when indoors, but are not required.

Stanhope Primary School strongly encourages students to understand the benefits of wearing a mask to protect themselves and their school community.

### **Exemptions for testing and isolation**

The period of time when someone is considered a recently confirmed case and therefore exempt from testing and isolation requirements has been reduced from the previous 12 weeks to 4 weeks.

This means that staff and children who are household contacts of people with COVID-19 are now required to undertake the testing and isolation requirements from 4 weeks after completing isolation with COVID-19. Previously, this exemption period was 12 weeks.

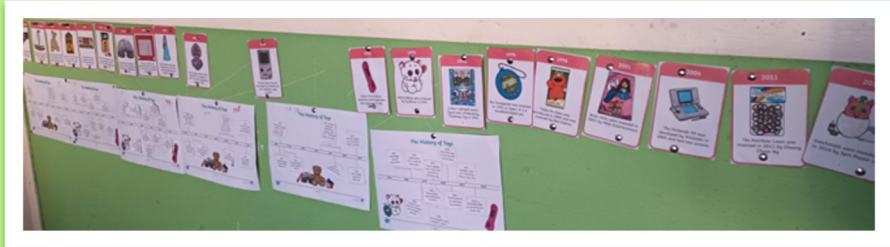
After the 4-week exemption period, students and staff members who are a household contact of a new COVID-19 case, must follow the rules for household contacts, including reporting this to their school.

As part of this they must take 5 rapid antigen tests (RATs) over 7 days and receive negative test results and wear a face mask (if over 8 years old) in indoor spaces.

### **Vaccinations for students**

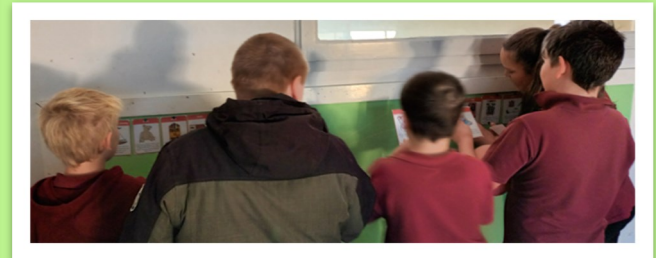
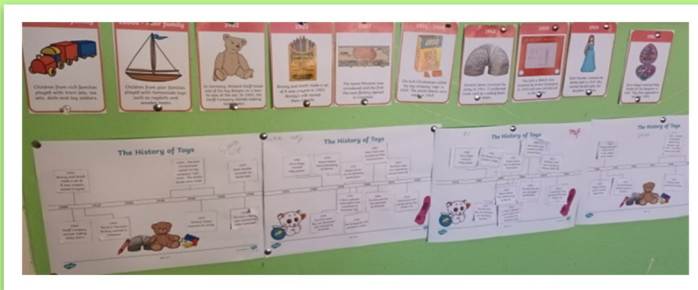
Vaccination remains the best way to protect students and staff in school settings.





## Toys – Then and Now

Our Dingoes worked collaboratively to set up a history timeline of toys from the early 1800's through to today.



# Stanhope Primary School ENROLMENTS

Enrolments are welcome for our school.

Parents or carers can contact the school to speak with the principal, Christine, or to collect an enrolment pack.

- ◆ Small caring environment.
- ◆ Individual learning plans to ensure high student outcomes.
- ◆ Engaging curriculum delivery.
- ◆ Parent involvement encouraged.

School tours by appointment.

# proPAVE landscapes

Phil De'Ath  
0418 527 365

Lina Ding  
0412 266 635

PO Box 4017 McKinnon 3204 | enquiries@propavelandscapes.com.au  
www.propavelandscapes.com.au

## Move to a local bank.

Sure, when you move your banking to Rushworth & District **Community Bank**® Branch you'll have access to great banking products and enjoy premium customer service rivaling any bank in the country.

But there's a deeper satisfaction in knowing your banking is making great things happen in your community.

Drop into your nearest branch at 23 High Street, Rushworth or phone 5856 2122 to discover the impact your banking can have.



**Bendigo Bank**  
Bigger than a bank.

Rushworth & District **Community Bank**® Branch

Bendigo and Adelaide Bank Limited, ABN 11 068 049 178 AFSL/Australian Credit Licence 237879. A232496-05 (458039\_v1) (15/03/2019)

[bendigobank.com.au](http://bendigobank.com.au)

# PROTECT



Protecting children & young people from abuse is our responsibility

## DISCLAIMER

The Department of Education & Training, and Stanhope Primary School do not endorse the products or services of any private advertiser.

No responsibility is accepted by the Department or the School for the accuracy of information contained in advertisements.



## BOVINE INSEMINATIONS

HERD IMPROVEMENT SERVICE

1738 Finlay Road, TONGALA. 3621.

☎ (03) 58590763 Fax: (03) 58590219

[www.bovine.com.au](http://www.bovine.com.au) [parky2@iinet.net.au](mailto:parky2@iinet.net.au)

Thank you to Bovine Inseminations, whose generous sponsorship will cover the replenishment of our sports equipment.

## HELP IS BUT A PHONE CALL AWAY

**LIFELINE**  
**13 11 14**

**KID'S HELPLINE**  
**1800 55 1800**

**BEYOND BLUE**  
**1300 22 4636**

# AWARDS

**NO ASSEMBLY HELD LAST WEEK**

**CONGRATULATIONS!**

<https://www.facebook.com/stanhopeps/>



Transition Tatura's...

... Environmental...



**ART**

Competition

2022

Either by yourself, or with some of your friends, use your favourite form of artistic expression (see our list below) to address the competition topic;

*"A More Self-Sufficient Tatura"*

For more information, ideas and categories, ask at your School Reception for an *Info Flyer* and an *Entry Form* or ...



## AWESOME PRIZES!!

### Age Groups:

Prep to Grade 3  
Grade 4 to Grade 6  
Secondary School



### Art Categories for this Competition:

Visual Art

Performance Art

Literature

Media Arts

### Best entry awards:

\$30.00 per age group per category

\$100.00 for Most Inspirational Entry

Total Award Pool \$460.00

*Every entry will be recognised and acknowledged*



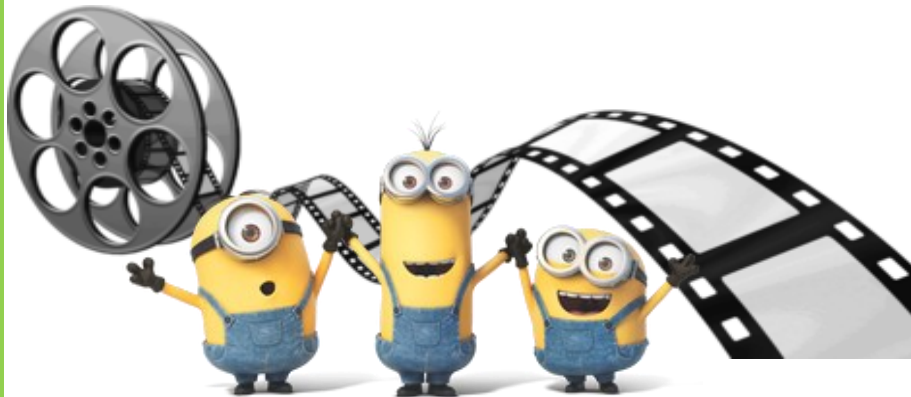
Open to all school children in  
Greater Shepparton and the  
Goulburn Valley

⇒ Entries must be received by 4.00pm, Friday 12 August, 2022



More details required?

Call or SMS Ross on 0407 845 247



**We will be holding a fundraiser at 2pm on the 31st July at the Kyabram Plaza Theatre and our movie is MINIONS!**

We will be fundraising for equipment and to update some essential things at our hall.

Tickets will be \$16 per person and will include movie themed scroggin! (mixed snack)

We hope you can join us for this family friendly event!

Tickets can be purchased online or by contacting us at [kyabram-scouts@gmail.com](mailto:kyabram-scouts@gmail.com) or by Ticket Booking Link - [www.trybooking.com/CARNH](http://www.trybooking.com/CARNH)

Keep up to date 1<sup>st</sup> Kyabram Scouts Facebook Event Link - <https://fb.me/>



# Stanhope Farmers Day

## FRIDAY 29TH JULY

### Senior Citizens Rooms

(Opposite Police Station)

Free event

11am Start

**Speakers from:-**

**Victoria Police**

**Work Safe**

**National Centre Farmer Health**

**Kyabram District Health Service**

Lunch supplied

RSVP: 22nd July

for catering

[stanhopebc@gmail.com](mailto:stanhopebc@gmail.com)

Proudly organised by

Stanhope Police &

The Hub

