



# Stanhope Primary School

Learning • Success • Respect • Citizenship



Principal: Christine Owen

Phone: 03 5857 2514

Mobile: 0419 548 318

Email: [Stanhope@education.vic.gov.au](mailto:Stanhope@education.vic.gov.au)

## Newsletter

48 Midland Highway

PO Box 19

Stanhope, Victoria 3623

<http://stanhopeps.vic.edu.au>

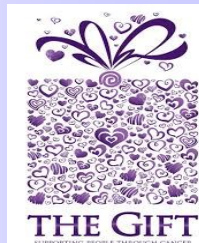
### Inspiring Lifelong Learning

ISSUE 17: June 2nd, 2022

#### REMINDERS & THINGS TO DO

#### DATES TO REMEMBER

### PURPLE DRESS UP DAY



We will once again be dressing in Purple to support a local charity - The Gift. This organisation supports individuals and families facing the challenges associated with a cancer diagnosis.

Students are asked to come dressed in purple clothes and bring a gold coin donation.

#### Friday 6th June

- ◆ LIBRARY

#### Friday 10th June

- ◆ Purple Dress Up Day & gold coin donation for 'The Gift'.

#### Tuesday 14th June

- ◆ FREE Basketball Clinics

#### Wednesday 15th June

- ◆ FREE Excursion Melbourne Museum: Triceratops

#### Thursday 16th June

- ◆ SCHOOL PHOTOS
- ◆ Sporting Schools Netball Skills

#### Monday 20th June

- ◆ LIBRARY

#### Tuesday 21st June

- ◆ FREE Basketball Clinics

#### Wednesday 22nd June

- ◆ FREE Incursion: Science Fun

#### Friday 24th June

- ◆ End of Term, 2.15pm dismissal

Coming up in TERM 3

**FREE GRADE 4-6  
SNOW CAMP  
Mt Feathertop  
Details TBA**

# From the Principal



## Reconciliation Week

This week is Reconciliation Week and our students have been learning about what that means. The Dingoes learned about Eddie Mabo and the landmark High Court case which forever changed how indigenous land rights would be viewed. Our Wombats set the artistic standard by completing some dot paintings for their classroom windows. They were later joined by our two senior girls in painting. Our foyer now has a timeline of events relating to Reconciliation Week. Take the time to read through each piece of information.

**Setting out the timeline of events which led up to Mabo and on to current times.**



**Students created beautiful indigenous-styled artwork with Mrs Mac.**



**Christine Owen**

## **FROM THE Business Manager**



Mica will still be in the office on Tuesdays and Thursdays.

I am happy to discuss confidential payment options for fees or camps & excursions with you.

## **Café Lunch Orders**

**3rd Wednesday of every month**

**15th June**

**20th July**

**17th August**

**19th October**

**16th November**

## **Absences / Early Collections**

Please make sure that for any planned absences or early collections, **the school is notified via text, Class Dojo message or phone message.** If there is no answer on the main phone, please leave a voice message.

# From the Principal



**Christine  
Owen**

## Camps Excursions Excitement

No doubt by now our Dingoes' families have been informed of a Snow Camp, in Term 3. At this stage the dates are 14th, 15th & 16th September. Although there is only minimal information, families, don't need to be anxious as this is a fully subsidised camp! Even the snow gear is apparently being provided. The main things families will need to provide are arm clothes, snow quality gloves and beanies. As I say, I don't have all the information currently, but will inform you all as I learn more.

Further, the 4 schools camp in November is also on the agenda, but this one has costs with it. Students from grade 5-6 will travel to Ballarat to Sovereign Hill and take part in the Costume School activities. Once again, I don't have all the costs for this camp, but hope to have that very soon so that families who wish to pay by instalments can begin a payment plan.

So that our younger students don't feel left out, there will be a number of excursions and incursions in which they can take part. Again, as soon as details are available, I will send them out. We have a whole school excursion to the Melbourne Museum to experience, 'Triceratops Days'. This is in only a couple of weeks on 15<sup>th</sup> June. And, once again, a fully subsidised excursion! No costs to families!

## Incursions and Events

On Tuesday 14<sup>th</sup> June, we will have Basketball Victoria running sessions for both classes here at school. I'm sure our students will enjoy having some special attention given to them by an expert and learn some tips about basketball.

We are very fortunate to have been able to organise with the Discovery Centre Bendigo, an entire day of Science fun! This terrific day is on Wednesday 22<sup>nd</sup> June. I have to confirm with the Discovery Centre, but it may well be open for families to also attend the various sessions. Watch this space!



**Students created beautiful indigenous-styled artwork with Mrs Mac.**

# EDUCATION WEEK

**FRIDAY**  
**Science with**  
**Mrs Foley**  
*Making*  
*sherbet*





# Stanhope Primary School ENROLMENTS

Enrolments are welcome  
for our school.

Parents or carers can  
contact the school to speak  
with the principal,  
Christine, or to collect an  
enrolment pack.

- ◆ Small caring environment.
- ◆ Individual learning plans to ensure high student outcomes.
- ◆ Engaging curriculum delivery.
- ◆ Parent involvement encouraged.

School tours by  
appointment.

## Stanhope Primary School

Photo Day 2022

Thursday 16<sup>th</sup> June

To Order Photos:

Go to [www.msp.com.au](http://www.msp.com.au) and click "Order Photos". Enter your child's personalised shootkey and follow the prompts.

**Order your School Photos before midnight Thursday 23<sup>rd</sup> June**

Late Orders can be accepted after 24<sup>th</sup> June by contacting 03 5482 3190.  
All late orders incur an extra \$20 for postage and handling.

**Family Photos** – Please order online prior to photo day with the unique shootkey on the Family form. These are available from the school office.  
One shootkey per family.



**msp**  
photography

03 5482 3190  
admin.mrr@msp.com.au  
[www.msp.com.au](http://www.msp.com.au)

# ENCHANTED FOREST OF PROTECTION



## COVID-19 vaccinations for children are available

Your local community has upcoming COVID-19 vaccination clinics at:

### Echuca College

**Where:** 20-50 Butcher St, Echuca (in the gymnasium)

**When:** 3.30pm – 7pm on **Monday 6 June 2022**

*This clinic is accessible to people with a disability.*

### Kyabram P-12 College

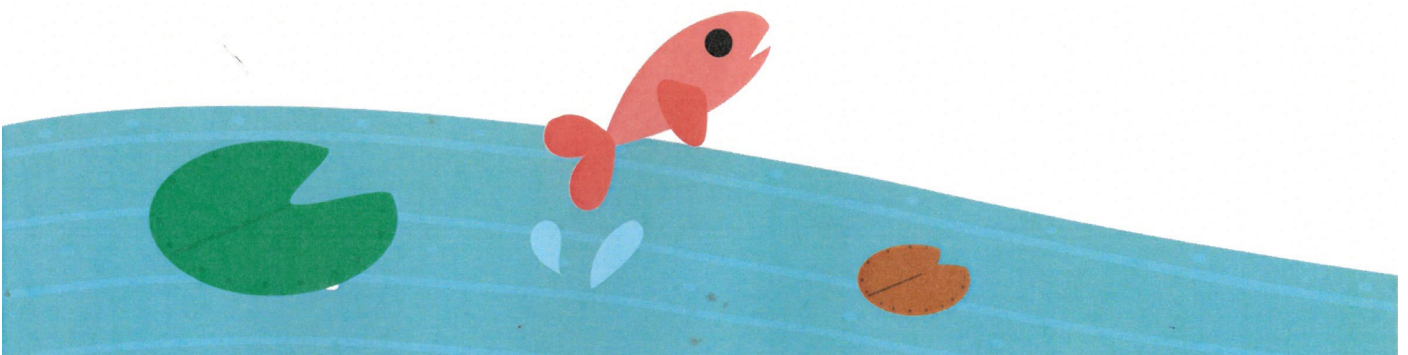
**Where:** 57 Fischer St, Kyabram (in the F-6 Digi-Tech room, enter via Haslem St)

**When:** 3.30pm – 7pm on **Tuesday 7 June 2022**

*This clinic is accessible to people with a disability.*

Vaccinations are also available for adults at all clinics.

Just walk in, no booking required.



# proPAVE landscapes

Phil De'Ath  
0418 527 365

Lina Ding  
0412 266 635

PO Box 4017 McKinnon 3204 | enquiries@propavelandscapes.com.au  
www.propavelandscapes.com.au

## Move to a local bank.

Sure, when you move your banking to Rushworth & District **Community Bank**® Branch you'll have access to great banking products and enjoy premium customer service rivaling any bank in the country.

But there's a deeper satisfaction in knowing your banking is making great things happen in your community.

Drop into your nearest branch at **23 High Street, Rushworth** or phone **5856 2122** to discover the impact your banking can have.



**Bendigo Bank**  
Bigger than a bank.

Rushworth & District **Community Bank**® Branch

Bendigo and Adelaide Bank Limited, ABN 11 068 049 178 AFSL/Australian Credit Licence 237879. A232496-05 (458039\_v1) (15/03/2019)

[bendigobank.com.au](http://bendigobank.com.au)

# PROTECT



Protecting children & young people from abuse is our responsibility

## DISCLAIMER

The Department of Education & Training, and Stanhope Primary School do not endorse the products or services of any private advertiser.

No responsibility is accepted by the Department or the School for the accuracy of information contained in advertisements.



## BOVINE INSEMINATIONS

HERD IMPROVEMENT SERVICE

1738 Finlay Road, TONGALA. 3621.

☎ (03) 58590763 Fax: (03) 58590219

[www.bovine.com.au](http://www.bovine.com.au) [parky2@inet.net.au](mailto:parky2@inet.net.au)

Thank you to Bovine Inseminations, whose generous sponsorship will cover the replenishment of our sports equipment.

## HELP IS BUT A PHONE CALL AWAY

**LIFELINE**  
**13 11 14**

**KID'S HELPLINE**  
**1800 55 1800**

**BEYOND BLUE**  
**1300 22 4636**

# AWARDS



**SUCCESS:**  
Bree and Tyler.

## CONGRATULATIONS!

<https://www.facebook.com/stanhopeps/>

