



Stanhope Primary School

Learning • Success • Respect • Citizenship



Principal: Christine Owen

Phone: 03 5857 2514

Mobile: 0419 548 318

Email: Stanhope@education.vic.gov.au

Newsletter

48 Midland Highway

PO Box 19

Stanhope, Victoria 3623

<http://stanhopeps.vic.edu.au>

Inspiring Lifelong Learning

ISSUE 16: May 26th, 2022

REMINDERS & THINGS TO DO

DATES TO REMEMBER

Education Week

23rd-27th May

MONDAY: Sport

TUESDAY: Numeracy

WEDNESDAY: Outdoor Storytime

THURSDAY: Digital Technologies

FRIDAY: Science

See inside for highlights

Friday 10th June

- ◆ Purple Dress Up Day & gold coin donation to support local charity 'The Gift'.

Wednesday 15th June

- ◆ Incursion: Waterworks

Thursday 16th June

- ◆ School Photos

Friday 24th June

- ◆ End of Term, 2.15pm dismissal

With our school crossing upgrade, our focus is on student safety. Please travel slowly in the car park and approaching the school.

SAFETY IN
SCHOOL ZONES
AND
CAR PARKS



From the Principal



I'm Back!

Thank you to Mrs Foley and Mrs DePasquale for holding the reins while I was on leave. Mrs Foley will be continuing in the Prep to Three (Wombats) room every Thursday and Friday until the end of this term. This will provide some further stability to the routines and learning for our early years students. We continue to work hard to resolve the current staffing issues.

Policeman Frank's Visit

Yesterday we were visited by our local Policeman Frank. Students were able to see the features of police vehicles and how they are used. Students learned about the sorts of things police work involves and the protection of community they provide. Photos of the visit are later in the newsletter.

School Council

Last night we held our regular school council meeting and approved some further excursions and camps. We do not have all the specific details at this stage, but the Sovereign Hill Costumed School Experience, for grades 5 & 6, will take place on the 3rd and 4th of November 2022. Costs for this camp will be available shortly. There is also a possibility of a subsidised camp to Feather Top Chalet for the last three days of term 3, September 14th, 15th, 16th with Lancaster Primary School.

Also discussed, was the noticeable lack of interest from families in becoming school councillors over the last couple of years. This presents a very significant issue that will need to be resolved to ensure the requirement of a functioning school council into next year. School Council membership offers families the opportunity to be part of the school's governance, moving forward and insight into the rationale behind various decisions, procedures and policies.

Building Works

We are expecting our P-3 room to be restumped in the coming few weeks. This will mean new carpet and new paint, making the learning area much more pleasant for students and staff.

PURPLE DRESS UP DAY

We will once again be dressing in Purple to support a local charity - The Gift. This organisation supports individuals and families facing the challenges associated with a cancer diagnosis. Students are asked to come dressed in purple clothes and bring in a small donation.



**Christine
Owen**

FROM THE Business Manager



Mica will still be in the office on Tuesdays and Thursdays.

I am happy to discuss confidential payment options for fees or camps & excursions with you.

Café Lunch Orders

**3rd Wednesday
of every month**

15th June

20th July

17th August

19th October

16th November

Absences / Early Collections

Please make sure that for any planned absences or early collections, **the school is notified via text, Class Dojo message or phone message.** If there is no answer on the main phone, please leave a voice message.



Stanhope Primary School ENROLMENTS

Enrolments are welcome
for our school.

Parents or carers can
contact the school to speak
with the principal,
Christine, or to collect an
enrolment pack.

- ◆ Small caring environment.
- ◆ Individual learning plans to ensure high student outcomes.
- ◆ Engaging curriculum delivery.
- ◆ Parent involvement encouraged.

School tours by
appointment.

Stanhope Primary School

Photo Day 2022

Thursday 16th June

To Order Photos:

Go to www.msp.com.au and click "Order Photos". Enter your child's personalised shootkey and follow the prompts.

Order your School Photos before midnight Thursday 23rd June

Late Orders can be accepted after 24th June by contacting **03 5482 3190**. All late orders incur an extra \$20 for postage and handling.

Family Photos – Please order online prior to photo day with the unique shootkey on the Family form. These are available from the school office. One shootkey per family.



msp
photography

03 5482 3190
admin.mrr@msp.com.au
www.msp.com.au

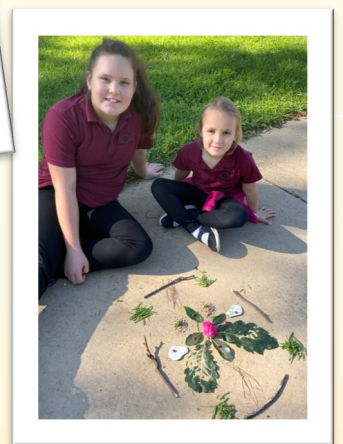
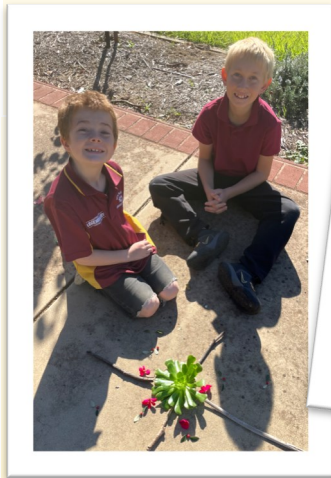
EDUCATION WEEK

23rd–27th May

MONDAY
Sports



TUESDAY
Numeracy



WEDNESDAY
Outdoor
Storytime



SPECIAL ACTIVITIES



WEDNESDAY
Visit from
Policeman
Frank



THURSDAY
Digital
Technologies



FRIDAY
Science
Photos next week

EVERY week
is Education Week
at Stanhope Primary

Wanted for Lantern Making

Used 2L and larger plastic drink bottles.

Please leave with reception at Rushworth Community House
and we'll recycle into beautiful lanterns!

Advance Notice!

Lantern Walk and Campfire Singalong

Friday 17th June

5.30pm

Art Depot - Horne St, Rushworth.

This is a family friendly event

to celebrate Winter Solstice - the shortest day of the year

BYO lantern or come to one of our after-school lantern-making
workshops at the Art Depot 3.30 - 5.00 Wednesday 1st and 8th

June

Any queries, 0400 152 774



PARENT / CAREGIVER / GUARDIAN INFORMATION AND CONSENT LETTER
2022 Student Attitudes to School Survey

Dear Parent / Caregiver / Guardian,

This letter is to inform you about the 2022 Student Attitudes to School Survey (AtoSS), that your child is invited to participate in.

About the survey

We value student voice as a means to improving student engagement, wellbeing and quality instruction and are conducting a survey to find out what your child thinks of your school.

The AtoSS is an annual student survey offered by the Department of Education and Training to assist your child's school to gain an understanding of students' perceptions and experience of school. Students will be asked about their thoughts and feelings in relation to their school, their learning, peer and family relationships, resilience, bullying, mental health and wellbeing, physical activity, and life in general.

This year, the AtoSS will be conducted at your school over the period Friday 27th May to Friday 10th June

What are the benefits?

In our experience, young people enjoy having their say. We have been running this survey for nearly 20 years and it has been invaluable in helping schools understand student views. Your school will use the survey results to plan programs and activities to improve your child's schooling experience.

What are the risks?

While we do not anticipate many risks of participation, some students may find some of the survey questions too personal and sensitive in nature. Should you agree for your child to participate, they are still free to skip questions or to withdraw at any stage if the survey makes them upset or uncomfortable.

The survey has been approved by a Human Research Ethics Committee. The questions are selected from validated survey instruments used in Australia and around the world, are strength-based, and tailored for each year level group.

What will my child be asked to do?

Your child will be invited to complete the survey **online during class time** using a purpose built secure online survey tool. It is important to note that we are not in any way "testing" your child. Please note:

- Student participation in the survey is voluntary and students may withdraw at any time.
- The survey will take around 20-45 minutes to complete.

How is my child's confidentiality protected?

Your child will be provided with a unique login to complete the survey from their teacher. The student login is an assigned identifier that may be used to link data for statistical and research purposes only. Personally identifiable data will not be recorded in the survey response file. This ensures that the confidentiality of your child's responses is protected at all times.

How will results be reported?

The survey results will be reported back to the school in an aggregate form throughout the survey period. All survey data that is made available in reports are for groups of students only so that no

individual student can be identified. Data suppression rules are used for schools with low student numbers per year level.

Your school may share the results of the survey with parents, in documents such as the School Annual Report.

Options for participation

Participation in this survey is **voluntary**. If you **do not** wish for your child to do the survey, please opt out via email to your school: stanhope.ps@education.vic.gov.au Please do so before Friday 27th May if possible or at the latest by Monday 30th May, stating that you wish to opt out of your child's participation, along with their name and year level.

If your school does not receive a Refusal of Consent email from yourself before the survey commencement date mentioned within this letter, it means that you give your consent for your child to participate in the 2022 Attitudes to School Survey.

A copy of the survey that we are asking your child to complete is available from your child's school. Please contact the administration office if you would like to see the survey before making your decision about whether you would like your child to participate.

If you would like more information, please speak to your child's teacher, or contact the Department at school.surveys@education.vic.gov.au.

Yours sincerely,

The Victorian Department of Education and Training

ENCHANTED FOREST OF PROTECTION



COVID-19 vaccinations for children are available

Your local community has upcoming COVID-19 vaccination clinics at:

Echuca College

Where: 20-50 Butcher St, Echuca (in the gymnasium)

When: 3.30pm – 7pm on **Monday 6 June 2022**

This clinic is accessible to people with a disability.

Kyabram P-12 College

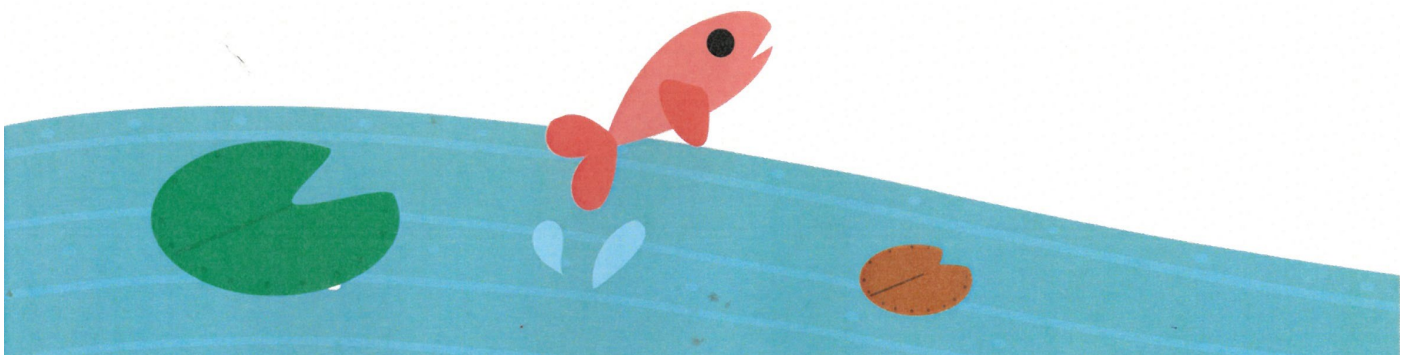
Where: 57 Fischer St, Kyabram (in the F-6 Digi-Tech room, enter via Haslem St)

When: 3.30pm – 7pm on **Tuesday 7 June 2022**

This clinic is accessible to people with a disability.

Vaccinations are also available for adults at all clinics.

Just walk in, no booking required.



proPAVE landscapes

Phil De'Ath
0418 527 365

Lina Ding
0412 266 635

PO Box 4017 McKinnon 3204 | enquiries@propavelandscapes.com.au
www.propavelandscapes.com.au

Move to a local bank.

Sure, when you move your banking to Rushworth & District **Community Bank**® Branch you'll have access to great banking products and enjoy premium customer service rivaling any bank in the country.

But there's a deeper satisfaction in knowing your banking is making great things happen in your community.

Drop into your nearest branch at **23 High Street, Rushworth** or phone **5856 2122** to discover the impact your banking can have.



Bendigo Bank
Bigger than a bank.

Rushworth & District **Community Bank**® Branch

Bendigo and Adelaide Bank Limited, ABN 11 068 049 178 AFSL/Australian Credit Licence 237879. A232496-05 (458039_v1) (15/03/2019)

bendigobank.com.au

PROTECT



Protecting children & young people from abuse is our responsibility

DISCLAIMER

The Department of Education & Training, and Stanhope Primary School do not endorse the products or services of any private advertiser.

No responsibility is accepted by the Department or the School for the accuracy of information contained in advertisements.



BOVINE INSEMINATIONS

HERD IMPROVEMENT SERVICE

1738 Finlay Road, TONGALA. 3621.

☎ (03) 58590763 Fax: (03) 58590219

www.bovine.com.au parky2@iinet.net.au

Thank you to Bovine Inseminations, whose generous sponsorship will cover the replenishment of our sports equipment.

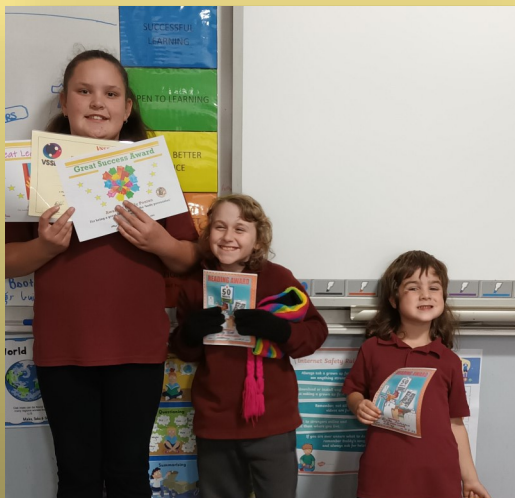
HELP IS BUT A PHONE CALL AWAY

LIFELINE
13 11 14

KID'S HELPLINE
1800 55 1800

BEYOND BLUE
1300 22 4636

AWARDS



LEARNING:

Lily P.

SUCCESS:

Blake, Lilly T, and Lily P.

CONGRATULATIONS!

<https://www.facebook.com/stanhopeps/>

