



Stanhope Primary School

Learning • Success • Respect • Citizenship



Principal: Christine Owen

Phone: 03 5857 2514

Mobile: 0419 548 318

Email: Stanhope@education.vic.gov.au

Newsletter

48 Midland Highway

PO Box 19

Stanhope, Victoria 3623

<http://stanhopeps.vic.edu.au>

Inspiring Lifelong Learning

ISSUE 9: March 31st, 2022

REMINDERS & THINGS TO DO

SCIENCE PRESENTATIONS

Some families are invited to see a presentation of our science projects.

Our students have been working hard with science over the term. Some of our students are keen to present to you a powerpoint, poster or model of their learning! **More on page 3**

THURSDAY 7th APRIL
at 2.50pm in the 'Wombat Room'

Please note that the Department recommends

twice weekly

COVID-19

testing by

students using

the RATs, preferably on the same days of the

week, or if symptoms are evident. These

continue to be supplied by the Department

of Education **FREE of CHARGE.**



DATES TO REMEMBER

Thursday 7th April

- ◆ Science Project Presentation to families 2.50pm

Friday 8th April

- ◆ ART
- ◆ End of Term 1
2.15pm early dismissal

TERM 2

Monday 25th April

- ◆ ANZAC DAY Public Holiday

Monday 27th April

- ◆ School Council Meeting 7pm

Monday 2nd May

- ◆ PUPIL-FREE DAY ***No School***

Thursday 5th May

- ◆ Grade 5-6 Science Excursion to Melbourne

Wednesday 18th May

- ◆ Café Lunch Order Day
- ◆ School Council Meeting 7pm

From the Principal

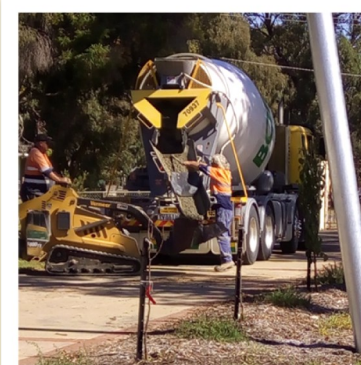


DAYLIGHT SAVINGS ENDS THIS WEEKEND!

'Spring Ahead, Fall Back!' Put your clocks back one hour before you go to bed on Saturday night.

Outdoor Learning Area

Works began yesterday on the installation of the shade sail structure to provide an outdoor learning area. Depending on the availability and supply of materials, we should be able to see it all completed not long after the holidays!



School Crossing Upgrade

Our School Crossing Upgrade is set to begin in the next few days and is hoped to be completed during the school holidays. If works are not completed, alternative arrangements will be put in place to ensure safe crossing for students.

Look for more information later in this newsletter.

Next Term

Keep your eye on next week's newsletter and on Class Dojo for some events coming up early next term. There is a grade 5-6 Science excursion to Melbourne, some science incursions and a student free day in week 2. Smile Squad will be visiting at some stage, which is the free dental program offered by the Victorian government to all primary and secondary school students. More information is included later in this newsletter. Oh, and don't forget Naplan...



**Christine
Owen**

FROM THE

**Business
Manager**



Mica will still be in the office on Tuesdays and Thursdays.

I am happy to discuss confidential payment options for fees or camps & excursions with you.

Café Lunch Orders

**3rd Wednesday
of every month**

18th May

15th June

20th July

17th August

19th October

16th November

Absences / Early Collections

Please make sure that for any planned absences or early collections, the school is notified via text, Class Dojo message or phone message. If there is no answer on the main phone, please leave a voice message.

SCIENCE PRESENTATIONS

Families of the following students are invited to come in & view their projects:
Sienna, Lily P, Marcus, Declan, Seth, Joel, Tyler, Cooper and Amelia

What we're doing in the Classrooms

Mrs Sheedy & Ms Owen

Dingoes Den 3D Maths

We built a mediaeval town with buildings, a cart and a well. The instructions were really tricky, but with persistence, we got there in the end!



Stanhope Pool
AGM
Thurs 31st March
7pm
Stanhope Business
Centre
All Welcome
Help Save our Pool



- ◆ Small caring environment.
- ◆ Individual learning plans to ensure high student outcomes.
- ◆ Engaging curriculum delivery.
- ◆ Parent involvement encouraged.

ENROLMENTS **2022**

Enrolments for 2022 are now open for our school.

Parents or carers can contact the school to speak with the principal, Christine, or to collect an enrolment pack.
School tours by appointment.

proPAVE landscapes

Phil De'Ath
0418 527 365

Lina Ding
0412 266 635

PO Box 4017 McKinnon 3204 | enquiries@propavelandscapes.com.au
www.propavelandscapes.com.au

Move to a local bank.

Sure, when you move your banking to Rushworth & District **Community Bank**® Branch you'll have access to great banking products and enjoy premium customer service rivaling any bank in the country.

But there's a deeper satisfaction in knowing your banking is making great things happen in your community.

Drop into your nearest branch at 23 High Street, Rushworth or phone 5856 2122 to discover the impact your banking can have.



Bendigo Bank
Bigger than a bank.

Rushworth & District **Community Bank**® Branch

Bendigo and Adelaide Bank Limited, ABN 11 068 049 178 AFSL/Australian Credit Licence 237879. A232496-05 (458039_v1) (15/03/2019)

bendigobank.com.au

PROTECT



Protecting children & young people from abuse is our responsibility

DISCLAIMER

The Department of Education & Training, and Stanhope Primary School do not endorse the products or services of any private advertiser.

No responsibility is accepted by the Department or the School for the accuracy of information contained in advertisements.



BOVINE INSEMINATIONS

HERD IMPROVEMENT SERVICE

1738 Finlay Road, TONGALA. 3621.

☎ (03) 58590763 Fax: (03) 58590219

www.bovine.com.au parky2@inet.net.au

Thank you to Bovine Inseminations, whose generous sponsorship will cover the replenishment of our sports equipment.

HELP IS BUT A PHONE CALL AWAY

LIFELINE
13 11 14

KID'S HELPLINE
1800 55 1800

BEYOND BLUE
1300 22 4636

AWARDS



SUCCESS:

Amelia, Blake, Cooper, Joel, Lily P, Marcus.

LEARNING:

Seth.

<https://www.facebook.com/stanhopeps/>



CONGRATULATIONS!

LUNCH ORDERS 2021 - REVISED

ITEM	PRICE
Salad Tubs – Small Ham, cheese, tomato, lettuce, beetroot, carrot, avocado, cucumber	\$4.00
Salad Tubs – Large	\$5.00
Sandwiches & Wraps Fillings: Ham, salami or chicken Lettuce, cheese, vegemite, tomato, beetroot, onion, cucumber, avocado, pineapple.	
Fruit Tubs – Small (TERM 1 & 4 ONLY) Strawberry, watermelon, grapes, apple, banana, mixed berries, canteloupe	\$4.00
Fruit Tubs – Large (TERM 1 & 4 ONLY)	\$5.00

Pies	<i>Please add extra 30c for Tomato Sauce sachet</i>	\$4.00
Flavoured Pies		\$4.50
Sausage Rolls		\$3.50
Mini Dim Sims (each)		.70c
Mini Spring Rolls		\$1.00
Fish Bites		\$1.50
Pineapple Pizza		\$3.00
Half Bag of Chips		\$2.00
Full Bag of Chips		\$3.00
Chicken Nuggets (each)		.80c

PLEASE NOTE THAT IN LINE WITH OUR 'WATER ONLY' POLICY, DRINKS WILL NOT BE AVAILABLE FOR PURCHASE AS PART OF CAFÉ LUNCH ORDERS.

Please only order what is on the list, check prices are correct and that the correct money is in the bag – no change given.

What is Smile Squad?

Important information to support the program at your school



What is Smile Squad?

Smile Squad is the Victorian Government's school dental program. Smile Squad will offer free dental care to all Victorian primary and secondary government school students.

This initiative is led by the Department of Health (DH) and Dental Health Services Victoria (DHSV), with input from the Department of Education and Training (DET). Smile Squad services are provided by community dental agencies.

Regular dental checks can prevent or address dental health issues before they become serious. Many students do not see a dentist regularly and have poor dental health.

What does Smile Squad include?

All services below will be available free of charge to all Victorian government school students.

Annual oral health examination

Each school will be visited by Smile Squad who will provide a free oral health check-up to each student.

- **Services provided:** examination, x-rays when required, oral health and dietary advice, coaching and preventive interventions, including application of fluoride varnish.

Follow-up treatment

Free follow-up treatment will be provided to all students who need it.

- **Services provided:** scale and clean, fissure sealants, root canals, restorations (fillings), extractions, and all other treatment required.

Does not include orthodontics or cosmetic procedures.

Oral health promotion

Each student will receive a free dental pack.

- **Includes:** a toothbrush, toothpaste, and oral health education material.
- Oral health promotion will link with existing school-based programs where possible.

Oral health examination

- Oral health examinations will usually be delivered in a room on the school site using mobile dental equipment (i.e. portable chair, portable examination tools).
- The team will comprise two oral health or dental therapists and two dental assistants.
- The oral health examination appointment will be approximately 15 minutes long.

Providing this service in a room in the school will mean more students can be seen at one time, cutting down the total length of time the service may be required on the school site.

Follow-up treatment

- Will take place in a van on the school site.
- The treatment van will have a fully-functioning single-chair dental clinic set up.
- The treatment van will be staffed by oral health therapists, dental therapists, dental assistants and/or dentists.
- More complex treatments (including root canal treatment, complex restorations and complex or surgical extractions) may need to occur at the local community dental agency.



March 2022

Stanhope Primary School crossing upgrade

We're improving safety for pedestrians including Stanhope Primary School students by upgrading the pedestrian crossing on the Midland Highway.

These upgrades are part of the Australian Government's \$3 billion Road Safety Program, being delivered in partnership with the Victorian Government.

What we're doing

The improvements we're making include:

- Upgrading the crossing to ensure it is fully accessible for people using wheelchairs and other mobility devices.
- Relocating the crossing slightly, away from existing driveways and Woollard Lane to allow for safer vehicle access.
- Installing new kerbing on each side of the road to clearly define the crossing, making it safer for pedestrians and more visible for drivers.
- Sealing the entry to the Stanhope Primary School parking area, located to the west of the school crossing.
- Improving signage and line-marking on the road to alert motorists they are approaching a pedestrian crossing and must slow down.

When to expect us

We're starting works in April 2022 and construction is expected to take up to five weeks to complete, weather permitting.

Impacts during construction

An alternative safe crossing will be provided for school students while works are underway.

In order to construct the upgrade, access to Woollard Lane from the Midland Highway will be closed during works. Access to Woollard Lane will still be available from Elford Lane and Birdwood Avenue.

Traffic management will be in place during construction with speeds reduced to 40km/h.

The road will be reduced to one lane with delays of up to 1-2 minutes expected.

Please remember to drive to the conditions to protect our workers, other drivers, cyclists and pedestrians.

Why we're doing it?

Upgrading this pedestrian crossing will:

- improve safety for vulnerable road users, such as school students and other pedestrians, wheelchair users and those using mobility devices.
- Assist residents to access key recreation facilities.

Find out more

Visit: regionalroads.vic.gov.au and search for 'Stanhope Primary School Pedestrian Crossing, Midland Highway'

Call: 133 778

Email: NRengagement@roads.vic.gov.au



Australian Government

BUILDING OUR FUTURE



Using pedestrian crossings and children's crossings

Pedestrians need to be alert. Always look and listen for approaching traffic from each direction before crossing at a pedestrian crossing or children's crossing. Pedestrians need to be sure that drivers or riders have seen them and are stopping.

Pedestrian crossings

Decide whether it is safe before beginning to cross.

Only cross when it is safe to do so and the traffic is stopping.

Make sure drivers in other lanes are also stopping before continuing to cross.

Stay alert – keep looking and listening for traffic while crossing.

Drivers and riders at pedestrian crossings:

- Must give way to all pedestrians on a crossing.
- Must not overtake another vehicle already stopped at a crossing.
- Must approach at a speed slow enough to stop safely, if necessary.



Don't expect others to give way, even if they should.

Children's crossings

When flags are displayed all pedestrians should use the crossing.

Some children's crossings have a crossing supervisor. Always follow the instructions of the crossing supervisor.

If there isn't a supervisor, look and listen for traffic before crossing.

Make sure all traffic has stopped before stepping on to the crossing.

Only cross when it is safe to do so.

Stay alert – keep looking and listening for traffic while crossing.

Drivers and riders at children's crossings:

- Must not overtake a vehicle stopping or stopped at the crossing.
- Must stop if a child or adult is about to cross or is crossing, even if there is no crossing supervisor.
- Must stop if a hand held "Stop" sign is displayed.
- Must proceed only when all children and adults, including the supervisor, are clear of the crossing.
- Must approach at a speed slow enough to stop safely, if necessary.
- Should always watch out for children near schools.



This Fact Sheet was published in September 2011

Make sure all traffic is stopping before you step onto the crossing.