



Stanhope Primary School

Learning • Success • Respect • Citizenship



Principal: Christine Owen

Phone: 03 5857 2514

Mobile: 0419 548 318

Email: Stanhope@education.vic.gov.au

Newsletter

48 Midland Highway

PO Box 19

Stanhope, Victoria 3623

<http://stanhopeps.vic.edu.au>

Inspiring Lifelong Learning

ISSUE 30: October 7th 2021

REMINDERS & THINGS TO DO

DATES TO REMEMBER

COVID-19 UPDATE

COVID-19 RESTRICTIONS FOR REGIONAL VICTORIA

STANHOPE PRIMARY SCHOOL INFORMATION

- Adults must limit coming into the school building *unless* on essential business.
- All visitors and adults **MUST** enter via the main front door.
- All visitors and adults **MUST** use the QR code on arrival or report to reception.
- All visitors and adults **MUST** sign the visitor's book for contact tracing.
- All adults and students **MUST** use hand sanitiser on entry.
- All visitors and adults **MUST** wear a face mask.

Christine Owen



**WELCOME
BACK
To Term 4**

Friday 8th October

- ◆ **SORRY NO ASSEMBLY**

Monday 11th October

- ◆ **LIBRARY**

Thursday 14th October

- ◆ **P-2 Fun Night**

Wednesday 20th October

- ◆ **Café Lunch Orders**
Correct money in a paper bag
Menu attached

FATHER'S DAY STALL

We apologise that we have had to cancel the Father's Day stall until COVID-19 restrictions are lifted and on-site learning resumes.

From the Principal

Hats On!

Students should now be wearing school hats. Caps are not suitable. We have hats available from the office for \$5.00 No Hat No play!

Thank You!

A big thank you to Mr Mangan who has held the fort for me whilst I was on leave. An unusual four weeks for Mr Mangan, due to Covid restrictions, but he was able to get to know quite a few of you even though he didn't get to meet everyone due to the lockdown situation. He and a few of the students onsite were able to clean up some rubbish and junk and get some areas of the garden beds, weeded. I know he enjoyed his time with you all.

Maintenance & Improvements

Last term we organised for the glass in all the doors of the school to be replaced with safety and laminated glass. This has been completed over the holidays with all glass panes safe from accidental breakage, providing a much safer space for our students and staff to work in. There was a bit of a clean up of unwanted junk around the school grounds and buildings and we will have another one this term as there is still a lot of junk that needs cleaning up! We are also expecting some action on the condition of the roof and general drainage around the school, sometime this year.

Restrictions

Unfortunately, due to the current restrictions, we are unable to hold school assemblies, incursions or excursions, so quite a few events we had planned, have now had to be cancelled or deferred. We will resume all these special events just as soon as we can! As soon as information becomes available to us regarding operations in schools, we will pass it on to everyone. We are all hoping for a more normal 2022. Even though there are still some students at home, please contact the school if you are having any issues with the remote learning or concerns with your children. We are here to support you! This is a really tough time for families and students and we will do what we can to help.

Talk to us!

We've had some students leave us over last term, for a bigger school. Some families did talk to us about their reasons for leaving, but often, we had no idea what caused families to leave. Please talk to your teacher or me if you have any issues or concerns. All schools need to work with families as a partnership to make sure their children succeed in their education.



**Christine
Owen**



FROM THE

Business Manager



Mica will still be in the office on Tuesdays and Thursdays.

I am happy to discuss confidential payment options for fees or camps & excursions with you.

Café Lunch Orders

**3rd Wednesday
of every month**

**20th October
17th November
15th December**

Absences / Early Collections

Please make sure that for any planned absences or early collections, **the school is notified via text, Class Dojo message or phone message.** If there is no answer on the main phone, please leave a voice message.

We are a SUNSMART School



**YES
OUTDOOR
PLAY**



**NO
OUTDOOR
PLAY**

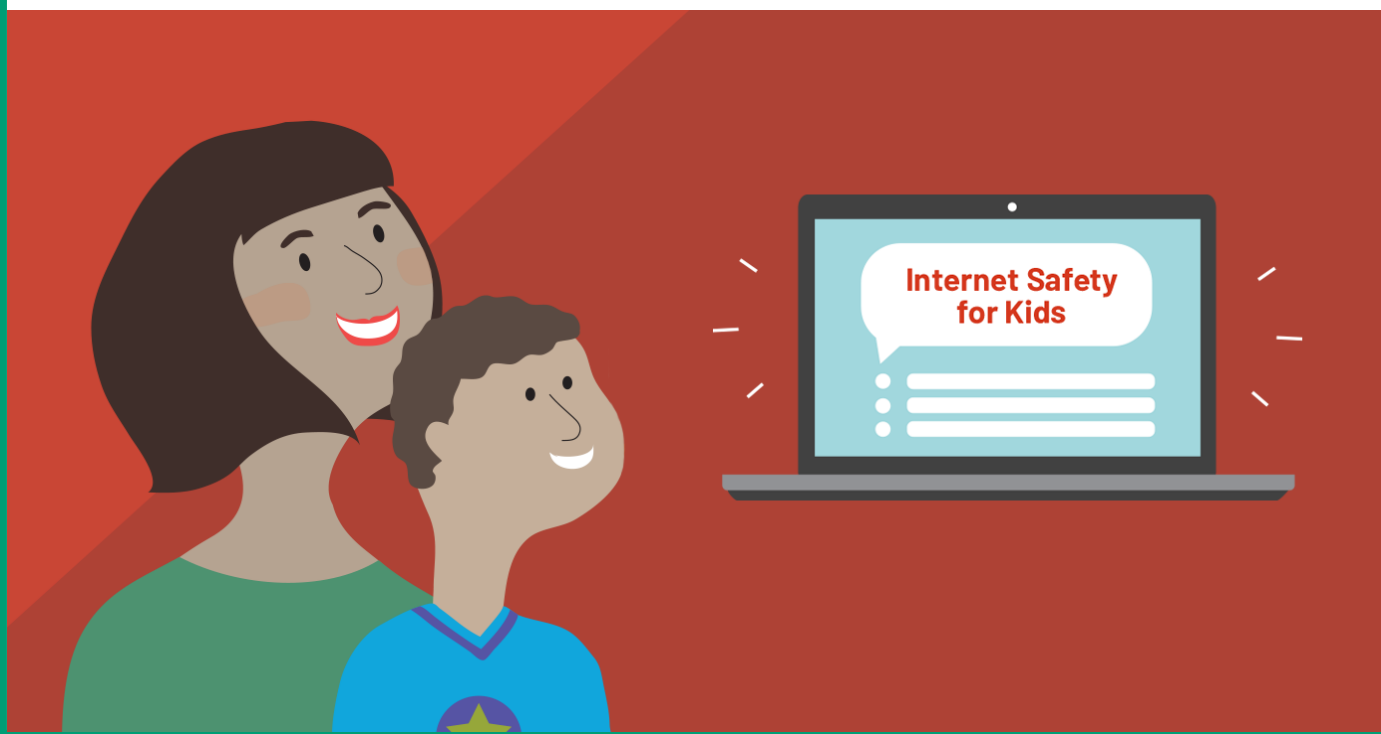


Coming Up!

Digital Learning & Safety for Parents

Shortly there will be a series of Zoom webinars for parents who want to know more about what their children learn and do online and who want to improve their own skills and knowledge to be better able to help their children with the many digital learning tasks students undertake.


Links will be sent out via Class Dojo for you to attend over the next few weeks.

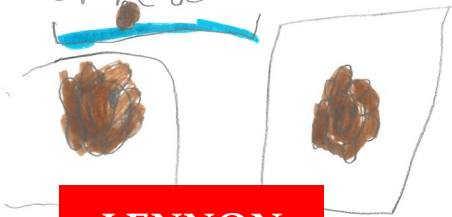


Grade P-2


Mrs Sheedy

This week we made magic flowers with Mrs Wilkinson

 Magic Flower
First we colored our flower. Next we cut it out. we folded the petals in. Then we put them in water and they bloomed.




LENNON

 Magic Flower
magical flower



KYRA

 Magic Flower
1 First we colored our flower
2 Next we cut it out
3 we folded the petals in
4 then we put them in
5 water and bloomed



COOPER

 Magic Flower



TRINITY

AFTER SCHOOL... FUN NIGHT

WHO: Prep / One / Two

WHEN: Thursday 14th October

TIME: stay after school

PICK UP: 7:00pm (SEE BELOW FOR INSTRUCTIONS)

COST: no cost



STUDENTS NEED TO BRING (for themselves)...

- Snack for afternoon tea (NOT microwavable)
- Food for dinner (NOT microwavable- something for the pie warmer or a sandwich)

FOOD FOR THE EVENT- please note due to the Coronavirus, there is not going to be any sharing of food.

This event is not compulsory and the permission note in UEducateUs needs to be filled in.

PICK UP INSTRUCTIONS...

The students have been working hard on their items for the school concert. As the event has had to be cancelled we would like to showcase these items to the families.

It will be at **7:00pm on the front lawn.**

Families will need to be outside the school ground, in the carpark. Please adhere to social distancing and all visitors need to be wearing a mask. After the showcase, students will go home.

PLEASE NOTE:

All students need a brightly coloured t-shirt for our showcase items.

Students need to bring these to school on the day and we will get changed after dinner at school. If t-shirts have a picture on it, students can wear the shirt inside out. Please let me know (through Class Dojo) what colour your child will be wearing- so we can make an accessory for that item.



COVID-19 VACCINATION CLINIC



Monday, Tuesday and Wednesday 9.00am - 4.30pm
Thursday's 1.30pm - 7.30pm

Kyabram Community & Learning Centre
21-25 Lake Road Kyabram

Please use the rear entrance of the KCLC building

Pfizer and Astra Zeneca vaccine available

Free transport available to and from the clinic for those eligible. Please call Kyabram Taxi Service on 5852 1497

Bookings Essential: Appointments made through
<https://portal.cvms.vic.gov.au> or

by calling 1800 675 398

Bring ID and Medicare Card



**KYABRAM DISTRICT
HEALTH SERVICE**



Due to COVID-19 restrictions, we apologise that school tours are not permitted at this time.

ENROLMENTS 2022

Enrolments for 2022 are now open for our school.

Parents or carers can contact the school to speak with the principal, or to collect an enrolment pack.



**Stanhope
Kindergarten**

2022 Kindergarten enrolments are now open. Applications can be completed online via Shire of Campaspe - <https://campaspe-web.ticloud.com/T1PRDefault/WebApps/eProperty/P1/eSubmit/GroupCategory.aspx?r=SOC.WEBGUEST&f=%24P1.ESB.GROUPCAT.VIW>

Or for a paper copy, please contact Shine Bright Stanhope Kindergarten on 5857 2297 (Wed - Fri)

proPAVE landscapes

Phil De'Ath
0418 527 365

Lina Ding
0412 266 635

PO Box 4017 McKinnon 3204 | enquiries@propavelandscapes.com.au
www.propavelandscapes.com.au

Move to a local bank.

Sure, when you move your banking to Rushworth & District **Community Bank**® Branch you'll have access to great banking products and enjoy premium customer service rivaling any bank in the country.

But there's a deeper satisfaction in knowing your banking is making great things happen in your community.

Drop into your nearest branch at 23 High Street, Rushworth or phone 5856 2122 to discover the impact your banking can have.



Bendigo Bank
Bigger than a bank.

Rushworth & District **Community Bank**® Branch

Bendigo and Adelaide Bank Limited, ABN 11 068 049 178 AFSL/Australian Credit Licence 237879. A232496-05 (458039_v1) (15/03/2019)

bendigobank.com.au

PROTECT



Protecting children & young people from abuse is our responsibility

DISCLAIMER

The Department of Education & Training, and Stanhope Primary School do not endorse the products or services of any private advertiser.

No responsibility is accepted by the Department or the School for the accuracy of information contained in advertisements.



BOVINE INSEMINATIONS

HERD IMPROVEMENT SERVICE

1738 Finlay Road, TONGALA. 3621.

☎ (03) 58590763 Fax: (03) 58590219

www.bovine.com.au parky2@iinet.net.au

Thank you to Bovine Inseminations, whose generous sponsorship will cover the replenishment of our sports equipment.

HELP IS BUT A PHONE CALL AWAY

LIFELINE
13 11 14

KID'S HELPLINE
1800 55 1800

BEYOND BLUE
1300 22 4636

AWARDS

NO ASSEMBLY HELD LAST WEEK

<https://www.facebook.com/stanhopeps/>



CONGRATULATIONS!

LUNCH ORDERS 2021 - REVISED

ITEM	PRICE
Salad Tubs – Small Ham, cheese, tomato, lettuce, beetroot, carrot, avocado, cucumber	\$4.00
Salad Tubs – Large	\$5.00
Sandwiches & Wraps Fillings: Ham, salami or chicken Lettuce, cheese, vegemite, tomato, beetroot, onion, cucumber, avocado, pineapple.	
Fruit Tubs – Small (TERM 1 & 4 ONLY) Strawberry, watermelon, grapes, apple, banana, mixed berries, canteloupe	\$4.00
Fruit Tubs – Large (TERM 1 & 4 ONLY)	\$5.00

Pies	<i>Please add extra 30c for Tomato Sauce sachet</i>	\$4.00
Flavoured Pies		\$4.50
Sausage Rolls		\$3.50
Mini Dim Sims (each)		.70c
Mini Spring Rolls		\$1.00
Fish Bites		\$1.50
Pineapple Pizza		\$3.00
Half Bag of Chips		\$2.00
Full Bag of Chips		\$3.00
Chicken Nuggets (each)		.80c

PLEASE NOTE THAT IN LINE WITH OUR 'WATER ONLY' POLICY, DRINKS WILL NOT BE AVAILABLE FOR PURCHASE AS PART OF CAFÉ LUNCH ORDERS.

Please only order what is on the list, check prices are correct and that the correct money is in the bag – no change given.

Stanhope Primary School

OUTSIDE SCHOOL HOURS CARE

Parent Interest Survey

(Please be aware this is an initial survey only to establish viability, not a guarantee of such a service)

Q 1. Are you interested in accessing Outside School Hours Care in 2022 at Stanhope Primary School

- € Yes
- € Maybe, if extra numbers were required to make the program viable, I would consider it.
- € No

Q 2. How many days per week would your child/children likely attend? (select all days that apply)

- € Monday
- € Tuesday
- € Wednesday
- € Thursday
- € Friday
- € Less frequent than weekly (please indicate a timeframe below)

Q 3. What sessions would you be likely to use? (select all sessions that apply)

- € Before School Care
- € After School care
- € Holiday Program

Other comments: