



# Stanhope Primary School

Learning • Success • Respect • Citizenship



Principal: Christine Owen

Phone: 03 5857 2514

Mobile: 0419 548 318

Email: [Stanhope@education.vic.gov.au](mailto:Stanhope@education.vic.gov.au)

## Newsletter

48 Midland Highway

PO Box 19

Stanhope, Victoria 3623

<http://stanhopeps.vic.edu.au>

### Inspiring Lifelong Learning

ISSUE 32: October 21st 2021

#### REMINDERS & THINGS TO DO

#### DATES TO REMEMBER

### COVID-19 UPDATE

#### Chief Health Officer's Regulations include:

- Stay home if unwell and get tested.
- Adults must limit coming into the school building *unless* on essential business.
- All visitors and adults **MUST** enter via the main front door.
- All visitors and adults **MUST** use the QR code on arrival or report to reception.
- All visitors and adults **MUST** sign the visitor's book for contact tracing.
- All adults and students **MUST** use hand sanitiser on entry.
- All visitors and adults **MUST** wear a face mask.

#### Monday 25th October

- ◆ LIBRARY

#### Tuesday 26th October

- ◆ ART

#### Monday 1st November

- ◆ PUPIL-FREE DAY

#### Tuesday 2nd November

- ◆ MELBOURNE CUP DAY

- ◆ Statewide transition day is yet to be confirmed, (usually held early December)

- ◆ We will keep families informed regarding the Grade 4-6 Anglesea camp.

*Welcome back to Mrs D who is undergoing treatment, but will still be here when she is feeling well enough.*



**New Rules for Grade 3-6 students wearing masks indoors**

*See DET letter in newsletter*

# From the Principal

## P-2 Fun Night!

Despite the disappointment of not being able to show families their performance, the P-2's all had a terrific, fun time. They made slime, played games had snacks and dinner together. But all was not lost! The performance went ahead on Monday to the delight of all onlookers! A very big thank you to Mrs Sheedy, ably assisted by Ms Whitney. Thanks also to all the family members who came to watch the performance from outside the fence. I noticed that everyone was very respectful of the social distancing and mask wearing protocols. Some photos can be seen later in the newsletter.

## Maths Packs

These maths packs are a great way to engage everyone in the family. Each week a different student takes the pack home and together as a family, you can share some of the games in the pack. You can send us photos of how you use the packs at your place and we can put them in the newsletter if you want to!

## Children's Week

Children's Week is a national celebration that recognises the talents, skills, achievements and rights of children. It will run from Saturday 23 October to Sunday 31 October 2021, with thousands of Victorian children taking part in the festivities. The theme for Children's Week 2020-21 is **Children have the right to choose their friends and safely connect with others**, drawn from Article 15 of the United Nations Convention on the Rights of the Child.

On 29<sup>th</sup> October, all students will receive a lunch courtesy of the Kyabram District Health Service. The students have previously selected from a Subway menu.

Part of the activities to celebrate Children's Week is a competition for illustrations done by the students to show the different pathways to friendship. These are sent off and the winner will receive a voucher to spend at businesses in Kyabram



**Christine  
Owen**



## **FROM THE Business Manager**



**Mica will still be in the office on Tuesdays and Thursdays.**

**I am happy to discuss confidential payment options for fees or camps & excursions with you.**

## **Café Lunch Orders**

**3rd Wednesday  
of every month**

**17th November  
15th December**

The Shire of Campaspe is looking for Casual School Crossing Supervisors in various locations, including Stanhope. These positions would be to cover situations where the regular supervisor is not able to cover their shift/s. Please contact the school or Nick Curnow at the Shire if you or someone you know is interested.



# Grade P-2

Mrs Sheedy

## P-2 Fun Night 2021

Our favourite moments...

**Bree**- staying here later in the night

**Ellie**- having ice-creams and tea here

**William**- spending more time here

**Trinity**- we made slime

**Lenny**- it was okay...we didn't get to do the concert

**Ayvee**- putting our hands in slime...the games in the assembly room

**Jarred**- watching "Gangsta Granny"

**Cass**- making slime

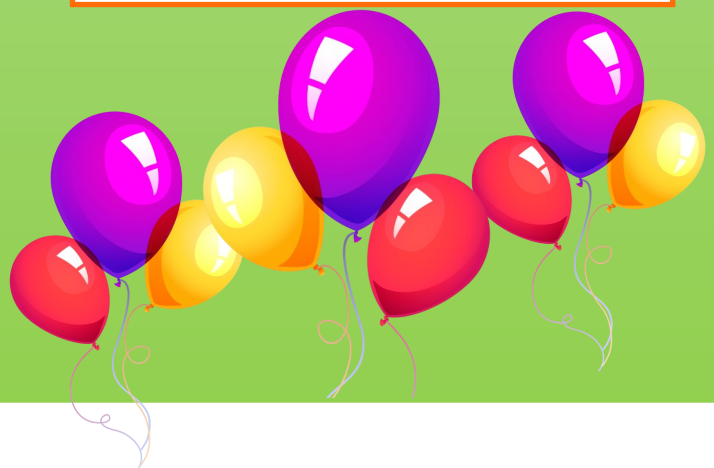
**Kialla**- making slime and having lots of fun

**Lilly**- making slime

**Amelia**- making slime and doing the music games

**Cooper**- watching "Gangsta Granny", making slime and playing games in the assembly room

**Breeana**- we got to play a lot and watch a movie





# P-2 FUN NIGHT





# P-2 FUN NIGHT



## New rules for students wearing masks at school 15 October 2021

Dear parents

To support the return to onsite schooling, the Victorian Chief Health Officer has announced new rules around mask wearing to keep everyone at school safe.

We know that returning to school will look a little different this time and it's important that we support you and your children with effective ways to keep everyone safe and well.

One of the most important and effective things we can do to help keep students in the classroom is to wear masks to help minimise COVID-19 transmission risk.

When worn properly, masks can play an important role in reducing the transmission risks of Covid-19 that could happen from common activities in school.

### Students in Grade 3 and above

- Face masks will be required for secondary students at all times both indoors and outdoors at school, unless a lawful exception applies.
- Face masks will also be required for all school students in Grade 3 and above indoors, unless a lawful exception applies. Face masks can be removed while outdoors at school for primary students.
- Students in Grades 3 to 6 are required to wear face masks from **18 October 2021**.
- Face masks will be strongly recommended for Prep to Year 2 students.
- For composite classes of Grade 2 and 3 students, Grade 2 students will be strongly encouraged to wear masks like their Grade 3 peers.
- For students with a disability, parents and carers should speak to the child's doctor or regular health professional about the best methods to encourage mask wearing. Students and parents can also contact the [Disability Liaison Officer program](#) for more information.
- Students with a medical condition or disability that make wearing a face covering unsuitable are not required to wear a mask.
- Face masks are required for students in Year 3 to Year 6 unless an exception applies. Exceptions include students with a physical or mental disability where their disability means it would not be suitable. Parent/carers of a student/s who meet the criteria for an exception must provide their approval in writing for their child/ren to not wear a mask to the school.

We have seen through remote learning that friendships are important. We can work together to remind students that wearing masks means they can see their friends and be at school together more often. We also protect our friends and keep them safe.

We encourage you to discuss wearing masks with your children to keep kids in the classroom and minimise COVID-19 transmission risk. The Raising Children Network has resources that can help you with [having conversations with your children about wearing masks](#).

Thank you for your ongoing support in the implementation of these important steps that enable us to return to onsite learning. We look forward to welcoming your children back into the classroom.

Principal

## We are a SUNSMART School



**YES  
OUTDOOR  
PLAY**



**NO  
OUTDOOR  
PLAY**



*Coming Up!*

## Digital Learning & Safety for Parents

Shortly there will be a series of Zoom webinars for parents who want to know more about what their children learn and do online and who want to improve their own skills and knowledge to be better able to help their children with the many digital learning tasks students undertake.

**Links will be sent out via Class Dojo for you to attend over the next few weeks.**



- ◆ Thursday 28 October at 7.30pm
- ◆ Tuesday 9 November at 7.30pm
- ◆ Tuesday 20 November at 7.30pm

# COVID-19 VACCINATION CLINIC



**Saturday 23rd October**  
**9am-4pm**  
**at**

**Stanhope Health**  
**35 Birdwood Avenue**

**Pfizer, Moderna and Astra Zeneca available**

**Bookings essential, please ring:**

**5857 0451**



KYABRAM DISTRICT  
HEALTH SERVICE





Due to COVID-19 restrictions, we apologise that school tours are not permitted at this time.

# ENROLMENTS 2022

Enrolments for 2022 are now open for our school.

Parents or carers can contact the school to speak with the principal, or to collect an enrolment pack.



**Stanhope  
Kindergarten**

2022 Kindergarten enrolments are now open. Applications can be completed online via Shire of Campaspe - <https://campaspe-web.ticloud.com/T1PRDefault/WebApps/eProperty/P1/eSubmit/GroupCategory.aspx?r=SOC.WEBGUEST&f=%24P1.ESB.GROUPCAT.VIW>

Or for a paper copy, please contact Shine Bright Stanhope Kindergarten on 5857 2297 (Wed - Fri)

# proPAVE landscapes

Phil De'Ath  
0418 527 365

Lina Ding  
0412 266 635

PO Box 4017 McKinnon 3204 | enquiries@propavelandscapes.com.au  
www.propavelandscapes.com.au

## Move to a local bank.

Sure, when you move your banking to Rushworth & District **Community Bank**® Branch you'll have access to great banking products and enjoy premium customer service rivaling any bank in the country.

But there's a deeper satisfaction in knowing your banking is making great things happen in your community.

Drop into your nearest branch at 23 High Street, Rushworth or phone 5856 2122 to discover the impact your banking can have.



**Bendigo Bank**  
Bigger than a bank.

Rushworth & District **Community Bank**® Branch

Bendigo and Adelaide Bank Limited, ABN 11 068 049 178 AFSL/Australian Credit Licence 237879. A232496-05 (458039\_v1) (15/03/2019)

[bendigobank.com.au](http://bendigobank.com.au)

# PROTECT



Protecting children & young people from abuse is our responsibility

## DISCLAIMER

The Department of Education & Training, and Stanhope Primary School do not endorse the products or services of any private advertiser.

No responsibility is accepted by the Department or the School for the accuracy of information contained in advertisements.



## BOVINE INSEMINATIONS

HERD IMPROVEMENT SERVICE

1738 Finlay Road, TONGALA. 3621.

☎ (03) 58590763 Fax: (03) 58590219

[www.bovine.com.au](http://www.bovine.com.au) parky2@iinet.net.au

Thank you to Bovine Inseminations, whose generous sponsorship will cover the replenishment of our sports equipment.

## HELP IS BUT A PHONE CALL AWAY

**LIFELINE**  
**13 11 14**

**KID'S HELPLINE**  
**1800 55 1800**

**BEYOND BLUE**  
**1300 22 4636**

# AWARDS

**NO ASSEMBLY HELD LAST WEEK**

<https://www.facebook.com/stanhopeps/>



**CONGRATULATIONS!**